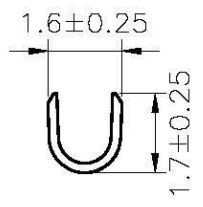
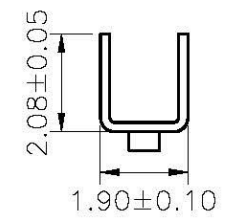


SEC:A-A



SEC:B-B



SEC:C-C

Ordering Information & Specifications

Part No	Wire Range	Insulation O.D.	Material	Finish	Qty/reel
BH-M-22	AWG#22-#28	2.40mm(max)	Phosphor Bronze	Tin-plated	5,000pcs

Note:E-Stamping before Tin-plated

BH-M-22-LF
LEADFREE
RoHS Compliant

Allconnectors
www.allconnectors.de
Tel.: 0049 711 7009503
70794 Filderstadt Germany

info@allconnectors.de
Fax: 0049 711 7009504
Kettnerstr. 25

PART NO. BH-M-22	
DWG NO. BH-M-22	
FILE NO.	CHECKED BY CY
UNIT / mm	DRAWING BY
SCALE 1:1	PROJECTION

TOLERANCES ARE
.X ± 0.2
.XX ±
.XXX ±
AWG

DESCRIPTION:	4.00mm PITCH CRIMP TERMINAL-MALE			
AREA	REVISIONS	HK	DATE	