

**NOTES:**  
**SPECIFICATION**

- 1.Current : 5A max.
- 2.Voltage: 250V AC max.
- 3.Insulation Resistance: 1000 Megohms Min.
- 4.Contact Resistance: 10 Milliohms Max.
- 5.Dielectric Withstanding Voltage: 1500V AC
- 6.Non Operating Temperature: -40°C to +105°C

**MATERIAL**

- 1.Contact: Brass
- 2.Housing:Nylon66,UL 94V-2

NO. OF CONTACT	Dimension		NO. OF CONTACT	Dimension	
	A	B		A	B
02	3.96	8.06	10	35.64	39.74
03	7.92	12.02	11	39.60	43.70
04	11.88	15.98	12	43.56	47.66
05	15.84	19.94	13	47.52	51.62
06	19.80	23.90	14	51.48	55.58
07	23.76	27.86	15	55.44	59.54
08	27.72	31.82	16	59.40	63.50
09	31.68	35.78			

**RoHS Compliant**

**All Connectors**

www.allconnectors.de info@allconnectors.de  
Tel.: 0049 711 7009503 Fax: 0049 711 7009504  
70794 Filderstadt - Germany Kettnerstr. 25

**TOLERANCES ARE**

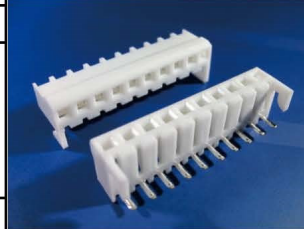
X ±  
X ±  
.XX ±  
.XXX ±  
ANG ±

DRAWING BY CY  
CHECKED BY GENIUS

UNIT/ mm SCALE 1 : 1

DATE

SIZE A4 PROJECTION



**ORDER INFORMATION**

**KX-S-xx-LF**

SERIES | SIDE ENTRY | 02~16WAY | LEADFREE

**DESCRIPTION:**