

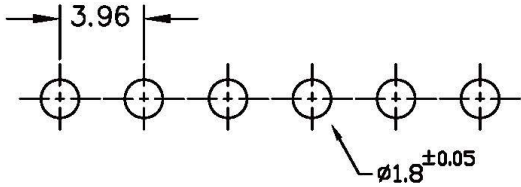
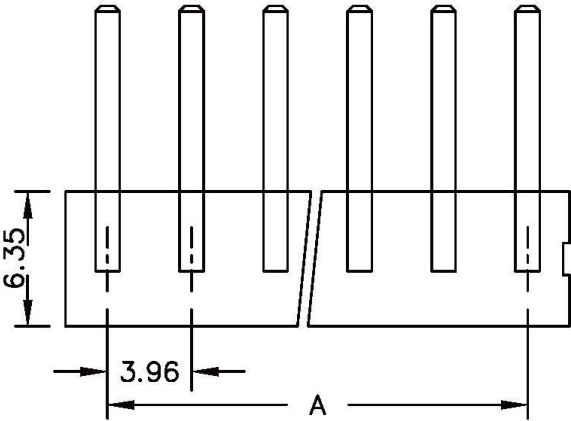
# SPECIFICATIONS

## Electrical

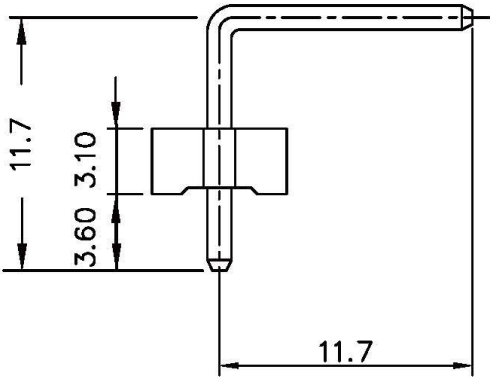
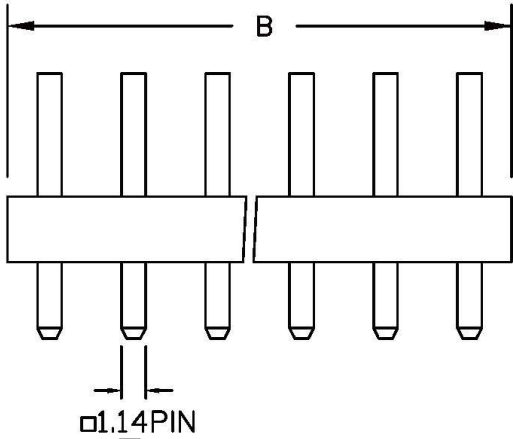
- Current Rating: 5A AC, DC
- Voltage Rating: 250V AC, DC
- Operating Temp.: -25°C ~ +85°C
- Insulation Resistance: 1000MΩ / min.
- Dielectric Withstanding Voltage: 1500V AC / min.
- Contact Resistance: 10mΩ / max.

## Material

Material: Nylon66, UL94V-2



PCB LAYOUT COMPONENT SIDE



Poles	Dimension mm (in.)		Part No.
	A	B	
2	3.96	8.00	KX-R-02
3	7.92	12.00	KX-R-03
4	11.88	15.90	KX-R-04
5	15.84	20.00	KX-R-05
6	19.80	24.00	KX-R-06
7	23.76	27.90	KX-R-07
8	27.72	31.90	KX-R-08
9	31.86	35.80	KX-R-09
10	35.64	39.90	KX-R-10
11	39.60	43.90	KX-R-11
12	43.56	47.80	KX-R-12
13	47.52	51.80	KX-R-13
14	51.48	55.70	KX-R-14
15	55.44	59.80	KX-R-15
16	59.40	63.80	KX-R-16
17	63.36	67.70	KX-R-17
18	67.32	71.70	KX-R-18
19	71.28	75.60	KX-R-19
20	75.24	79.80	KX-R-20

RoHS Compliant

TOLERANCES ARE

**All Connectors**

DRAWING BY CY

CHECKED BY GENIUS

UNIT / mm

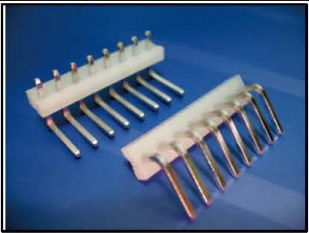
SCALE 1 : 1

DATE

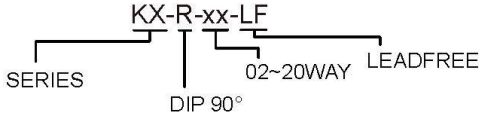
SIZE A4

PJECTION

X ±  
X ±  
.XX ±  
.XXX ±  
ANG ±



ORDER INFORMATION



www.allconnectors.de  
Tel.: 0049 711 7009503  
70794 Filderstadt - Germany

info@allconnectors.de  
Fax: 0049 711 7009504  
Kettnerstr. 25

DESCRIPTION: 3.96mm Wire-to-Board Header