

SPECIFICATIONS

Electrical

Current Rating: 5A AC, DC

Voltage Rating: 250V AC, DC

Operating Temp.: -25°C ~ +85°C

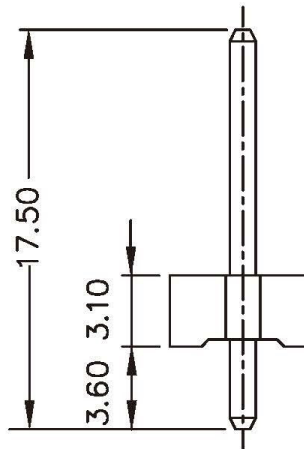
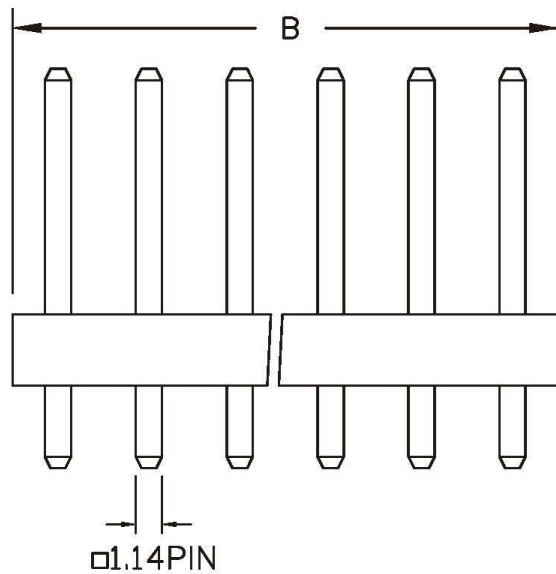
Insulation Resistance: 1000M Ω / min.

Dielectric Withstanding Voltage: 1500V AC/ min.

Contact Resistance: 10m Ω / max.

Material

Material: Nylon66, UL94V-2



Poles	Dimension mm (in.)		Part No.
	A	B	
2	3.96	8.00	KX-D-02
3	7.92	12.00	KX-D-03
4	11.88	15.90	KX-D-04
5	15.84	20.00	KX-D-05
6	19.80	24.00	KX-D-06
7	23.76	27.90	KX-D-07
8	27.72	31.90	KX-D-08
9	31.86	35.80	KX-D-09
10	35.64	39.90	KX-D-10
11	39.60	43.90	KX-D-11
12	43.56	47.80	KX-D-12
13	47.52	51.80	KX-D-13
14	51.48	55.70	KX-D-14
15	55.44	59.80	KX-D-15
16	59.40	63.80	KX-D-16
17	63.36	67.70	KX-D-17
18	67.32	71.70	KX-D-18
19	71.28	75.60	KX-D-19
20	75.24	79.80	KX-D-20

All Connectors

www.allconnectors.de

Tel.: 0049 711 7009503

70794 Filderstadt - Germany

info@allconnectors.de

Fax: 0049 711 7009504

Kettenerstr. 25

RoHS Compliant

DRAWING BY CY

CHECKED BY GENIUS

UNIT/ mm

SCALE 1:1

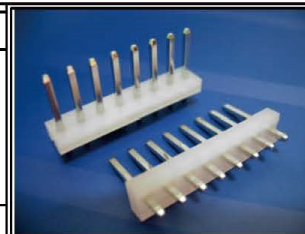
DATE

SIZE A4

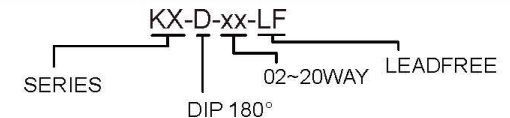
TOLERANCES ARE

X \pm
 .X \pm 0.50
 .XX \pm 0.35
 .XXX \pm
 ANG \pm

PROJECTION



ORDER INFORMATION



DESCRIPTION: 3.96mm Wire-to-Board Header Dip 180° Type