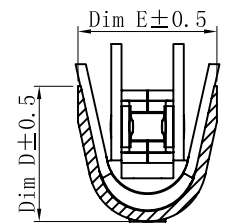
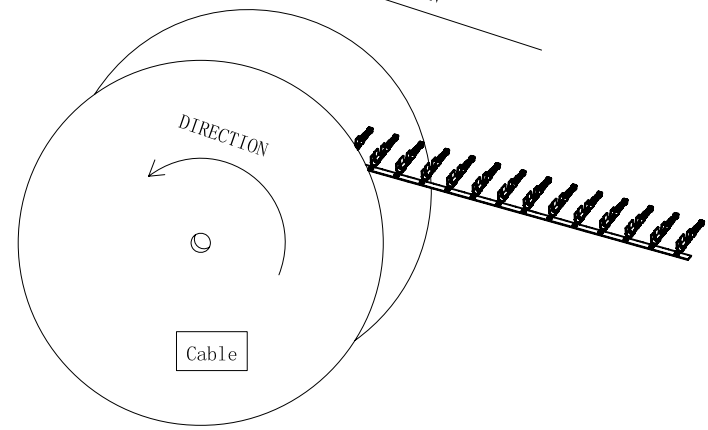
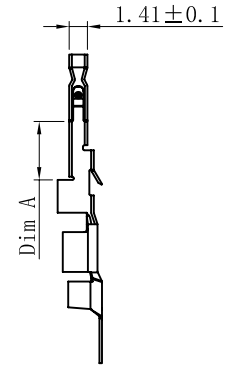
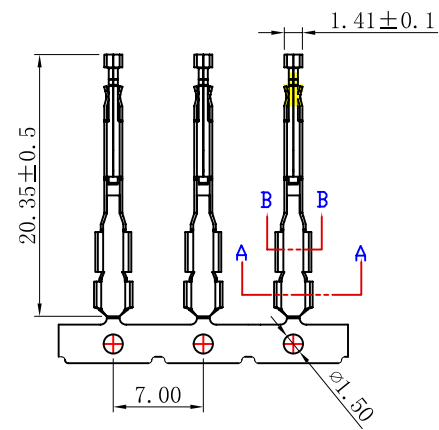
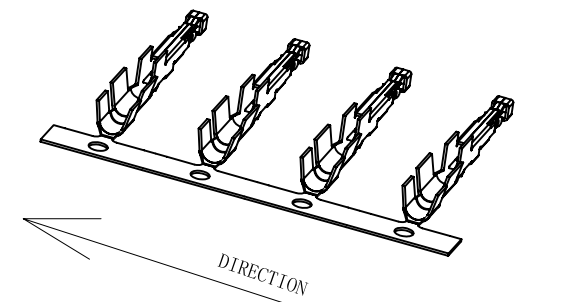
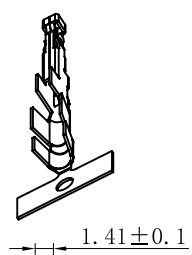
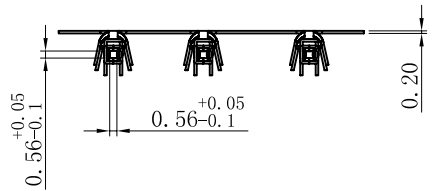
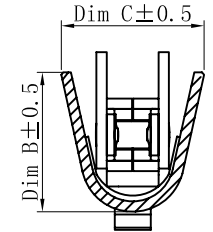


ROHS



Section A-A



Section B-B

S . C	Dimensions					
	Wire Size	DIM A	DIM B	DIM C	DIM D	DIM E
002	16~18AWG	4.54	2.71	2.77	2.63	2.89

TECHNIQUE REQUIRMENTS:
 Finish: Tin plated on soldering
 Packaging unit: 5,000 pcs/reel

			一般公差 GENERAL TOLERANCE	料号 Part NO. : 8350T1139002				 <small>www.allconnectors.de info@allconnectors.de</small> <small>Tel.: 0049 711 7009503 Fax: 0049 711 7009504</small> <small>70794 Filderstadt - Germany Kettenerstr. 25</small>				
			. X ±0.3 . XX ±0.2 . XXX ±0.1	品名 TITLE: 3.5X4.6mm 磷铜 Power Connector Crimp Terminal 板厚0.20 16~18# 全镀亮锡								
2017/06/13	A	New drawing	角法 PROJECT	单位 UNIT MM	比例 SCALE 1:1	页码 PAGE 01/01	图幅 SIZE A4	重量 WEI 0.01kg	核准 APPD	审核 CHK	绘图 DRA	日期 DATA
日期 DATA	版次 REV	变更内容 DESCRIPTION	执行者 EXEC By	客户料号 CSR Part NO. :				Eis	KHM	ZLY	2017/06/13	