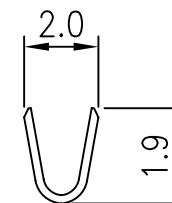
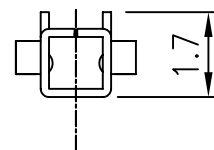
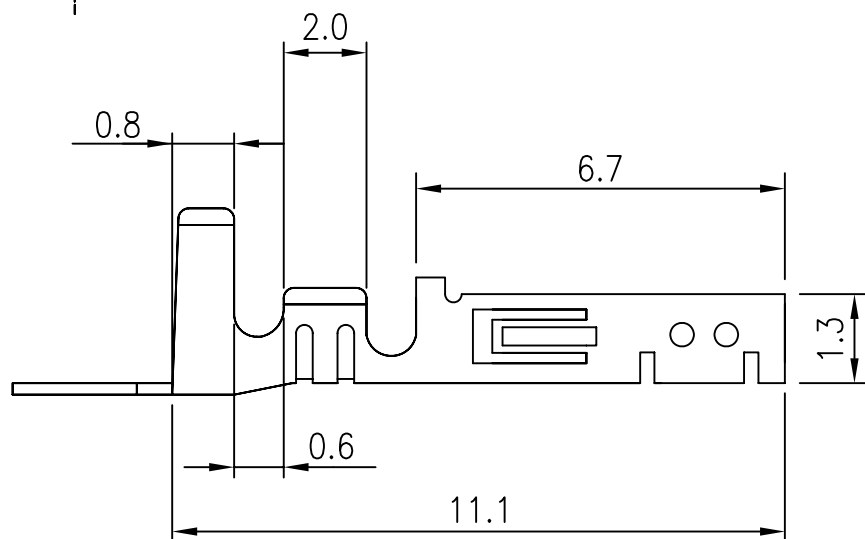


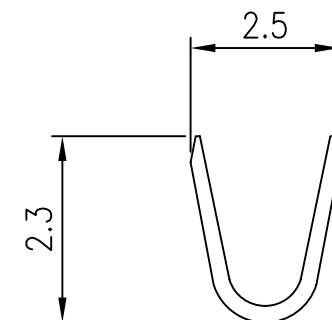
- * Material: Phosphor bronze
- * Finished: Tin-plated 60u"
- * Wire Range: AWG#20~#26
- * Thickness: 0.20mm
- * Q'TY: 10,000pcs/reel

MIF-FT-20-LF
LEADFREE

RoHS Compliant



B-B SECTION



A-A SECTION

All Connectors

www.allconnectors.eu | info@allconnectors.eu
Tel. +49 (0)711 / 358 110 20 | Fax +49 (0)711 / 358 110 25

PART NO. MIF-FT-20

DWG NO. MIF-FT-20

FILE NO.

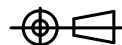
UNIT / mm

SCALE 1:1

APPROVED BY CY

DRAWING BY

PROJECTION



TOLERANCES ARE

.X
.XX
.XXX
AWG

DESCRIPTION:

3.0mm MICKO FIT FEMALE TERMINAL

AREA

REVISIONS

HK

DATE