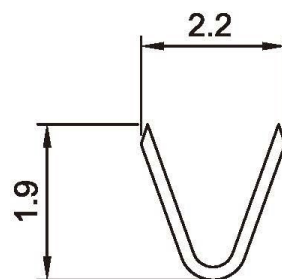
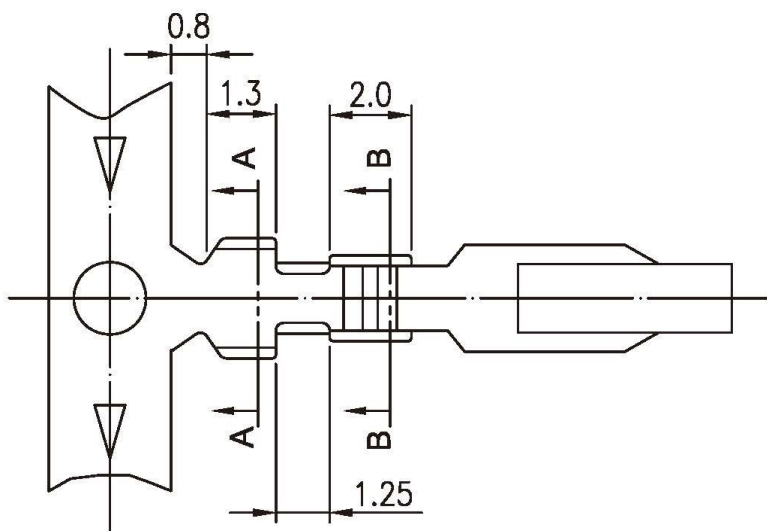
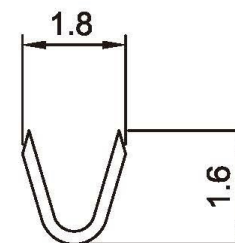


■ **TERMINAL**

- **Material:** Brass
- **Thickness:** 0.2mm
- **Plating:** Tin plated 60u"
- **Wire Range:** Suitable for AWG#22~28
- **Insulation O.D:** 1.5mm (max)
- **Q'TY:** 10,000 pcs/roll



A-A SECTION



B-B SECTION

All Connectors

www.allconnectors.de info@allconnectors.de
 Tel.: 0049 711 7009503 Fax: 0049 711 7009504
 70794 Filderstadt - Germany Kettenerstr. 25

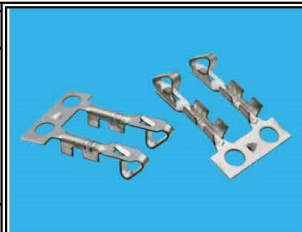
RoHS Compliant

DRAWING BY CY
 CHECKED BY GENIUS
 UNIT/mm SCALE 1:1
 DATE
 SIZE A4

TOLERANCES ARE

X ±
 .X ±
 .XX ±
 .XXX ±
 ANG ±

PROJECTION



ORDER INFORMATION

MKL-T-22-LF
 SERIES | LEADFREE
 | 22~28AWG
 TERMINAL

DESCRIPTION: 2.54mm Pitch Terminal