

■ **TERMINAL**

Material: Brass

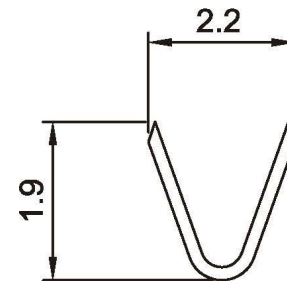
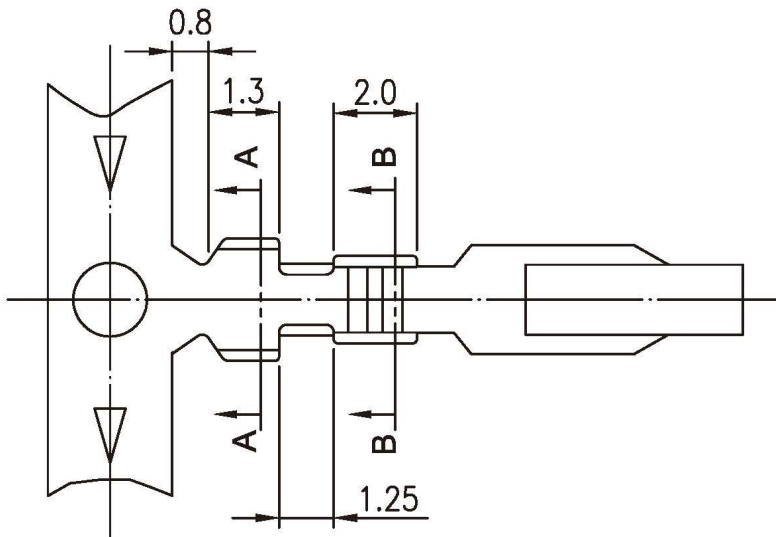
Thickness: 0.2mm

Plating: Tin plated 60u"

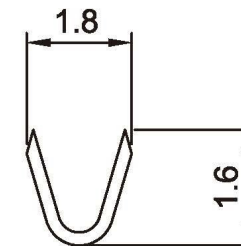
Wire Range: Suitable for AWG#22~28

Insulation O.D: 1.5mm (max)

Q'TY: 10,000 pcs/roll



A-A SECTION



B-B SECTION

All Connectors

www.allconnectors.de info@allconnectors.de
Tel.: 0049 711 7009503 Fax: 0049 711 7009504
70794 Filderstadt - Germany Kettenerstr. 25

RoHS Compliant

DRAWING BY CY
CHECKED BY GENIUS
UNIT / mm SCALE 1 : 1
DATE
SIZE A4

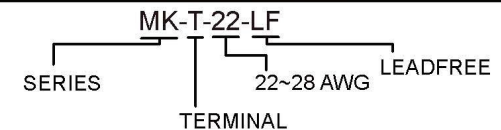
TOLERANCES ARE

X ±
.X ±
.XX ±
.XXX ±
ANG ±

PROJECTION



ORDER INFORMATION



DESCRIPTION: 2.54mm Pitch Terminal