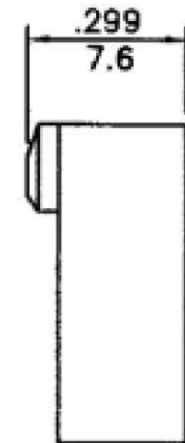
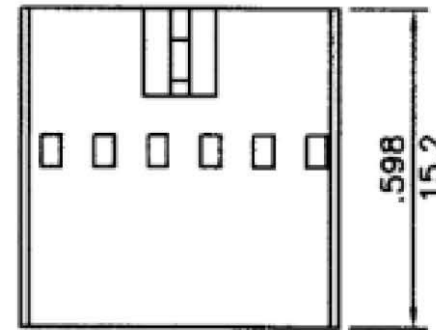
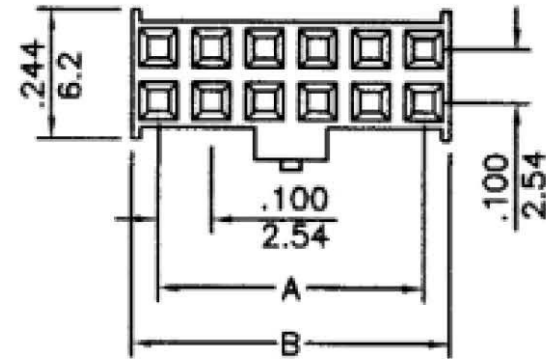


- \* Poles:6-36
- \* Material:PBTP UL94V-0,BLACK

**Specifications**

- \* Current rating: 3A AC, DC
- \* Voltage rating: 250V AC, DC
- \* Temperature range: -25°C~+85°C
- \* Insulation resistance: 1,000M Ω min.
- \* Withstand voltage: 1,000AC/minute



CIRCUITS	DIMENSION in.(mm)		CIRCUITS	DIMENSION in.(mm)	
	A	B		A	B
6	0.200(5.08)	0.300(7.62)	22	1.000(25.40)	1.100(27.94)
8	0.300(7.62)	0.400(10.16)	24	1.100(27.94)	1.200(30.48)
10	0.400(10.16)	0.500(12.70)	26	1.200(30.48)	1.300(33.02)
12	0.500(12.70)	0.600(15.24)	28	1.300(33.02)	1.400(35.56)
14	0.600(15.24)	0.700(17.78)	30	1.400(35.56)	1.500(38.10)
16	0.700(17.78)	0.800(20.32)	32	1.500(38.10)	1.600(40.64)
18	0.800(20.32)	0.900(22.86)	34	1.600(40.64)	1.700(43.18)
20	0.900(22.86)	1.000(25.40)	36	1.700(43.18)	1.800(45.72)

**RoHS Compliant**

TOLERANCES ARE

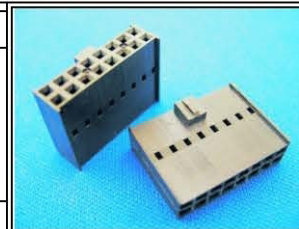
**All Connectors**

www.allconnectors.com  
 Tel: 0049 7141 4003408  
 Kettlerstr. 20  
 40784 Hildenstadt - Germany

DRAWING BY CY  
 CHECKED BY GENIUS  
 UNIT/mm SCALE 1:1  
 DATE  
 SIZE A4

X ±  
 X ±  
 .XX ±  
 .XXX ±  
 ANG ±

P PROJECTION



**ORDER INFORMATION**

MCT-H-2Xxx-LF  
 SERIES | LEADFREE  
 2X03:6PIN  
 2X18:36PIN  
 HOUSING

DESCRIPTION: