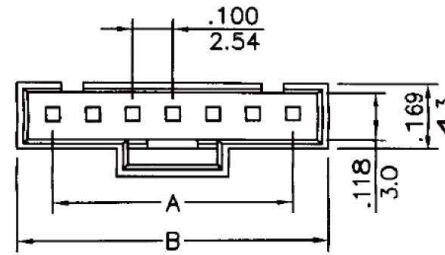


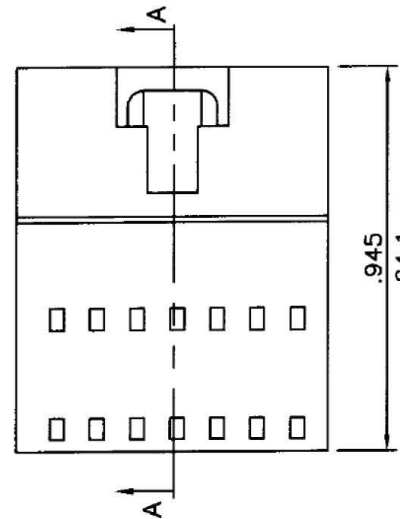
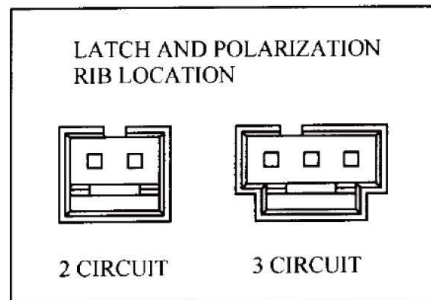
- \* Poles:2-15
- \* Material:PBT UL94V-0 ,BLACK

**Specifications**

- \* Current rating: 2.5A AC, DC
- \* Voltage rating: 250V AC, DC
- \* Temperature range: -25°C~+85°C
- \* Insulation resistance: 1,000MΩ min.
- \* Withstand voltage: 800V AC/minute



inches  
mm



.236  
6.0

SECTION A-A

CIRCUITS	PART NO.	DIMENSION in.(mm)		CIRCUITS	PART NO.	DIMENSION in.(mm)	
		A	B			A	B
2	MCG-P-1X02	0.100(2.54)	0.280(7.1)	9	MCG-P-1X09	0.800(20.32)	0.980(24.9)
3	MCG-P-1X03	0.200(5.08)	0.382(9.7)	10	MCG-P-1X10	0.900(22.86)	1.079(27.4)
4	MCG-P-1X04	0.300(7.62)	0.480(12.2)	11	MCG-P-1X11	1.000(25.40)	1.181(30.0)
5	MCG-P-1X05	0.400(10.16)	0.579(14.7)	12	MCG-P-1X12	1.100(27.94)	1.280(32.5)
6	MCG-P-1X06	0.500(12.70)	0.681(17.3)	13	MCG-P-1X13	1.200(30.48)	1.378(35.0)
7	MCG-P-1X07	0.600(15.24)	0.780(19.8)	14	MCG-P-1X14	1.300(33.02)	1.445(37.6)
8	MCG-P-1X08	0.700(17.78)	0.882(22.4)	15	MCG-P-1X15	1.400(35.56)	1.580(40.1)

**Allconnectors**

www.allconnectors.de info@allconnectors.de  
Tel.: 0049 711 7009503 Fax: 0049 711 7009504  
70794 Filderstadt - Germany Kettenerstr. 25

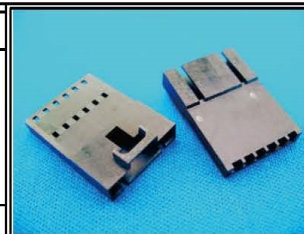
**RoHS Compliant**

DRAWING BY CY  
CHECKED BY GENIUS  
UNIT/ mm SCALE 1 : 1  
DATE  
SIZE A4

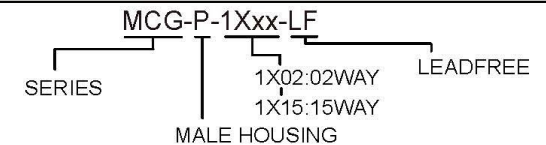
TOLERANCES ARE

X ±  
.X ±  
.XX ±  
.XXX ±  
ANG ±

PJECTION



ORDER INFORMATION



DESCRIPTION: