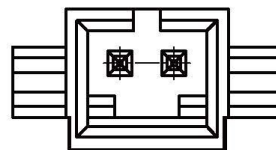
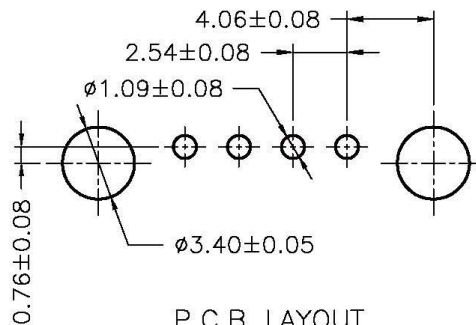
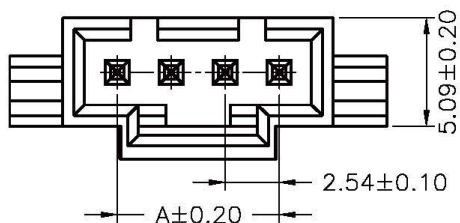


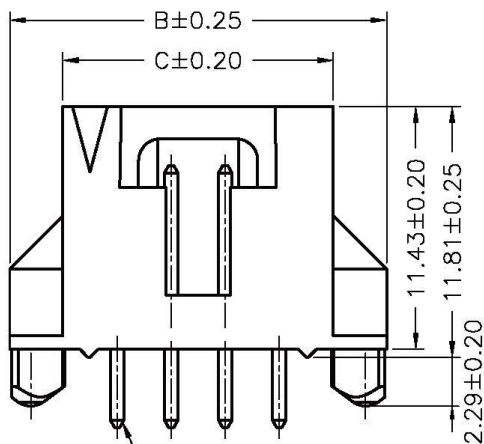
3P



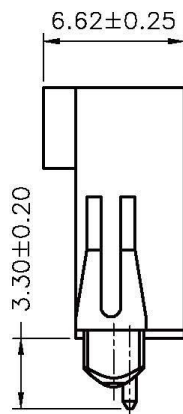
2P



P.C.B LAYOUT



PIN 0.64 SQ,
Circuit 1



SPECIFICATIONS

Current Rating: 3A AC,DC
 Voltage Rating: 250V AC,DC
 Temperature Range: -25°C ~ +85°C
 Contact Resistance: 20mΩ Max
 Insulation Resistance: 1000MΩ Min
 Withstanding Voltage: 15000V AC/minute
 Pin Material: Brass/Gold-flash
 Material: PBT30%GF,UL94V-0
 Color: Natural(Black)

Ordering Information & Dimensions

PART NO.	Dimensions		
	A	B	C
MCG-DP2-1X02	2.54	12.63	7.63
MCG-DP2-1X03	5.08	15.17	10.17
MCG-DP2-1X04	7.62	17.71	12.71
MCG-DP2-1X05	10.16	20.25	15.25
MCG-DP2-1X06	12.70	22.79	17.79
MCG-DP2-1X07	15.24	25.33	20.33
MCG-DP2-1X08	17.78	27.87	22.87
MCG-DP2-1X09	20.32	30.41	25.41
MCG-DP2-1X10	22.86	32.95	27.95
MCG-DP2-1X11	25.40	35.49	30.49
MCG-DP2-1X12	27.94	38.03	33.03

RoHS Compliant

TOLERANCES ARE

All Connectors

DRAWING BY CY

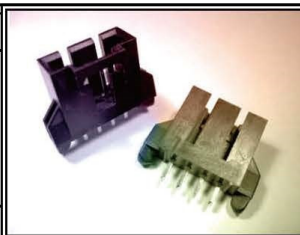
CHECKED BY GENIUS

UNIT/ mm SCALE 1:1

DATE

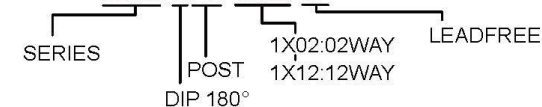
SIZE A4 PROJECTION

X±
X±
.XX±
.XXX±
ANG±



ORDER INFORMATION

MCG-DP2-1Xxx-LF



DESCRIPTION: 2.54mm PITCH 180° WAFER

www.allconnectors.de
 Tel.: 0049 711 7009503
 70794 Filderstadt - Germany

info@allconnectors.de
 Fax: 0049 711 7009504
 Kettnerstr. 25