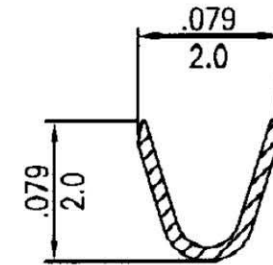
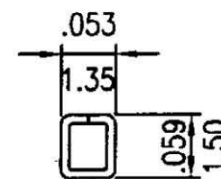
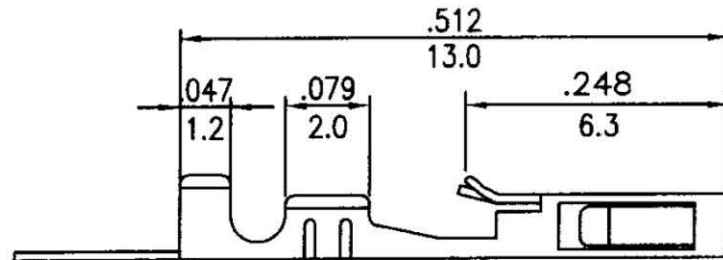
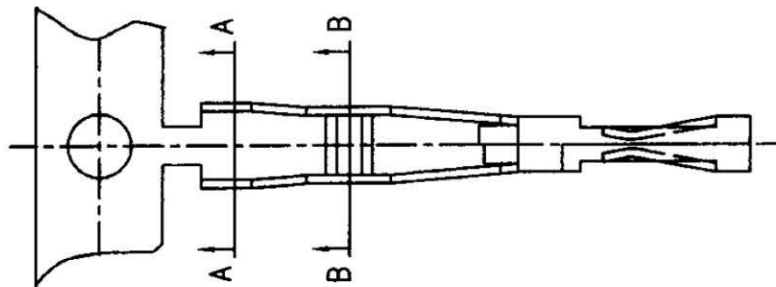
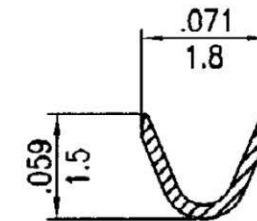


- \* Material: Phos bronze
- \* Finished: Tin-plated
- \* Wire range: AWG#24~#28
- \* Insulation O.D: 1.60mm(max)
- \* Thickness: 0.2mm
- \* Q'TY: 15,000pcs/reel

inches  
mm



A-A SECTION



B-B SECTION

RoHS Compliant

TOLERANCES ARE

All Connectors

DRAWING BY CY

X ±

CHECKED BY GENIUS

.X ±

UNIT / mm

SCALE 1 : 1

.XX ±

DATE

.XXX ±

SIZE A4

PJECTION



ORDER INFORMATION

MCB-T-24-LF  
SERIES | LEADFREE  
24-28 AWG  
TERMINAL

DESCRIPTION:

www.allconnectors.de  
tel.: 0049 711 409503  
All 714 1141erstadt - Germany

info@allconnectors.de  
fax: 0049 711 409504  
Kettnerstr. 75