

## Connector

### Wire To Board Connectors

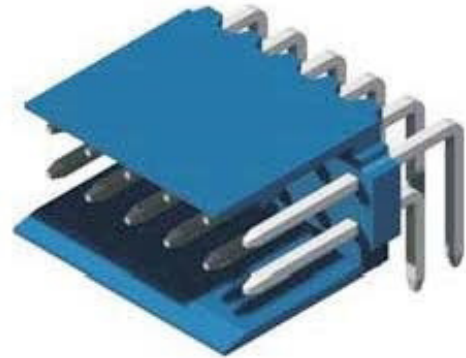
#### KLS1-TE-2.54 (2.54mm Pitch Wire To Board Connector)

##### Electrical Characteristics:

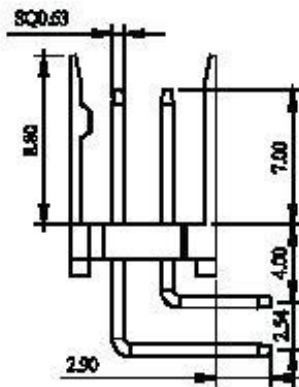
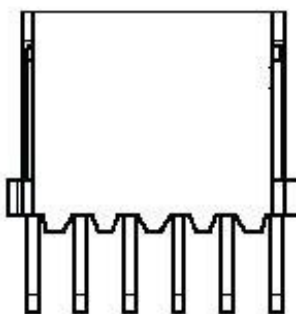
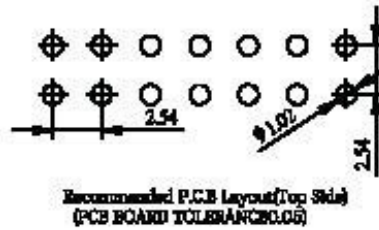
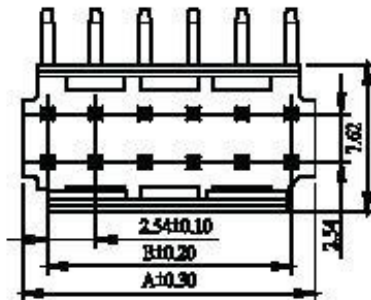
Current Rating: 3A  
Voltage Rating: 250V AC DC  
Insulator Resistance: 1000 MΩ Min.  
Contact Resistance: 20 mΩ Max.  
Withstanding Voltage: AC 1000V for 1 Minute  
Operating Temperature: -25°C ~ +85°C

##### Material:

Insulator: P. B. T. UL94V-0  
Contacts: Brass / Tin Plated



#### Right Type



No. of Contacts	Dimensions	
	A	B
2x2	5.08	2.54
2x3	7.62	5.08
2x4	10.16	7.62
2x5	12.70	10.16
2x6	15.24	12.70
2x7	17.78	15.24
2x8	20.32	17.78
2x9	22.86	20.32
2x10	25.40	22.86
2x11	27.94	25.40
2x12	30.48	27.94
2x13	33.02	30.48
2x14	35.56	33.02
2x15	38.10	35.56
2x16	40.64	38.10
2x17	43.18	40.64
2x18	45.72	43.18
2x19	48.26	45.72
2x20	50.80	48.26

## ORDER INFORMATION

Product NO.: KLS1-TE-2.54-2\*02-R

Pos. NO. \_\_\_\_\_ Type: H-Housing T-Terminal  
Pitch 2.54mm \_\_\_\_\_ S-Straight Type R-Right Type  
Pins: 1 Singlelayer 2 Doublelayer \_\_\_\_\_ Pin Number: 2 ~ 20Pin