

## Connector

### Wire To Board Connectors

KLS1-TE-2.54 (2.54mm Pitch Wire To Board Connector)

#### Electrical Characteristics:

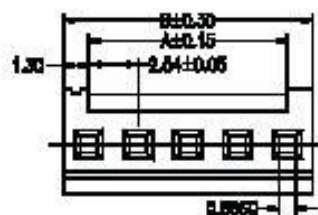
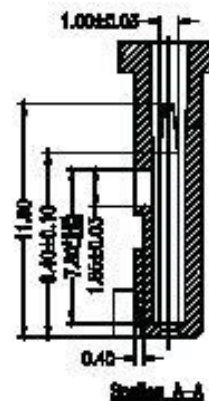
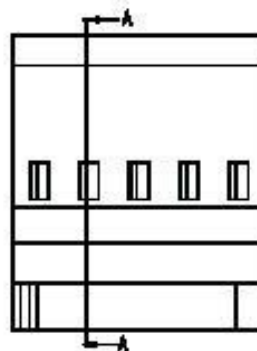
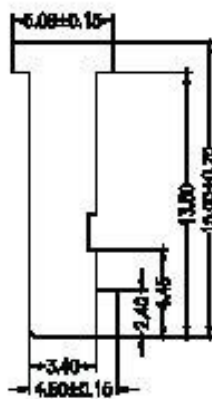
Current Rating: 3A  
 Voltage Rating: 250V AC DC  
 Insulator Resistance: 1000MΩ Min.  
 Contact Resistance: 20mΩ Max.  
 Withstanding Voltage: AC 1000V for 1 Minute  
 Operating Temperature: -25°C~+85°C

#### Material:

Insulator: P.B.T UL94V-0  
 Contacts: Brass / Tin Plated



#### Housing



No. of Contacts	Dimensions	
	A	B
2	2.54	5.08
3	5.08	7.62
4	7.62	10.16
5	10.16	12.70
6	12.70	15.24
7	15.24	17.78
8	17.78	20.32
9	20.32	22.86
10	22.86	25.40
12	27.94	30.48
15	36.56	38.10
18	45.18	45.72
20	48.25	50.80

### ORDER INFORMATION

Product NO.: KLS1-TE-2.54-1\*02-H

