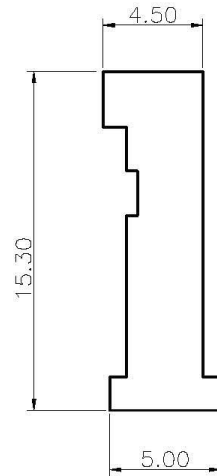
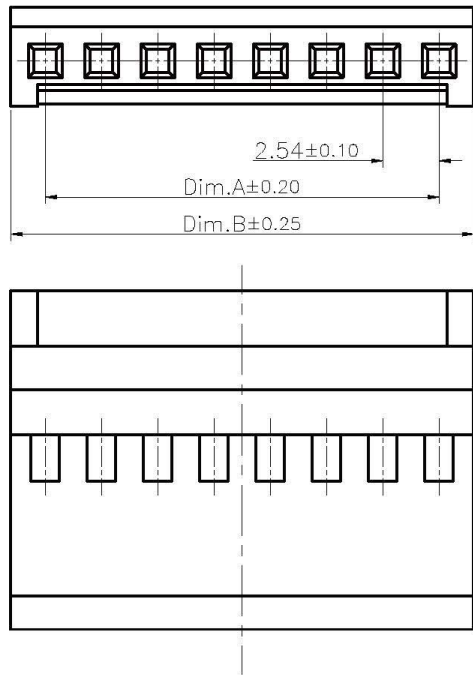


Specifications:
 Current Rating:3.0A AC,DC
 Voltage Rating:250V AC,DC
 Contact Resistance:20mohm Max
 Insulation Resistance:1000Mohm Min.
 Withstanding Voltage:1000V AC/minute
 Operating Temperature Range:-25°C~+85°C
 Material and Finish:
 Insulator:PBT (UL94V-0)
 Insulator Color:Black
 Contact:Phosphor Bronze
 Plating:Tin Plated



Dimension:



| Circuits | Dimension: | | Circuits | Dimension: | |
|----------|------------|-------|----------|------------|-------|
| | A | B | | A | B |
| 02 | 2.54 | 5.08 | 12 | 27.94 | 30.48 |
| 03 | 5.08 | 7.62 | 13 | 30.48 | 33.02 |
| 04 | 7.62 | 10.16 | 14 | 33.02 | 35.56 |
| 05 | 10.16 | 12.70 | 15 | 35.56 | 38.10 |
| 06 | 12.70 | 15.24 | 16 | 38.10 | 40.64 |
| 07 | 15.24 | 17.78 | 17 | 40.64 | 43.18 |
| 08 | 17.78 | 20.32 | 18 | 43.18 | 45.72 |
| 09 | 20.32 | 22.86 | 19 | 45.72 | 48.26 |
| 10 | 22.86 | 25.40 | 20 | 48.26 | 50.80 |
| 11 | 25.40 | 27.94 | | | |

RoHS Compliant

All Connectors

www.allconnectors.de info@allconnectors.de
 Tel.: 0049 711 7009503 Fax: 0049 711 7009504
 70794 Filderstadt - Germany Kettenerstr. 25

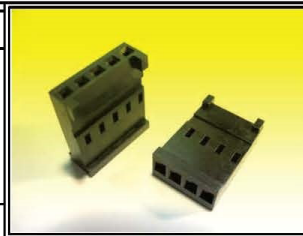
DRAWING BY CY
CHECKED BY GENIUS

UNIT/ mm **SCALE 1 : 1**

DATE

SIZE A4 **PROJECTION**

TOLERANCES ARE
 X ±
 .X ± 0.20
 .XX ± 0.15
 .XXX ±
 ANG ±



ORDER INFORMATION

HE14-H-1Xxx-LF

SERIES | LEADFREE
 1X02:02WAY
 1X20:20WAY
 HOUSING

DESCRIPTION: 2.54mm Wire to Board Housing