

# A2547 SERIES

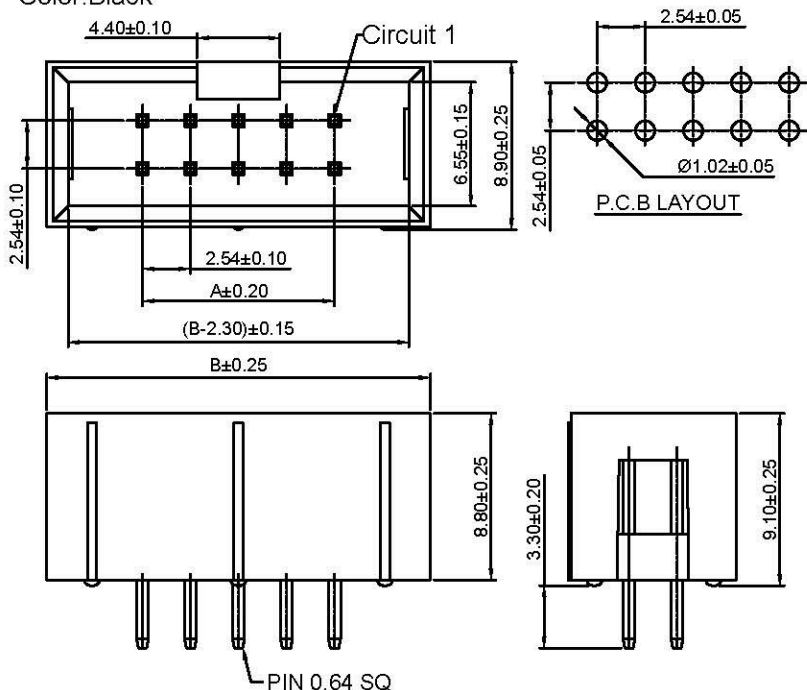
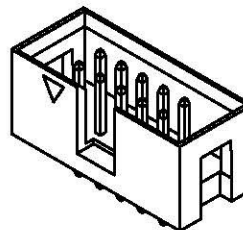
2.54mm pitch wire to board connector

## A2547WW-N-2

2.54mm Pitch 180° Box Header

### Reference Informations:

- \*Material: Pin: Brass/Gold over Nickel  
Insulator: PBT 15%GF, UL94V-0
- \*Mates with A2547H series Dual row Housing
- \*Nylon 46 is available
- \*Color: Black



### Ordering Information & Dimensions:

PART NO.	Dimensions		PART NO.	Dimensions	
	A	B		A	B
A2547WW-N-2x2P	2.54	5.14	A2547WW-N-2x22P	53.34	55.88
A2547WW-N-2x3P	5.08	7.68	A2547WW-N-2x23P	55.88	58.42
A2547WW-N-2x4P	7.62	10.22	A2547WW-N-2x24P	58.42	60.96
A2547WW-N-2x5P	10.16	12.76	A2547WW-N-2x25P	60.96	63.50
A2547WW-N-2x6P	12.70	15.30	A2547WW-N-2x26P	63.50	66.04
A2547WW-N-2x7P	15.24	17.84	A2547WW-N-2x27P	66.04	68.58
A2547WW-N-2x8P	17.78	20.38	A2547WW-N-2x28P	68.58	71.12
A2547WW-N-2x9P	20.32	22.92	A2547WW-N-2x29P	71.12	73.66
A2547WW-N-2x10P	22.86	25.46	A2547WW-N-2x30P	73.66	76.20
A2547WW-N-2x11P	25.40	28.00	A2547WW-N-2x31P	76.20	78.74
A2547WW-N-2x12P	27.94	30.54	A2547WW-N-2x32P	78.74	81.28
A2547WW-N-2x13P	30.48	33.08	A2547WW-N-2x33P	81.28	83.82
A2547WW-N-2x14P	33.02	35.62	A2547WW-N-2x34P	83.82	86.36
A2547WW-N-2x15P	35.56	38.16	A2547WW-N-2x35P	86.36	88.90
A2547WW-N-2x16P	38.10	40.72	A2547WW-N-2x36P	88.90	91.44
A2547WW-N-2x17P	40.64	43.24	A2547WW-N-2x37P	91.44	93.98
A2547WW-N-2x18P	43.18	45.78	A2547WW-N-2x38P	93.98	96.52
A2547WW-N-2x19P	45.72	48.34	A2547WW-N-2x39P	96.52	99.06
A2547WW-N-2x20P	48.26	50.88	A2547WW-N-2x40P	99.06	101.60
A2547WW-N-2x21P	50.80	53.34			

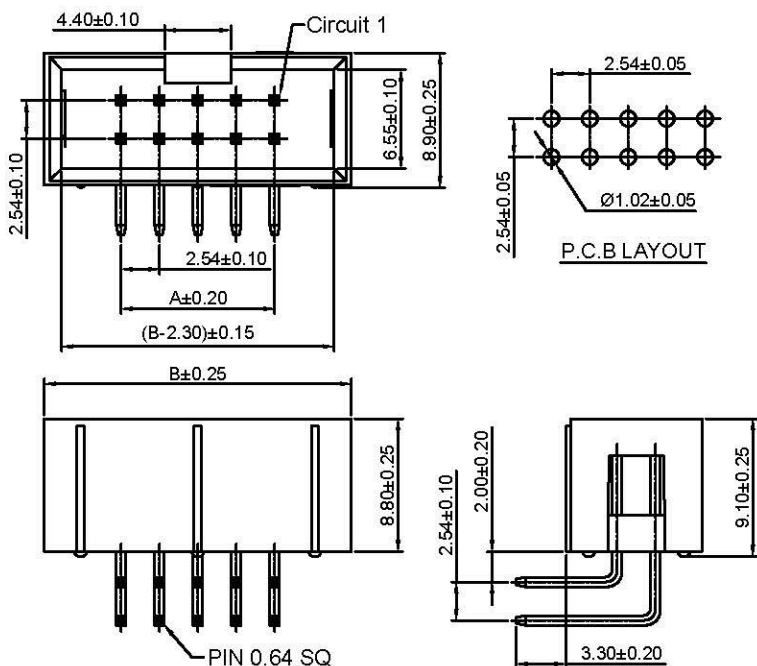
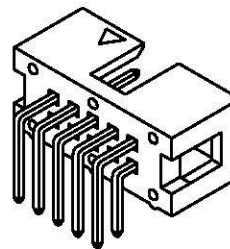
Unit: mm

## A2547WR-N-2

2.54mm Pitch 90° Box Header

### Reference Informations:

- \*Material: Pin: Brass/Gold over Nickel  
Insulator: PBT 15%GF, UL94V-0
- \*Mates with A2547H series dual row Housing
- \*Nylon 46 is available
- \*Color: Black



### Ordering Information & Dimensions:

PART NO.	Dimensions		PART NO.	Dimensions	
	A	B		A	B
A2547WR-N-2x2P	2.54	12.70	A2547WR-N-2x22P	53.34	55.88
A2547WR-N-2x3P	5.08	15.24	A2547WR-N-2x23P	55.88	58.42
A2547WR-N-2x4P	7.62	17.78	A2547WR-N-2x24P	58.42	60.96
A2547WR-N-2x5P	10.16	20.32	A2547WR-N-2x25P	60.96	63.50
A2547WR-N-2x6P	12.70	22.86	A2547WR-N-2x26P	63.50	66.04
A2547WR-N-2x7P	15.24	25.40	A2547WR-N-2x27P	66.04	68.58
A2547WR-N-2x8P	17.78	27.94	A2547WR-N-2x28P	68.58	71.12
A2547WR-N-2x9P	20.32	22.92	A2547WR-N-2x29P	71.12	73.66
A2547WR-N-2x10P	22.86	25.46	A2547WR-N-2x30P	73.66	76.20
A2547WR-N-2x11P	25.40	28.00	A2547WR-N-2x31P	76.20	78.74
A2547WR-N-2x12P	27.94	30.54	A2547WR-N-2x32P	78.74	81.28
A2547WR-N-2x13P	30.48	33.08	A2547WR-N-2x33P	81.28	83.82
A2547WR-N-2x14P	33.02	35.62	A2547WR-N-2x34P	83.82	86.36
A2547WR-N-2x15P	35.56	38.16	A2547WR-N-2x35P	86.36	88.90
A2547WR-N-2x16P	38.10	40.72	A2547WR-N-2x36P	88.90	91.44
A2547WR-N-2x17P	40.64	43.24	A2547WR-N-2x37P	91.44	93.98
A2547WR-N-2x18P	43.18	45.78	A2547WR-N-2x38P	93.98	96.52
A2547WR-N-2x19P	45.72	48.34	A2547WR-N-2x39P	96.52	99.06
A2547WR-N-2x20P	48.26	50.88	A2547WR-N-2x40P	99.06	101.60
A2547WR-N-2x21P	50.80	53.34			

Unit: mm