

1 2 3 4 5 6 7 8 9 0

J

I

H

G

F

E

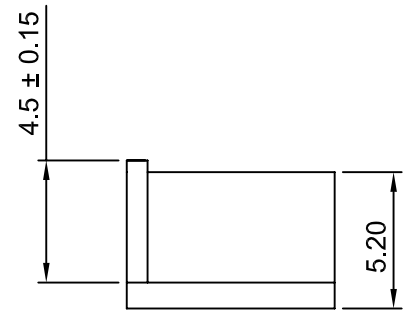
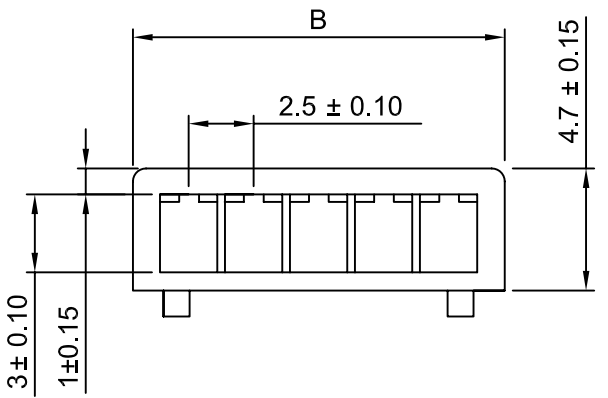
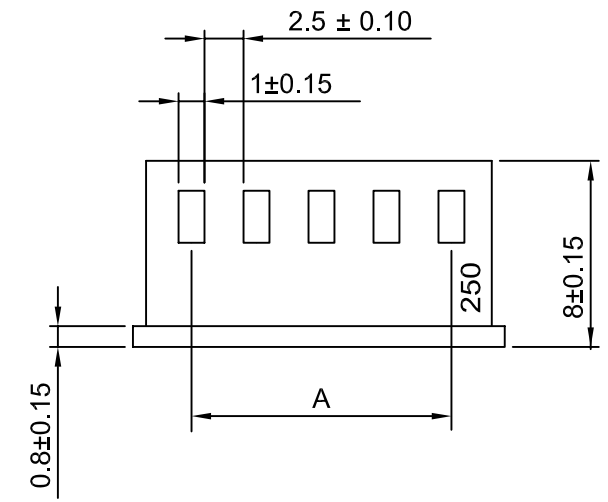
D

C

B

A

**SPECIFICATION**  
 CURRENT RATING: 3A AC,DC  
 VOLTAGE RATING: 250V AC,DC  
 TEMPERATURE RANGE: -25°C TO +85°C  
 (INCLUDING TEMPERATURE RISE)  
 CONTACT RESISTANCE: INITIAL VALUE/10M OHM MAX.  
 AFTER ENVIRONMENTAL TESTING/20M OHM MAX.  
 INSULATION RESISTANCE: 1,000M OHM MIN.  
 WITHSTANDING VOLTAGE: 1,000V AC/MINUTE  
**MATERIAL AND FINISH**  
 CONTACT: PHOSPHOR BRONZE, TIN-PLATED  
 HOUSING: NYLON 66, UL94V-0  
 POST: COPPER-UNDERCOATED, TIN/LEAD PLATED  
 WAFER: NYLON 66, UL94V-0  
 APPLICABLE WIRE: AWG #28 TO #22



CIRCUITS	DIM.A	DIM.B
2	2.50	6.74
3	5.00	9.24
4	7.50	11.74
5	10.00	14.24
6	12.50	16.74
7	15.00	19.24
8	17.50	21.74
9	20.00	24.24
10	22.50	26.74
11	25.00	29.24
12	27.50	31.74
13	30.00	34.24
14	32.50	36.74
15	35.00	39.24



PART NO. RM-H-xx		APPROVED BY CY		TOLERANCES ARE X. XX. XXX. AWG	DESCRIP TION: <b>2.5MM WIRE TO BOARD CONNECTOR</b>	AREA	REVISIONS	HK	DATE
DWG NO. RM-H-xx		DRAWING BY							
FILE NO.		PROJECTION							
UNIT / mm	SCALE 1:1								