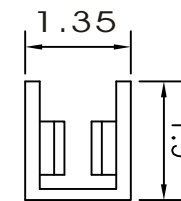
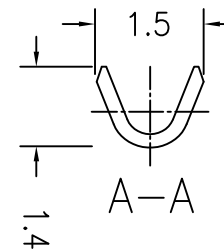
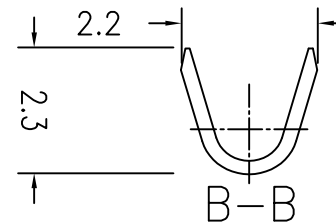
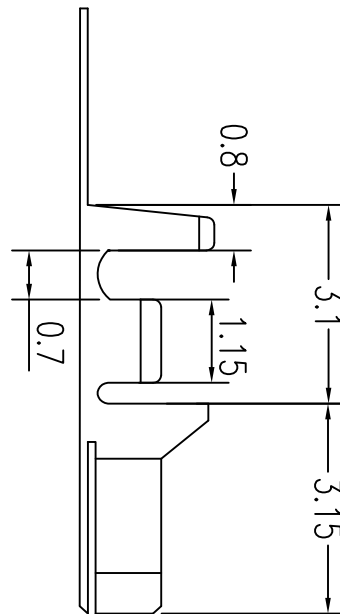
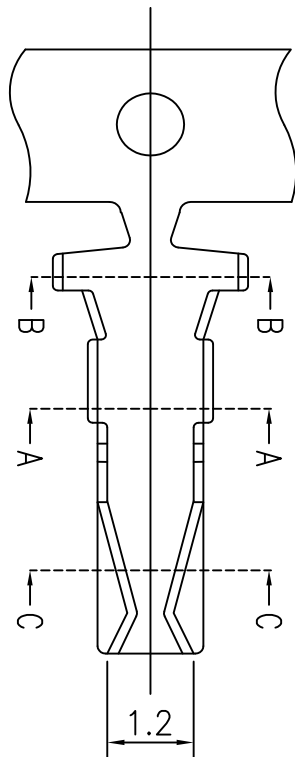


Features:


- * Accepts AWG 26~30 wire range
- Material : Phosphor Bronze
- Finish : Tin-plated & Gold-flash
- * Qty/reel: 10000 PCS
- * Thickness:0.2
- * Tolerance±0.2mm

Specification :

Pitch between poles	2.0mm
Rate Voltage	250V AC,DC
Rated Current	1A.AC,DC
* Applicable Wire	AWG#26~#30



C-C

PART NO. YH20-T-26		APPROVED BY CY		TOLERANCES ARE .X .XX .XXX AWG	DESCRIP TION:			
DWG NO. YH20-T-26		DRAWING BY			AREA	REVISIONS	HK	DATE
FILE NO.		PROJECTION 						
UNIT / mm	SCALE 1:1							