

P.C.B. LAYOUT

SPECIFICATIONS

CURRENT RATING: 3A AC,DC

VOLTAGE RATING: 250V AC,DC

TEMPERATURE RANGE: -25°C ~ +85°C
(INCLUDING TEMPERATURE RISE)

INSULATION RESISTANCE: 1,000M MIN.

WITHSTAND VOLTAGE: 800V AC/MINUTE

APPLICABLE WIRES: AWG #28 ~ #22

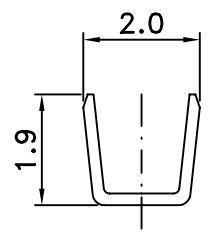
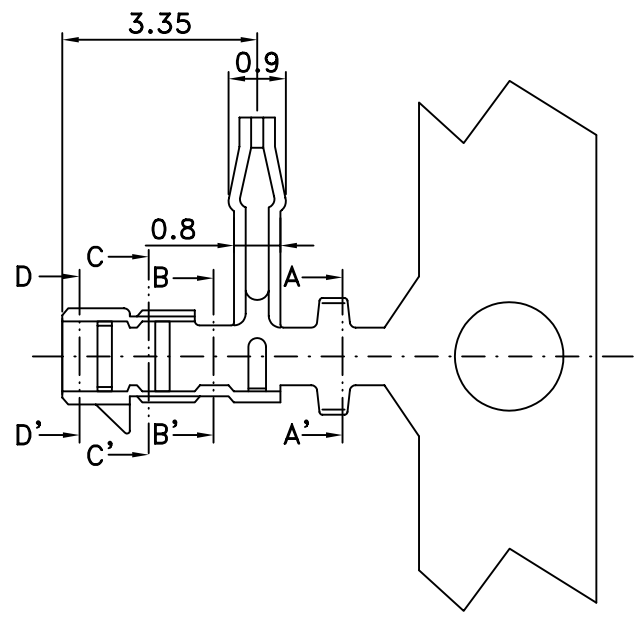
APPLICABLE PC BOARD THICKNESS

SHAPE A CONTACT: .047(1.2)

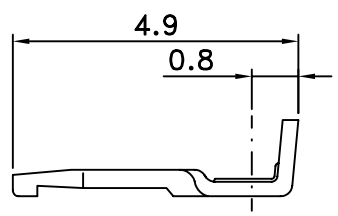
MATERIAL AND FINISH:

HOUSING: NYLON 66 UL94V-0

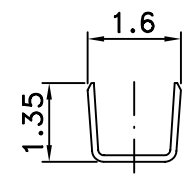
CONTACTS: PHOSPHOR BRONZE, TIN PLATING



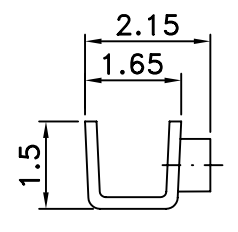
SECTION A-A'



SECTION B-B'



SECTION C-C'



SECTION D-D'

PART NO. SAR-T-22		APPROVED BY CY		TOLERANCES ARE X. ± 0.2 XX. XXX. AWG	DESCRIP TION: 2.0MM TERMINAL			
DWG NO. SAR-T-22		DRAWING BY			AREA	REVISIONS	HK	DATE
FILE NO.		PROJECTION						
UNIT / mm	SCALE 1:1							