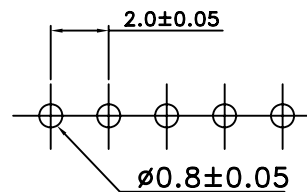


1310T



P.C.B. LAYOUT

SPECIFICATIONS

CURRENT RATING: 3A AC,DC

VOLTAGE RATING: 250V AC,DC

TEMPERATURE RANGE: -25°C ~ +85°C

(INCLUDING TEMPERATURE RISE)

INSULATION RESISTANCE: 1,000M MIN.

WITHSTAND VOLTAGE: 800V AC/MINUTE

APPLICABLE WIRES: AWG #28 ~ #22

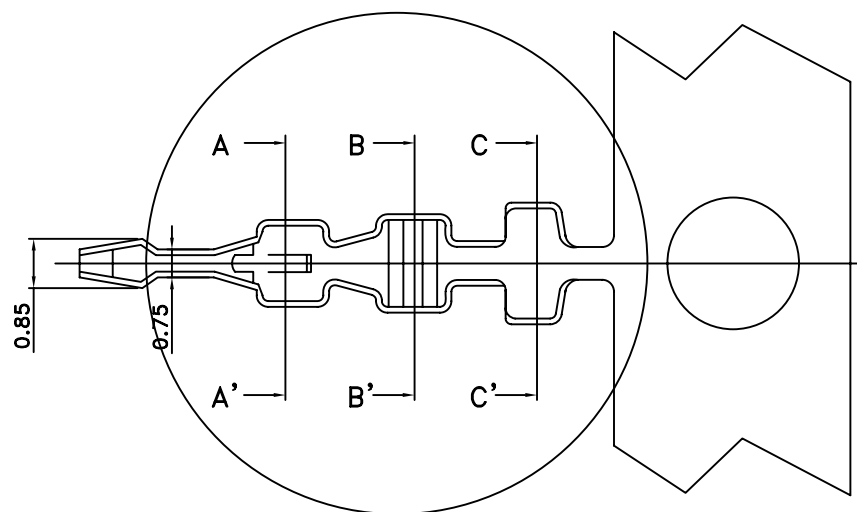
APPLICABLE PC BOARD THICKNESS

SHAPE A CONTACT: .047(1.2)

MATERIAL AND FINISH:

HOUSING: NYLON 66 UL94V-0

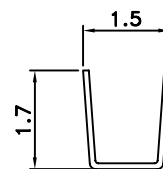
CONTACTS: PHOSPHOR BRONZE, TIN PLATING



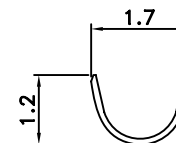
SAN-T-22-LF

LEADFREE

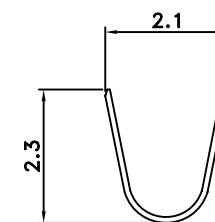
RoHS Compliant



SECTION A-A'



SECTION B-B'



SECTION C-C'

**All Connectors**

www.allconnectors.eu | info@allconnectors.eu  
Tel. +49 (0)711 / 358 110 20 | Fax +49 (0)711 / 358 110 25

PART NO. SAN-T-22		APPROVED BY CY		TOLERANCES ARE X. ± 0.20 XX. ± 0.15 XXX. ± 0.15 AWG	DESCRIP TION: <b>2.0MM TERMINAL</b>			
DWG NO. SAN-T-22		DRAWING BY			AREA	REVISIONS	HK	DATE
FILE NO.		PROJECTION						
UNIT / mm	SCALE 1:1							