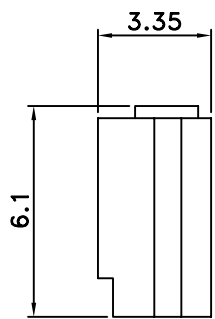
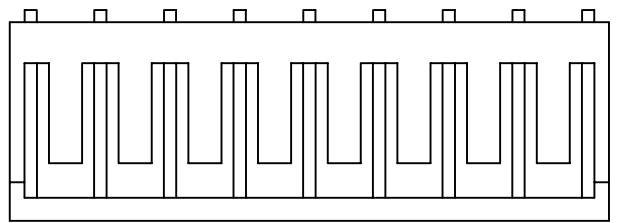
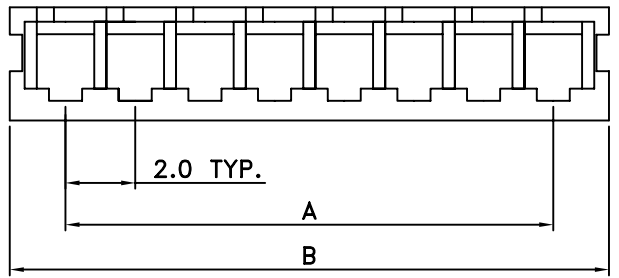


**SPECIFICATIONS**

CURRENT RATING: 3A AC,DC  
 VOLTAGE RATING: 250V AC,DC  
 TEMPERATURE RANGE: -25°C ~ +85°C  
 (INCLUDING TEMPERATURE RISE)  
 INSULATION RESISTANCE: 1,000M MIN.  
 WITHSTAND VOLTAGE: 800V AC/MINUTE  
 APPLICABLE WIRES: AWG #28 ~ #22  
 APPLICABLE PC BOARD THICKNESS  
 SHAPE A CONTACT:.047(1.2)  
 MATERIAL AND FINISH:  
 HOUSING:NYLON 66 UL94V-0  
 CONTACTS:PHOSPHOR BRONZE,TIN PLATING



CIRCUITS	DIM.A	DIM.B
2	2.00	5.20
3	4.00	7.20
4	6.00	9.20
5	8.00	11.20
6	10.00	13.20
7	12.00	15.20
8	14.00	17.20
9	16.00	19.20
10	18.00	21.20
11	20.00	23.20
12	22.00	25.20
13	24.00	27.20
14	26.00	29.20
15	28.00	31.20
16	30.00	33.20

**SAN-H-xx-LF**  
**LEADFREE**  
**RoHS Compliant**

PART NO. SAN-H-xx		APPROVED BY CY		TOLERANCES ARE X. ± 0.20 XX. ± 0.15 XXX. AWG	DESCRIP TION: <b>2.0MM HOUSING</b>			
DWG NO. SAN-H-xx		DRAWING BY			AREA	REVISIONS	HK	DATE
FILE NO.		PROJECTION						
UNIT / mm	SCALE 1:1							