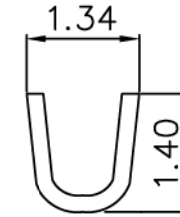
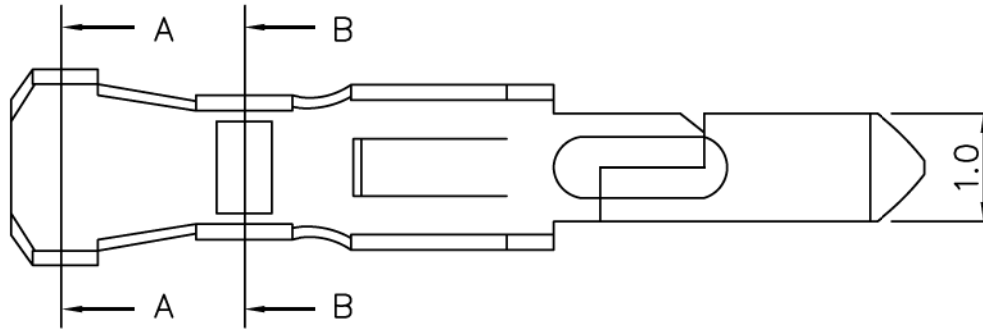
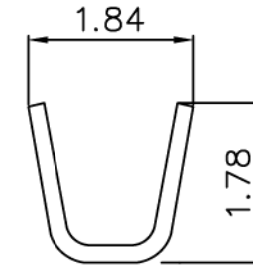
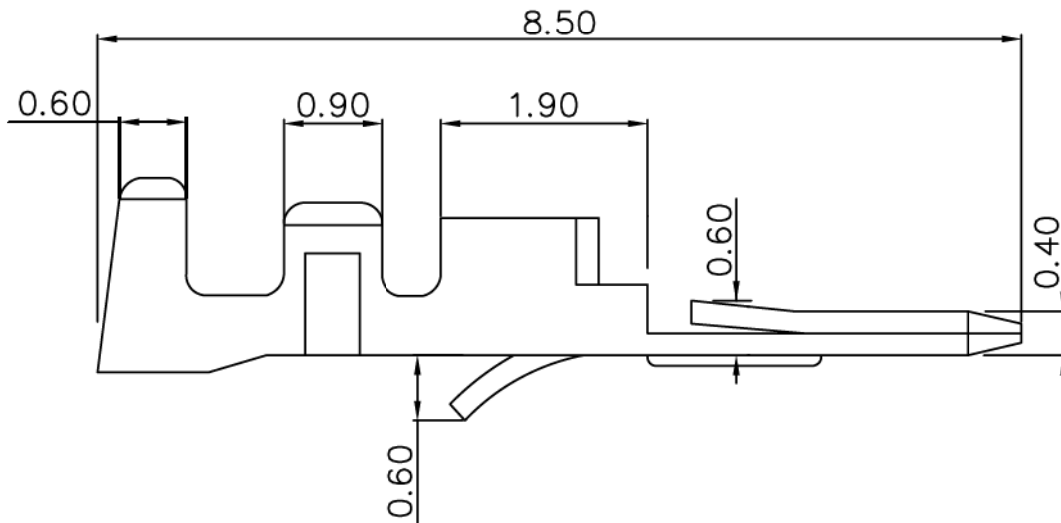


Material: Brass or phosphor bronze
 Current rating: 1A, AC/DC
 Voltage rating: 125V, AC/DC
 Applicable wire range: AWG#24-28



B-B



A-A

PART NO. PR-M-24

DWG NO. PR-M-24

FILE NO.

CHECKED BY CY

DRAWING BY

PROJECTION

TOLERANCES ARE

.X ± 0.3

.XX ±

.XXX ±

AWG

DESCRIP TION:				
	AREA	REVISIONS	HK	DATE

Allconnectors

www.allconnectors.eu | info@allconnectors.eu
 Tel. +49 (0)711 / 358 110 20 | Fax +49 (0)711 / 358 110 25

UNIT / mm

SCALE 1:1