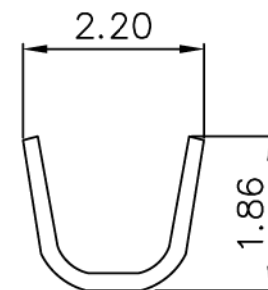
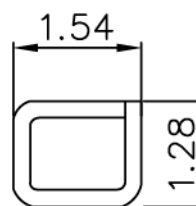
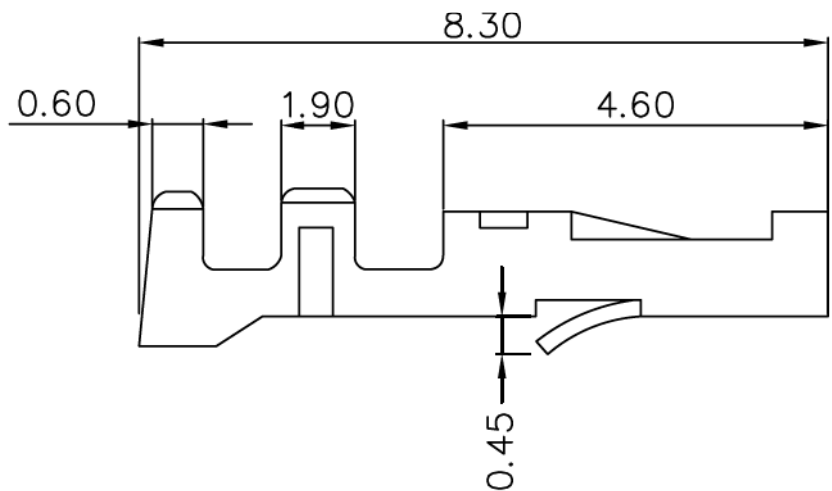
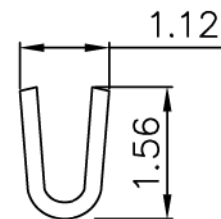
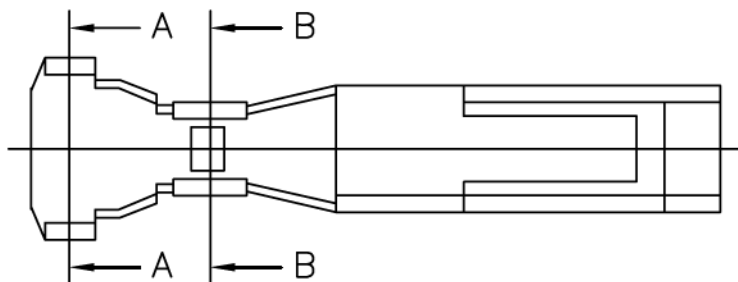


Material: Brass or phosphor bronze
 Current rating: 1A, AC/DC
 Voltage rating: 125V, AC/DC
 Applicable wire range: AWG#24–28



PART NO. PR-F-24		CHECKED BY CY		TOLERANCES ARE .X ± 0.3 .XX ± .XXX ± AWG	DESCRIP TION:			
DWG NO. PR-F-24		DRAWING BY			AREA	REVISIONS	HK	DATE
FILE NO.		PROJECTION						
UNIT / mm	SCALE 1:1							