

SPECIFICATIONS

Electrical

Voltage Rating: 100V AC, DC
 Current Rating: 2A AC, DC
 Withstand Voltage: 800V AC/ min
 Insulation Resistance: 1000M Ω / min
 Temperature Range: -25°C ~ +85°C

Material

Wafer: High Temperature Plastic Nylon 6T UL94V-0
 Pin: High Strength Brass With Tin Over Nickel Plated
 Applicable PC Board Thickness: 0.8 ~ 1.6mm
 Contact Resistance: Initial Value / 10m Ω max.
 After environmental testing 20m Ω max.

CKT.	A	B	C
2	2.00	7.90	4.80
3	4.00	9.90	6.80
4	6.00	11.90	8.80
5	8.00	13.90	10.80
6	10.00	15.90	12.80
7	12.00	17.90	14.80
8	14.00	19.90	16.80
9	16.00	21.90	18.80
10	18.00	23.90	20.80
11	20.00	25.90	22.80
12	22.00	27.90	24.80
13	24.00	29.90	26.80
14	26.00	31.90	28.80
15	28.00	33.90	30.80
16	30.00	35.90	32.80

PH-WR-xx-LF
 LEADFREE
 02~16WAY
 RoHS Compliant

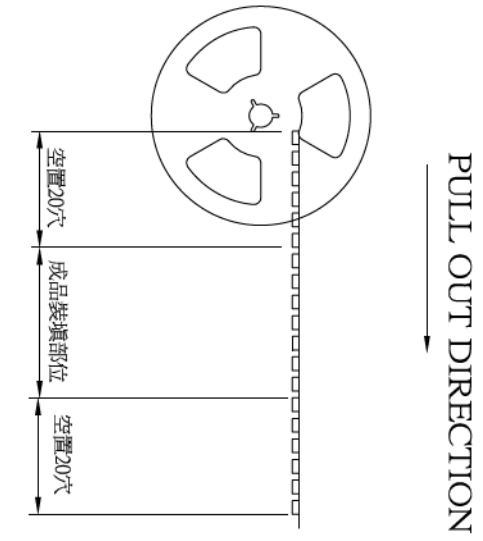
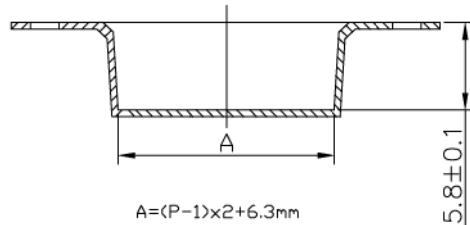
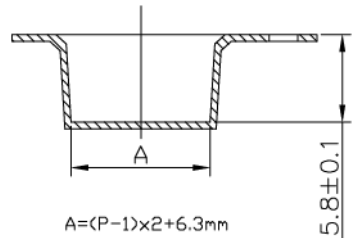
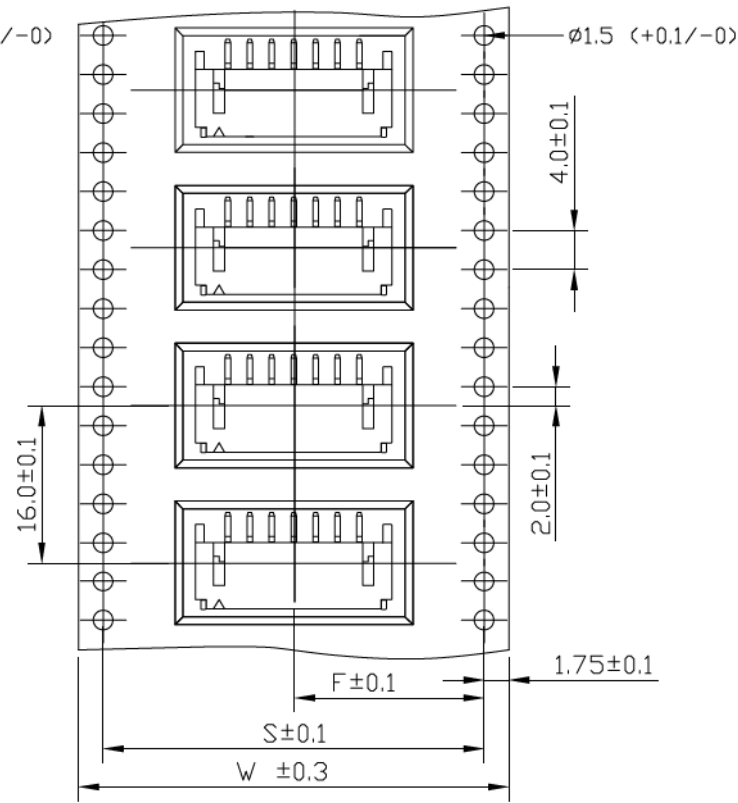
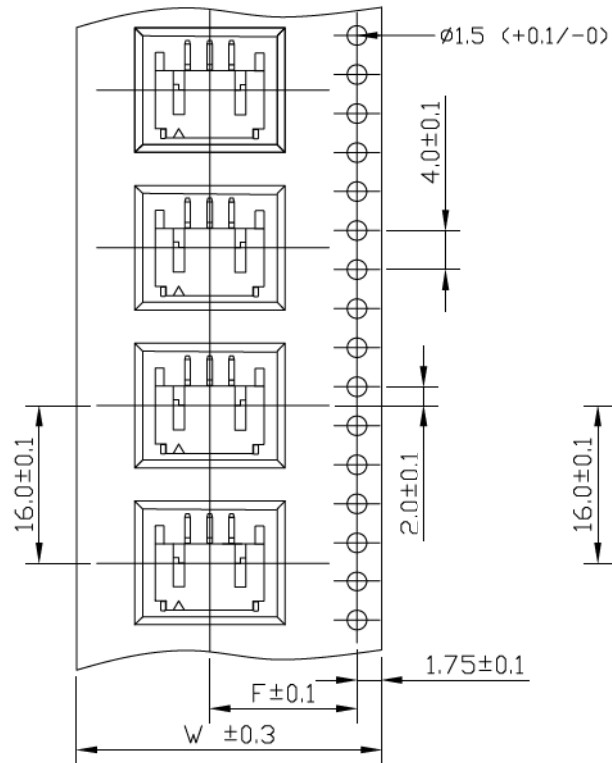
PART NO. PH-WR-xx		CHECKED BY CY		TOLERANCES ARE .X \pm 0.2 .XX \pm .XXX \pm AWG	DESCRIP TION: 2.0mm Wire-to-Board Header SMD 90° SM3 Type	AREA	REVISIONS	HK	DATE
DWG NO. PH-WR-xx		DRAWING BY							
FILE NO.		PROJECTION							
UNIT / mm		SCALE 1:1							

Allconnectors

www.allconnectors.eu | info@allconnectors.eu
 Tel. +49 (0)711 / 358 110 20 | Fax +49 (0)711 / 358 110 25

2-4P Contacts

5-16P Contacts



P=Poles	W	F	S	Q'TY/Reel
02	24	11.5		1000PCS
03	24	11.5		1000PCS
04	24	11.5		1000PCS
05	32	14.2	28.4	1000PCS
06	32	14.2	28.4	1000PCS
07	32	14.2	28.4	1000PCS
08	44	20.2	40.4	1000PCS
09	44	20.2	40.4	1000PCS
10	44	20.2	40.4	1000PCS
11	44	20.2	40.4	1000PCS
12	44	20.2	40.4	1000PCS
13	44	20.2	40.4	1000PCS
14	56	26.2	52.4	1000PCS
15	56	26.2	52.4	1000PCS
16	56	26.2	52.4	1000PCS

PART NO. PH-WR-xx		CHECKED BY CY		TOLERANCES ARE .X ± 0.2 .XX ± .XXX ± AWG	DESCRIP TION: 2.0mm Wire-to-Board Header SMT 90° Type Tape&Reel
DWG NO. PH-WR-xx		DRAWING BY			
FILE NO.		PROJECTION		AREA	REVISIONS
UNIT / mm	SCALE 1:1			HK	DATE