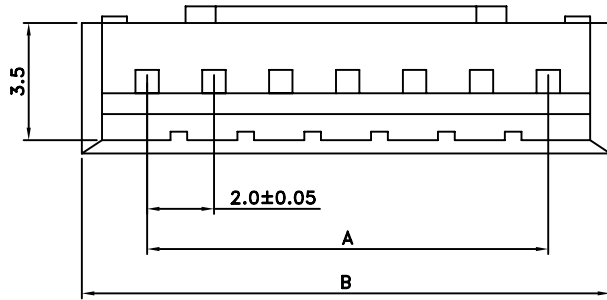
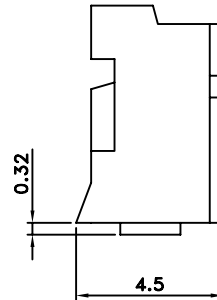
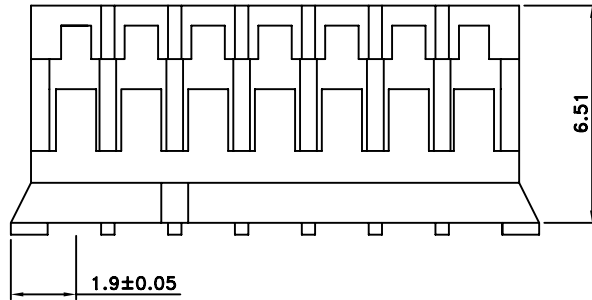


SPECIFICATION

CURRENT RATING: 2A AC,DC
 VOLTAGE RATING: 250V AC,DC
 TEMPERATURE RANGE: -25°C TO +85°C
 (INCLUDING TEMPERATURE RISE)
 CONTACT RESISTANCE: INITIAL VALUE/10M OHM MAX.
 AFTER ENVIRONMENTAL TESTING/20M OHM MAX.
 INSULATION RESISTANCE: 1,000M OHM MIN.
 WITHSTANDING VOLTAGE: 800V AC/MINUTE
 MATERIAL AND FINISH
 HOUSING: NYLON 66,UL94V-0



PH-H-xx-LF
 LEADFREE
 RoHS Compliant



CIRCUITS	DIM.A	DIM.B
2	2.00	5.80
3	4.00	7.80
4	6.00	9.80
5	8.00	11.80
6	10.00	13.80
7	12.00	15.80
8	14.00	17.80
9	16.00	19.80
10	18.00	21.80
11	20.00	23.80
12	22.00	25.80
13	24.00	27.80
14	26.00	29.80
15	28.00	31.80

PART NO. PH-H-xx		APPROVED BY CY		TOLERANCES ARE X. XX. XXX. AWG	DESCRIP TION: 2.0MM PITCH HOUSING		
DWG NO. PH-H-xx		DRAWING BY					
FILE NO.		PROJECTION		AREA	REVISIONS	HK	DATE
UNIT / mm	SCALE 1:1						



www.allconnectors.eu | info@allconnectors.eu
 Tel. +49 (0)711 / 358 110 20 | Fax +49 (0)711 / 358 110 25