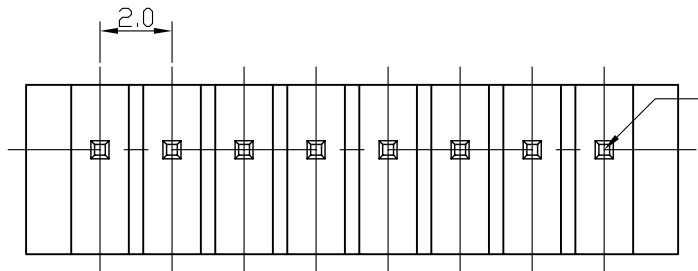
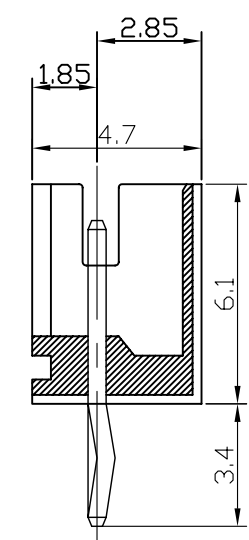
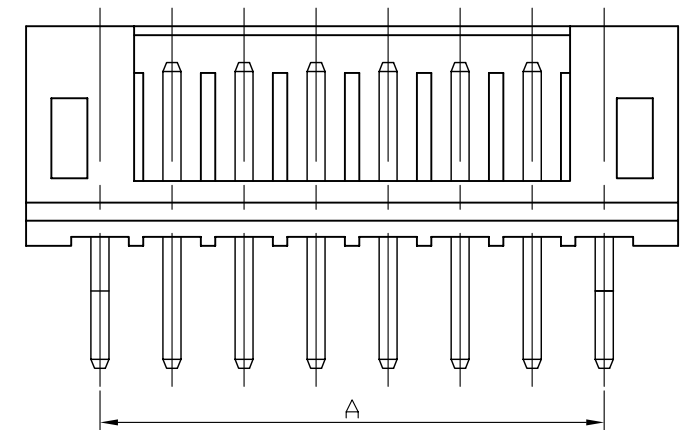


RECOMMENDED P.C. BOARD HOLE DIMM.



0.5mm Square Pin

### Specifications

#### Electrical

- Voltage Rating: 100V(AC)
- Current Rating: 2A
- Contact Resistance: 20m Ω max.
- Dielectric Withstandeing Voltage: 800V AC/1min.
- Insulation Resistance: 1000m Ω min.

#### Material

- Circuits: 2~16
- Insulator: Nylon 66 UL 94V-0
- Color: White or Natural
- Contact: Brass 0.50mm(0.20") Square Pin
- Plating: Tin or Gold Plated
- Temperature Range: -25° C~+85° C
- Applicable PC Board Thickness: 0.8 to 1.6mm

Poles	Dimension mm (in.)		Part No.	Note.
	A	B		
2	2.0(0.079)	6.1(0.240)	PH-D-02	
3	4.0(0.157)	8.1(0.318)	PH-D-03	
4	6.0(0.236)	10.1(0.397)	PH-D-04	
5	8.0(0.315)	12.1(0.476)	PH-D-05	
6	10.0(0.394)	14.1(0.555)	PH-D-06	
7	12.0(0.472)	16.1(0.634)	PH-D-07	
8	14.0(0.551)	18.1(0.713)	PH-D-08	
9	16.0(0.630)	20.1(0.791)	PH-D-09	
10	18.0(0.709)	22.1(0.870)	PH-D-10	
11	20.0(0.787)	24.1(0.949)	PH-D-11	
12	22.0(0.886)	26.1(1.028)	PH-D-12	
13	24.0(0.945)	28.1(1.106)	PH-D-13	
14	26.0(1.024)	30.1(1.185)	PH-D-14	
15	28.0(1.102)	32.1(1.263)	PH-D-15	
16	30.0(1.181)	34.1(1.343)	PH-D-16	

PH-D-xx-LF  
LEADFREE

RoHS Compliant

 www.allconnectors.eu   info@allconnectors.eu Tel. +49 (0)711 / 358 110 20   Fax +49 (0)711 / 358 110 25	PART NO. PH-D-xx		CHECKED BY CY	TOLERANCES ARE .X ± 0.2 .XX ± .XXX ± AWG	DESCRIP TION: 2.0mm Wire-to-Board Header DIP 180° Type		
	DWG NO. PH-D-xx					DRAWING BY	
	FILE NO.		PROJECTION	AREA	REVISIONS	HK	DATE
	UNIT / mm	SCALE 1 : 1					