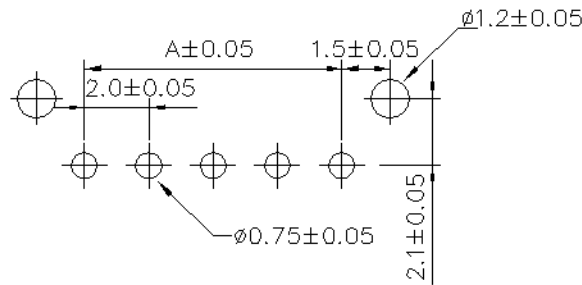
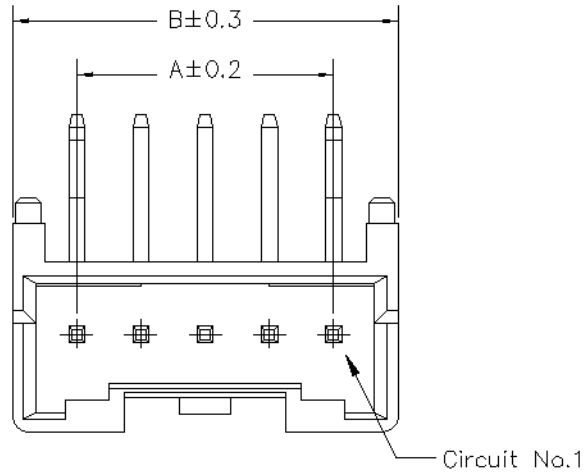
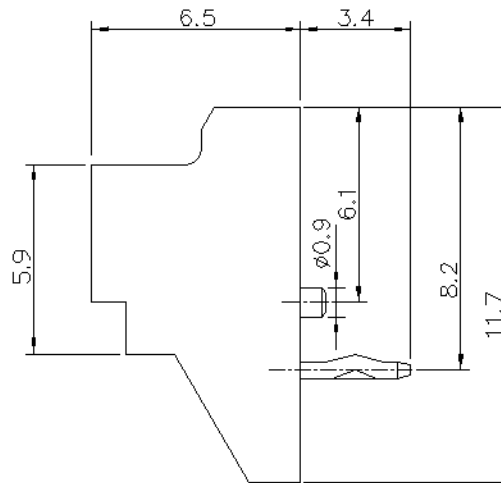
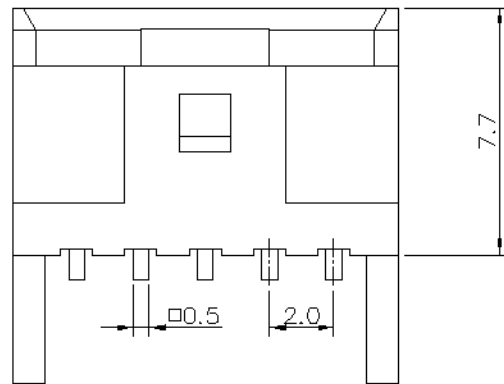


(2 to 9 circuits)



RECOMMENDED P.C. BOARD HOLE DIM.



Specifications

Current Rating: 3A AC/DC (Max)AWG#22
 Voltage Rating: 250V AC/DC
 Temperature Range: -25°C ~ +85°C
 Contact Resistance: 20mΩ Max
 Insulation Resistance: 1000MΩ Min
 Withstand Voltage:800V AC/Minute
 Pin Material: Brass/ Tin-plated
 Wafer Material: Glass-filled PBT,UL94V-0,natural

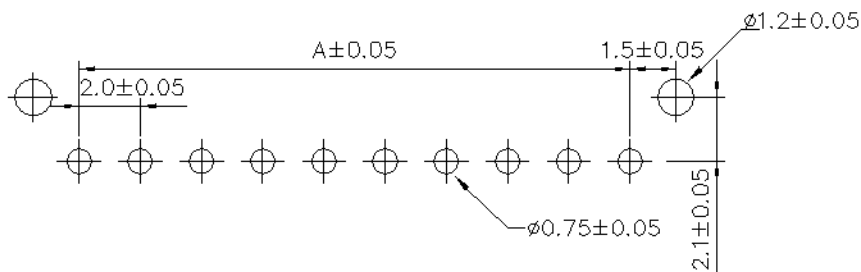
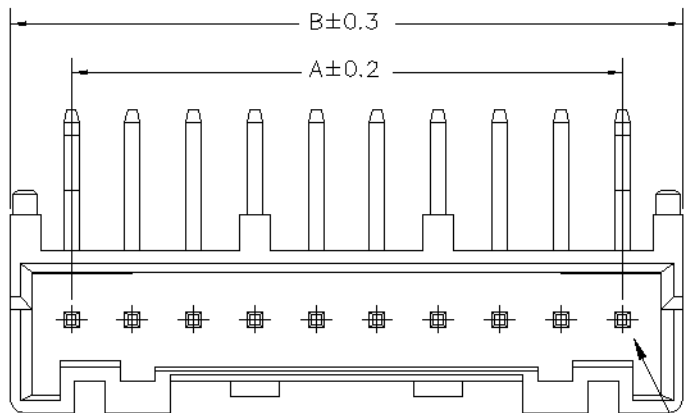
PA-RP-xx-LF
 LEADFREE

RoHS Compliant

Poles	Dimension mm (in.)		Part No.
	A	B	
2	2.0(0.079)	6.0(0.236)	PA-RP-02
3	4.0(0.157)	8.0(0.315)	PA-RP-03
4	6.0(0.236)	10.0(0.394)	PA-RP-04
5	8.0(0.315)	12.0(0.472)	PA-RP-05
6	10.0(0.394)	14.0(0.551)	PA-RP-06
7	12.0(0.472)	16.0(0.630)	PA-RP-07
8	14.0(0.551)	18.0(0.709)	PA-RP-08
9	16.0(0.630)	20.0(0.787)	PA-RP-09

<p>www.allconnectors.eu info@allconnectors.eu Tel. +49 (0)711 / 358 110 20 Fax +49 (0)711 / 358 110 25</p>	PART NO. PA-RP-xx		CHECKED BY CY	TOLERANCES ARE .X ± 0.2 .XX ± .XXX ± AWG	DESCRIPTION: 2.0mm Wire-to-Board Header DIP 90° Type	AREA	REVISIONS	HK	DATE	
	DWG NO. PA-RP-xx									DRAWING BY
	FILE NO.		UNIT / mm	SCALE 1:1	PROJECTION					

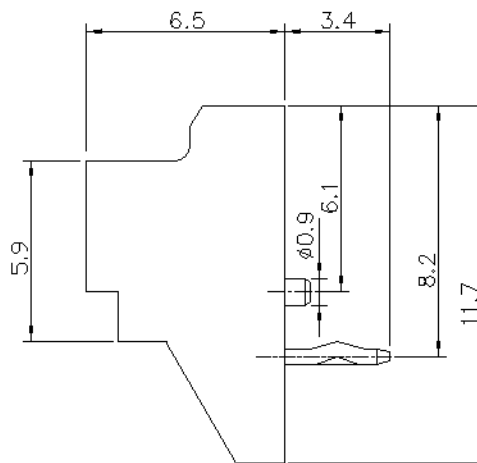
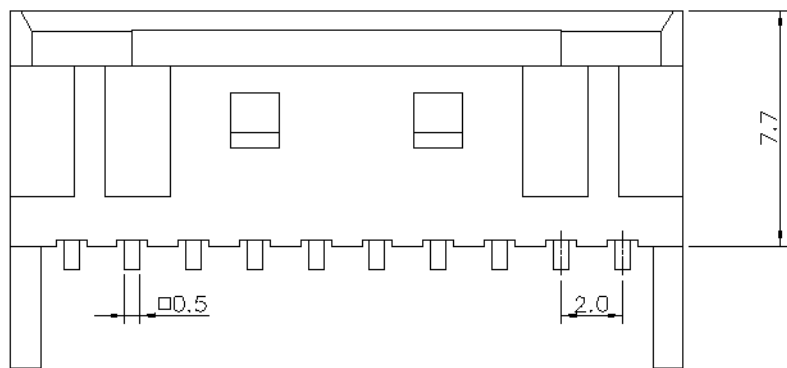
(10 to 15 circuits)



RECOMMENDED P.C.BOARD HOLE DIMM.

Specifications

Current Rating: 3A AC/ DC (Max)AWG#22
 Voltage Rating: 250V AC/ DC
 Temperature Range: -25°C ~ + 85°C
 Contact Resistance: 20mΩ Max
 Insulation Resistance: 1000MΩ Min
 Withstand Voltage:800V AC/Minute
 Pin Material: Brass/ Tin-plated
 Wafer Material: Glass-filled PBT,UL94V-0,natural



PA-RP-xx-LF
 LEADFREE
 RoHS Compliant

Poles	Dimension mm (in.)		Part No.
	A	B	
10	18.0(0.709)	22.0(0.866)	PA-RP-10
11	20.0(0.787)	24.0(0.945)	PA-RP-11
12	22.0(0.866)	26.0(1.024)	PA-RP-12
13	24.0(0.945)	28.0(1.102)	PA-RP-13
14	26.0(1.024)	30.0(1.181)	PA-RP-14
15	28.0(1.102)	32.0(1.260)	PA-RP-15

<p>www.allconnectors.eu info@allconnectors.eu Tel. +49 (0)711 / 358 110 20 Fax +49 (0)711 / 358 110 25</p>	PART NO. PA-RP-xx		CHECKED BY CY	TOLERANCES ARE .X ± 0.2 .XX ± .XXX ± AWG	DESCRIPTION: 2.0mm Wire-to-Board Header DIP 90° Type	AREA	REVISIONS	HK	DATE	
	DWG NO. PA-RP-xx									DRAWING BY
	FILE NO.		PROJECTION							
	UNIT / mm	SCALE 1:1								