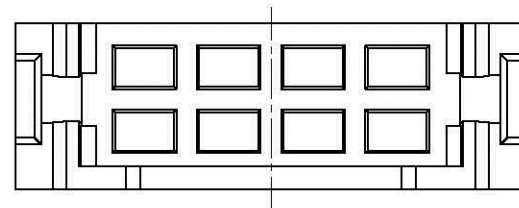
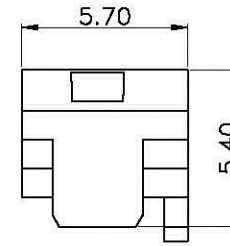
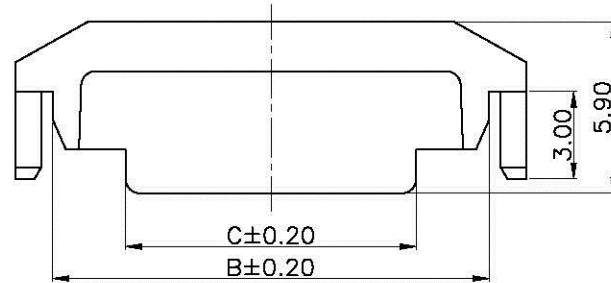
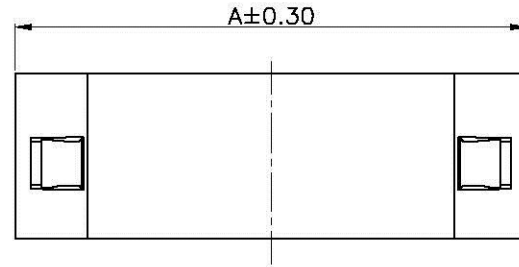


This document is the property of Targ Yu Enterprise and is delivered on the express condition that it is not to be disclosed, reproduced or used, in whole or in part, for manufacture or sale by anyone other than Targ Yu Enterprise without its prior consent, and that no right is granted to disclose or to use any information in this document.

Engineer Drawing

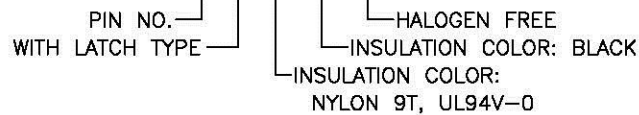
REV	ECN NO.	DESCRIPTION	DATE	APP'D
A/0	N/A	NEW DRAWING	06/17/13	Paul
A/1	N/A	ADD 2x05,15,20 PIN SPECIFICATION	01/04/14	Paul
A/2	ECN-EN-2014021	AMEND PRODUCTION	04/01/14	Paul



PIN	DIM.(mm)		
	A	B	C
2x05	11.35	8.75	3.75
2x10	17.60	15.00	10.00
2x15	23.85	21.25	16.25
2x20	30.10	27.50	22.50

NOTES:

- MATERIAL(HALOGEN FREE): NYLON 9T, UL94V-0 (BLACK)
- MATES WITH: TU1257 SERIES HOUSING
- ORDERING CODE: TU1257CNO-2xNPK-M7-C1-NL



TOLERANCE		APPROVALS		DATE	All Connectors	
X.X	±0.25	DRAWN	<i>Lwen Kong</i>	04/01/14	www.allconnectors.de	Info@allconnectors.de
X.XX	±0.15	CHK'D	<i>Paul Chen</i>	04/01/14	TEL: 0049 711 7007503	Fax: 0049 711 7007504
ANGULA	3°	APP'D	<i>Wayne Lai</i>	04/01/14	70704 Rilderstadt - Germany	Kettenerstr. 25
UNLESS OTHERWISE SPECIFIED		UNITS mm	SCALE 1:1	SIZE: A4	PART NO. TU1257CNO-2xNPK-M7-C1-NL	
					DRAWING NO. EN-TU1257CNO-2xNPK-M7-C1-NL	
					TITLE: WIRE TO BOARD PITCH 1.25mm, INSULATOR	
					SHEET 1 OF 1	
					REV. A/2	