


RECOMMENDED P.C. BOARD PATTERN DIM.

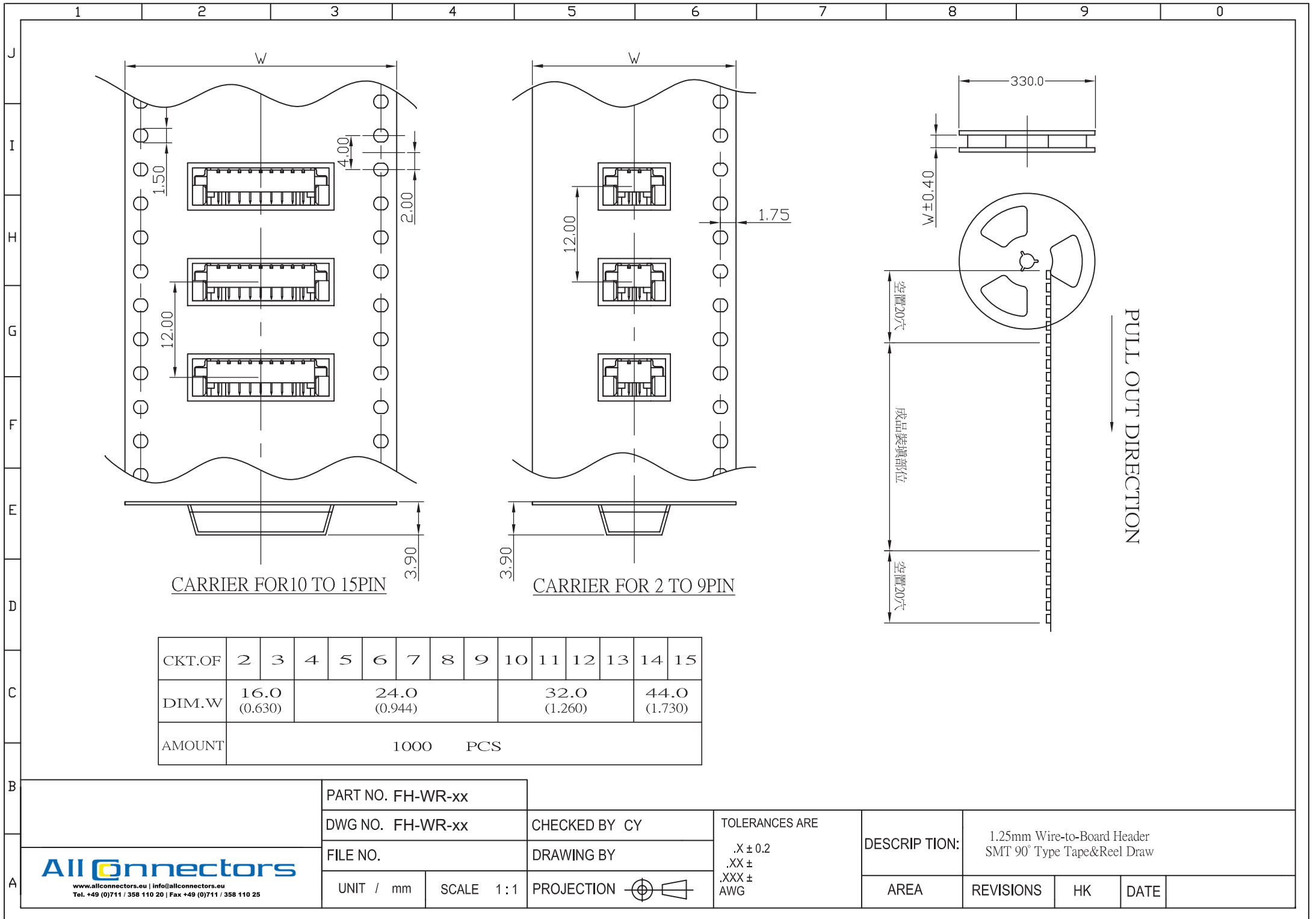
FH-WR-xx-LF
LEADFREE
RoHS Compliant

CKT.	A	B	C	D
2	1.25	3.05	4.25	7.65
3	2.50	4.30	5.50	8.90
4	3.75	5.55	6.75	10.15
5	5.00	6.80	8.00	11.40
6	6.25	8.05	9.25	12.65
7	7.50	9.30	10.50	13.90
8	8.75	10.56	11.75	15.15
9	10.00	11.80	13.00	16.40
10	11.25	13.05	14.25	17.65
11	12.50	14.30	15.50	18.90
12	13.75	15.55	16.75	20.15
13	15.00	16.80	18.00	21.40
14	16.25	18.05	19.25	22.65
15	17.50	19.30	20.50	23.90



MATERIAL:
 WAFER:HIGH TEMPERA TURE PLASTIC
 NYLON46 UL94V-0
 PIN:HIGH STRENGTH BRASS
 WITH TIN OVER NICKEL PLATED

SPECIFICATION:
 CURRENT RATE: 1 AMP
 IUSULATION RESISTANCE: 500 M MIN
 CONTACT RESISTANCE: 20 M MAX
 DIELECTRIC VOLTAGE: 500 V AC FOR ONE MINUTE
 OPERATION TEMPERATURE: -25°C TO +85°C

PART NO. FH-WR-xx		APPROVED BY CY		TOLERANCES ARE		DESCRIP TION: WIRE TO BOARD 1.25mm WAFER SMT R/A			
DWG NO. FH-WR-xx		DRAWING BY		.X ± 0.5 .XX ± 0.1 .XXX AWG		AREA			
FILE NO.		PROJECTION 		REVISIONS					
UNIT / mm	SCALE 1:1								



CKT.OF	2	3	4	5	6	7	8	9	10	11	12	13	14	15
DIM.W	16.0 (0.630)				24.0 (0.944)			32.0 (1.260)			44.0 (1.730)			
AMOUNT	1000 PCS													

 <small>www.allconnectors.eu info@allconnectors.eu Tel. +49 (0)711 / 358 110 20 Fax +49 (0)711 / 358 110 25</small>		PART NO. FH-WR-xx		TOLERANCES ARE .X ± 0.2 .XX ± .XXX ± AWG		DESCRIPTION: 1.25mm Wire-to-Board Header SMT 90° Type Tape&Reel Draw	
		DWG NO. FH-WR-xx					
UNIT / mm		SCALE 1:1		DRAWING BY		AREA	
PROJECTION 						REVISIONS	
						HK	
						DATE	