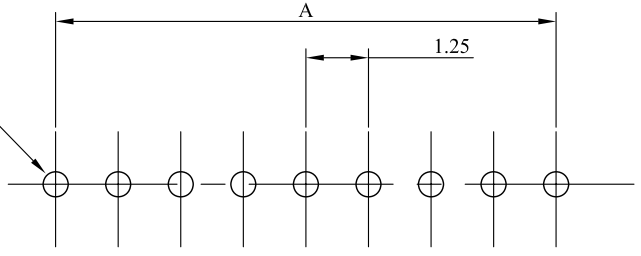
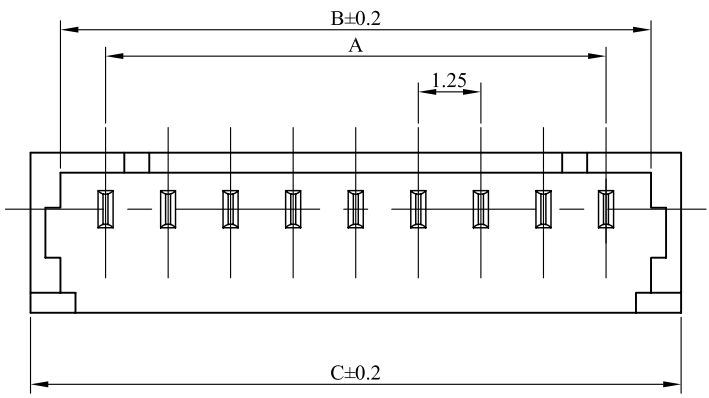


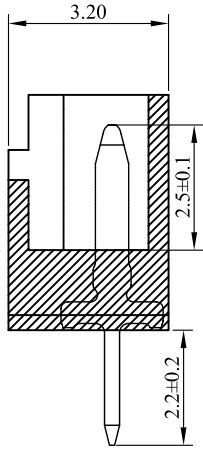
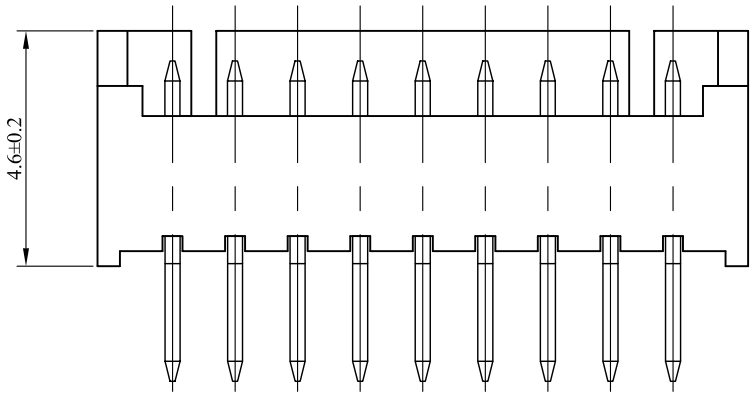
1 2 3 4 5 6 7 8 9 0

J
I
H
G
F
E
D
C
B
A



RECOMMENDED PC BOARD HOLE DIMM.

LOCKING WINDOW:
ONE PLACE FOR 2 AND 3 CKT.
AND TWO PLACES FOR MORE THAN 3 CKT.



MATERIAL:

WAFER:HIGH TEMPERA TURE PLASTIC
NYLON46 UL94V-0
PIN:HIGH STRENGTH BRASS
WITH TIN OVER NICKEL PLATED

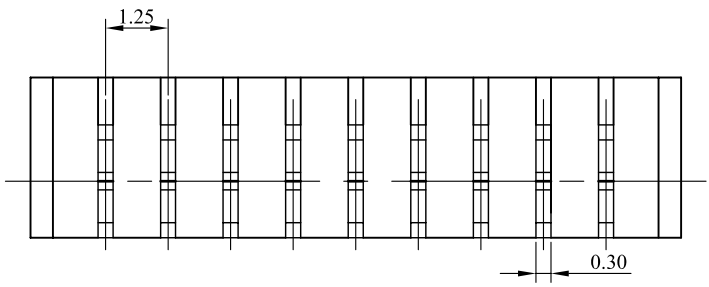
SPECIFICATION:

CURRENT RATE: 1 AMP
IUSULATION RESISTANCE: 500 M MIN
CONTACT RESISTANCE: 20 M MAX
DIELECTRIC VOLTAGE: 500 V AC FOR ONE MINUTE
OPERATION TEMPERATURE: -25°C ~ +85°C

CKT.	A	B	C
2	1.25	3.15	4.25
3	2.50	4.40	5.50
4	3.75	5.65	6.75
5	5.00	6.90	8.00
6	6.25	8.15	9.25
7	7.50	9.40	10.50
8	8.75	10.65	11.75
9	10.00	11.90	13.00
10	11.25	13.15	14.25
11	12.50	14.40	15.50
12	13.75	15.65	16.75
13	15.00	16.90	18.00
14	16.25	18.15	19.25
15	17.50	19.40	20.50

FH-D-xx-LF
LEADFREE

RoHS Compliant



PART NO. FH-D-xx		APPROVED BY CY		TOLERANCES ARE		DESCRIP TION:		WIRE TO BOARD 1.25mm WAFER DIP 180°	
DWG NO. FH-D-xx		DRAWING BY		.X ± 0.5 .XX ± 0.1 .XXX AWG		AREA		REVISIONS	
FILE NO.		PROJECTION				REVISIONS		DATE	
UNIT / mm		SCALE 1:1				HK			