

ORDERING INFORMATION

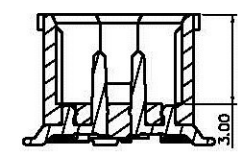
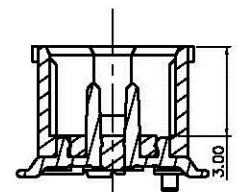
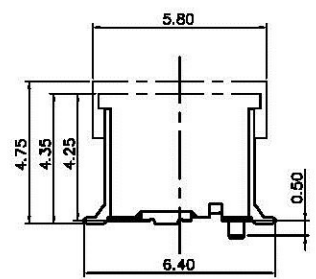
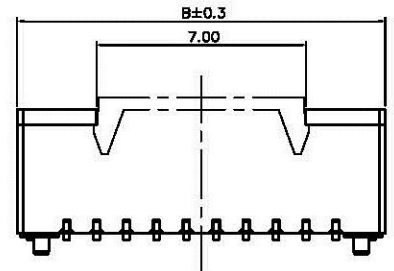
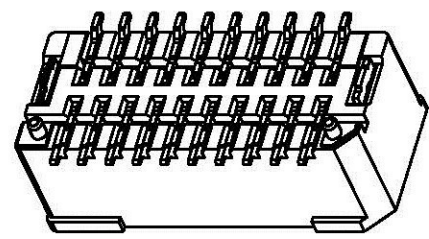
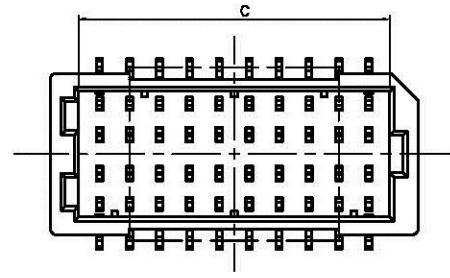
WB 1003USA - XX X 5 X - X  
 (1) (2) (3) (4)(5) (6) (7)

- SERIES NO.  
WB: WIRE TO BOARD SERIES
- WAFER TYPE  
1003USA: 1.0MM PITCH 180° DUAL ROW WAFER
- NUMBER OF PIN  
XX: XX POSITIONS
- CONTACT PLATING  
T: TIN 3: 10u'GOLD  
G: G/F 4: 15u'GOLD  
1: 3u'GOLD 5: 30u'GOLD  
2: 5u'GOLD
- HOUSING COLOR CODES AND MATERIAL  
5: PA9T AND WHITE
- SUFFIX NO.1  
A: HOUSING WITH PLOES  
NONE: HOUSING WITHOUT PLOES
- SUFFIX NO.2  
1: WITH COVER  
2: WITH MYLAR  
NONE: WITHOUT COVER

MATERIAL SPECIFICATION:

- HOUSING:PA9T (UL94V-0) COLOR:WHITE
  - CONTACT:COPPER ALLOY
  - NAIL:COPPER ALLOY
- ELECTRICAL PERFORMANCE
- RATED VOLTAGE(MAX.):50V AC/DC
  - DIELECTRIC STRENGTH:250V AC FOR 1 MINUTE BETWEEN ADJACENT TERMINAL, NO BREAKDOWN
  - INSULATION RESISTANCE:100 MEGOHMS MIN. 250V DC FOR 1 MINUTE BETWEEN ADJACENT TERMINAL
  - OPERATING TEMPERATURE:-25° to +85°

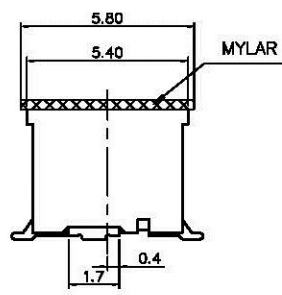
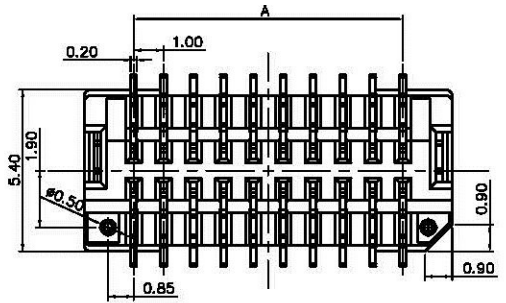
CKT	A	B	C
10	4.0	7.3	5.4
12	5.0	8.3	6.4
16	7.0	10.3	8.4
18	8.0	11.3	9.4
20	9.0	12.3	10.4
24	11.0	14.3	12.4
30	14.0	17.3	15.4
34	16.0	19.3	17.4
40	19.0	22.3	20.4
50	24.0	27.3	25.4
60	29.0	32.3	30.4



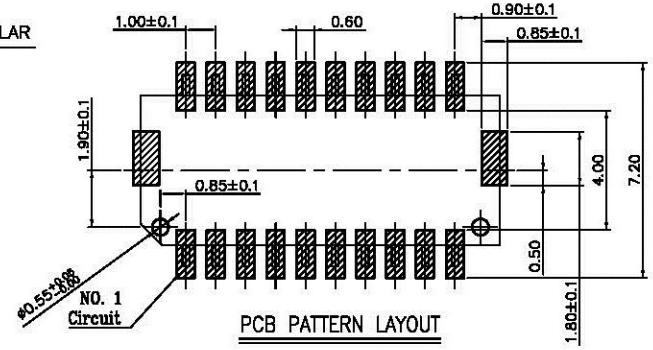
WITH COVER

WITH PLOES

WITHOUT PLOES



10,12 Pin - Mylar



PCB PATTERN LAYOUT

5				DRAWING:
4				<i>Match</i>
3				CHECKED:
2				<i>Fahr</i>
1				APPROVAL:
NO.	DATE	DESCRIPTION	APPROVAL	<i>Felix</i>

GENERAL TOLERANCE	
.X:±0.40	.X°:±2°
.XX:±0.20	.XX°:±1°
.XXX:±0.10	.XXX°:±0.5°
UNIT: MM	PROJECTION:
SCALE: 1/1	
SHEET: 1/1	

**Allconnectors**

www.allconnectors.de  
 Tel.: 0049 711 7009503  
 70734 Filderstadt - Germany

info@allconnectors.de  
 Fax: 0049 711 7009504  
 Kettelerstr. 25

DESCRIPTION:  
 1.0mm pitch vertical dual row wafer

PART NO:	WB1003USA-XXX5X-X	REV: 1.0
DRAWING NO:	P1-WB1003USA-01	SIZE: A4