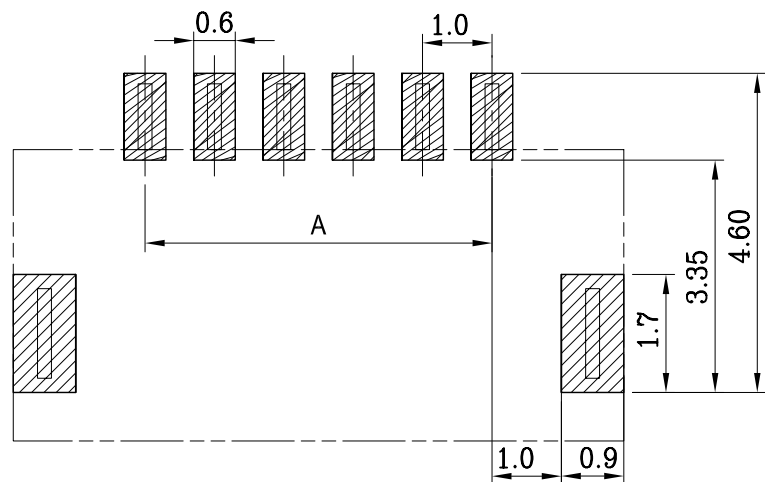


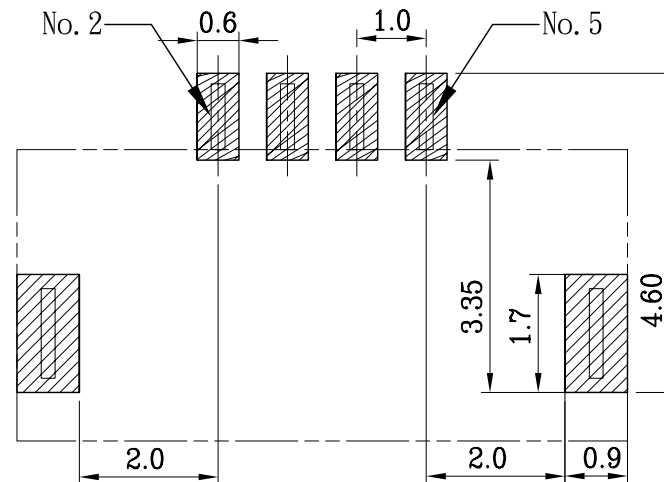
- NOTES:
 1. MATERIAL:
 1.1 HOUSING: THERMOPLASTIC, HIGH TEMP., UL94V-0; COLOR: Natural.
 1.2 CONTACT: COPPER ALLOY
 1.3 FITTING NAIL: COPPER ALLOY
 2. FINISH:
 2.1 CONTACT: "PER MTA PLATING CODE"
 2.2 FITTING NAIL: "PER MTA PLATING CODE"
 3. REFLOW SOLDER CAPABLE TO 260°C

SHL-W-xx-LF
 LEADFREE
 02~30WAY

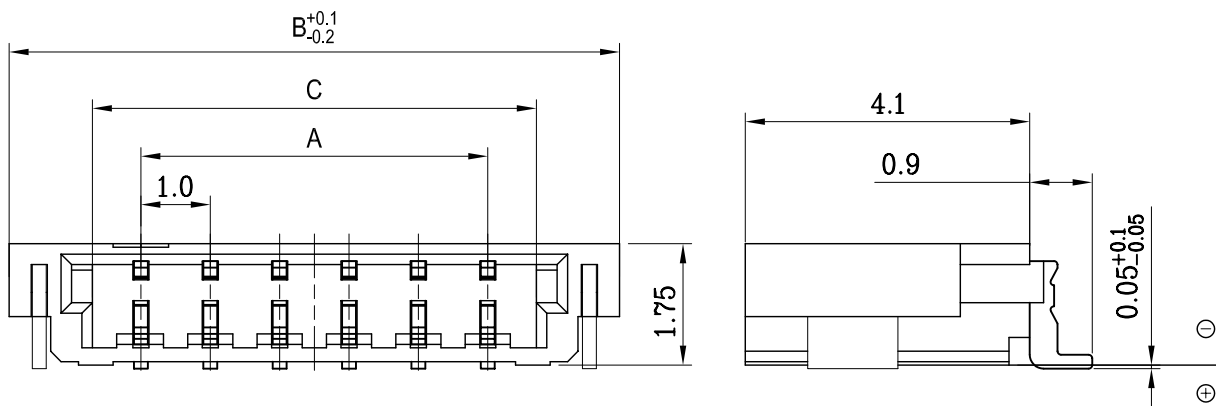
RoHS Compliant



SHL-W-xx
 P.C. BOARD LAYOUT



SHL-W-06EC Void No.1 & No.6
 P.C. BOARD LAYOUT REF.



CKTS	DIM A	DIM B	DIM C	CKTS	DIM A	DIM B	DIM C
2	1.00	4.80	2.40	16	15.00	18.80	16.40
3	2.00	5.80	3.40	17	16.00	19.80	17.40
4	3.00	6.80	4.40	18	17.00	20.80	18.40
5	4.00	7.80	5.40	19	18.00	21.80	19.40
6	5.00	8.80	6.40	20	19.00	22.80	20.40
4	5.00	8.80	6.40	21	20.00	23.80	21.40
7	6.00	9.80	7.40	22	21.00	24.80	22.40
8	7.00	10.80	8.40	23	22.00	25.80	23.40
9	8.00	11.80	9.40	24	23.00	26.80	24.40
10	9.00	12.80	10.40	25	24.00	27.80	25.40
11	10.00	13.80	11.40	26	25.00	28.80	26.40
12	11.00	14.80	12.40	27	26.00	29.80	27.40
13	12.00	15.80	13.40	28	27.00	30.80	28.40
14	13.00	16.80	14.40	29	28.00	31.80	29.40
15	14.00	17.80	15.40	30	29.00	32.80	30.40

PART NO. SHL-W-xx

DWG NO. SHL-W-xx

CHECKED BY CY

TOLERANCES ARE

FILE NO.

DRAWING BY

.X ± 0.2

DESCRIPTION: 1.0mm pitch WTB Wafer
 SMT R/A S/R TYPE

UNIT / mm

SCALE 1:1

PROJECTION

.XX ± 0.1
 .XXX ± AWG

AREA	REVISIONS	HK	DATE
------	-----------	----	------