

RECOMMENDED P.C. BOARD PATTERN DIM.

## Specifications

### Electrical

Voltage Rating: 50V(AC)  
 Current Rating: 1.0A  
 Contact Resistance: 20mΩ max.  
 Dielectric Withstanding Voltage: 500V AC/1min.  
 Insulation Resistance: 100M Ω min.

### Material and Finish

Circuits: 2~16P&20P  
 Insulator: High Temperature Plastic UL94V-0  
 Color: Natural  
 Contact: Phosphor Bronze, Tin-Plated  
 Plating: Tin /lead-plated  
 Temperature Range: -40°C~+105°C

Poles	Dimension mm (in.)		Part No.	Note.
	A	B		
2	1.0(0.039)	4.0(0.157)	SH-VR-02	
3	2.0(0.079)	5.0(0.197)	SH-VR-03	
4	3.0(0.118)	6.0(0.236)	SH-VR-04	
5	4.0(0.157)	7.0(0.276)	SH-VR-05	
6	5.0(0.197)	8.0(0.315)	SH-VR-06	
7	6.0(0.236)	9.0(0.354)	SH-VR-07	
8	7.0(0.276)	10.0(0.394)	SH-VR-08	
9	8.0(0.315)	11.0(0.433)	SH-VR-09	
10	9.0(0.354)	12.0(0.472)	SH-VR-10	
11	10.0(0.394)	13.0(0.512)	SH-VR-11	
12	11.0(0.433)	14.0(0.551)	SH-VR-12	
13	12.0(0.472)	15.0(0.591)	SH-VR-13	
14	13.0(0.512)	16.0(0.630)	SH-VR-14	
15	14.0(0.551)	17.0(0.669)	SH-VR-15	
16	15.0(0.590)	18.0(0.708)	SH-VR-16	
20	19.0(0.748)	22.0(0.866)	SH-VR-20	

RoHS Compliant

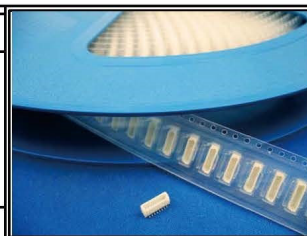
**All Connectors**

www.allconnectors.de info@allconnectors.de  
 Tel.: 0049 711 7009503 Fax: 0049 711 7009504  
 70794 Filderstadt - Germany Kettenerstr. 25

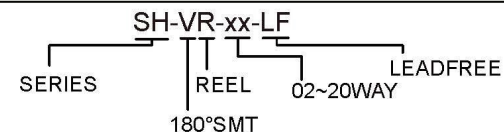
DRAWING BY CY  
 CHECKED BY GENIUS  
 UNIT/ mm SCALE 1 : 1  
 DATE  
 SIZE A4 PROJECTION

TOLERANCES ARE

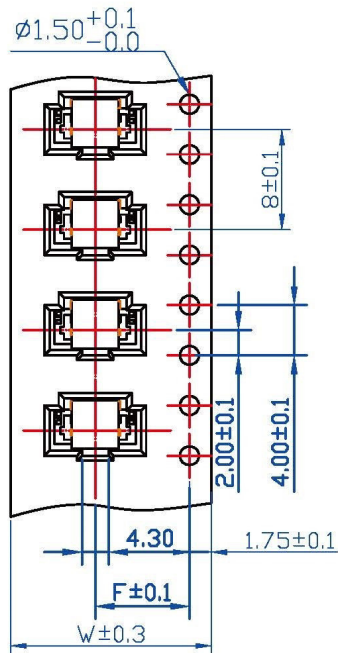
X ±  
 X ±  
 .XX ±  
 .XXX ±  
 ANG ±



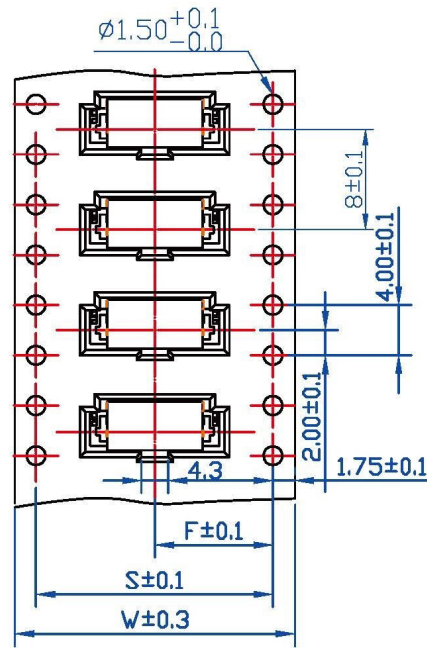
ORDER INFORMATION



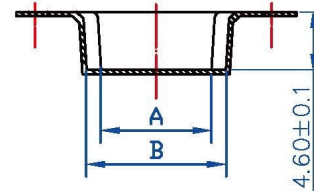
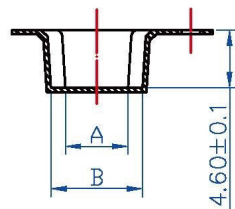
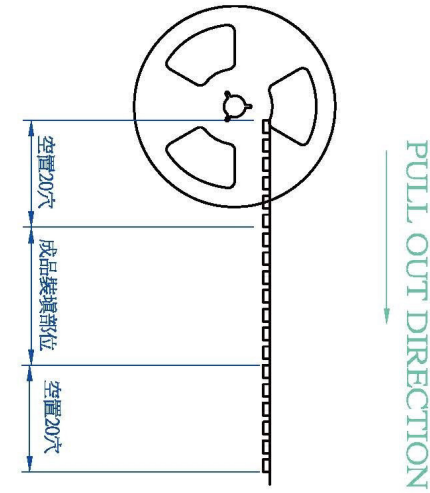
DESCRIPTION: 1.0mm Wire-to-Board Wafer SMT Top Entry



2~13P Contacts



14~16P&20P Contacts



$A = 1.0 \times \text{Poles}$

$B = (1.0 \times \text{Poles}) + 2.3 \text{mm}$

Poles	W	F	S	Q'TY/Reel
02	16.0	7.5		1000PCS
03	16.0	7.5		1000PCS
04	16.0	7.5		1000PCS
05	16.0	7.5		1000PCS
06	24.0	11.5		1000PCS
07	24.0	11.5		1000PCS
08	24.0	11.5		1000PCS
09	24.0	11.5		1000PCS
10	24.0	11.5		1000PCS
11	24.0	11.5		1000PCS
12	24.0	11.5		1000PCS
13	24.0	11.5		1000PCS
14	32.0	14.2	28.4	1000PCS
15	32.0	14.2	28.4	1000PCS
16	32.0	14.2	28.4	1000PCS
20	44.0	20.2	40.4	1000PCS

**All Connectors**

www.allconnectors.de  
Tel.: 0049 711 7009503  
70794 Filderstadt - Germany

info@allconnectors.de  
Fax: 0049 711 7009504  
Kettnerstr. 25

**RoHS Compliant**

DRAWING BY CY  
CHECKED BY GENIUS  
UNIT/ mm SCALE 1:1  
DATE  
SIZE A4

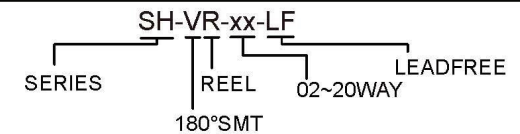
TOLERANCES ARE

X ±  
.X ±  
.XX ±  
.XXX ±  
ANG ±

PJECTION



ORDER INFORMATION



DESCRIPTION: 1.0mm Wire-to-Board Wafer SMT Top Entry