

1 2 3 4 5 6 7 8 9 0

J

I

H

G

F

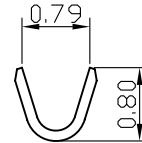
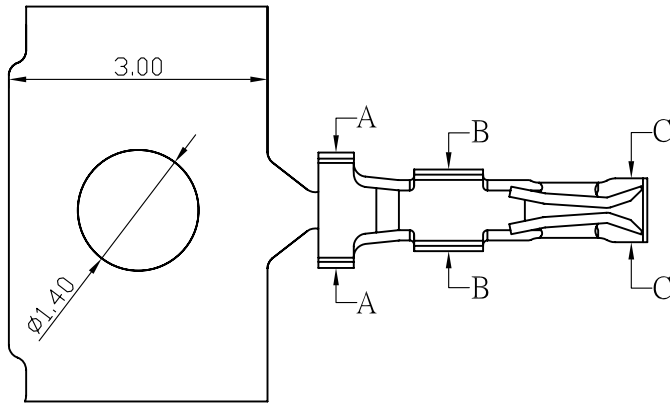
E

D

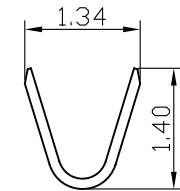
C

B

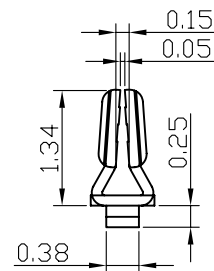
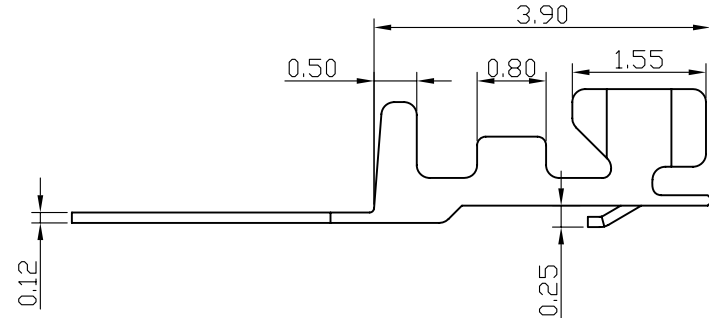
A



Section A-A



Section B-B



Section C-C

**SPECIFICATIONS**


Electrical  
 Current Rating: 1A AC, DC  
 Voltage Rating: 50V AC/ max.  
 Operating Temp.: -25°C ~ +85°C  
 Insulation Resistance: 100MΩ/ min.  
 Dielectric Withstanding Voltage: 500V AC/ min.  
 Contact Resistance: 20MΩ/ max.

Material  
 Terminal maetrial: Phosphor Bronze/ Tin-plated  
 Wire Range: 28 to 32AWG

SH-T-28-LF  
 T  
 LEADFREE

RoHS Compliant

**All Connectors**  
 www.allconnectors.eu | info@allconnectors.eu  
 Tel. +49 (0)711 / 358 110 20 | Fax +49 (0)711 / 358 110 25

PART NO. SH-T-28		APPROVED BY CY		TOLERANCES ARE		DESCRIP TION:				
DWG NO. SH-T-28		DRAWING BY		.X .XX .XXX AWG						
FILE NO.		PROJECTION 		AREA	REVISIONS	HK	DATE			
UNIT / mm	SCALE 1:1									