

NOTES:

1. MATERIAL: INSULATOR: LCP UL94V-0  
CONTACT: PHOSPHOR BRONZE  
SHELL: Ni-Ag ALLOY
2. CONTACT FINISH: 0. WITHOUT PLATING.
  1. 5u" MIN. GOLD ON CONTACT. TIN ON SOLDER TAIL. BOTH OVER NICKEL.(LEADFREE MATTE)
  2. 15u" MIN. GOLD ON CONTACT. TIN ON SOLDER TAIL. BOTH OVER NICKEL.(LEADFREE MATTE)
3. IMPORTANT AREA FLASH: 0.05mm MAX. DAMAGE: NA. DEFORM: NA.
4. LOGO TYPE: 2. WITHOUT LOGO
5. PACKING TYPE: 1. REEL 2. TRAY 3. TUBE

0.10 SOLDER AREA

FIX-WXF10AR-30-LF  
LEADFREE

RoHS Compliant

PART NO. FIX-WXF10AR-30		CHECKED BY CY		TOLERANCES ARE		DESCRIP TION:	
DWG NO. FIX-WXF10AR-30		DRAWING BY		.X ± 0.2			
FILE NO.		PROJECTION		.XX ± 0.1			
UNIT / mm	SCALE 1:1			.XXX ± AWG		AREA	REVISIONS
						HK	DATE

1 2 3 4 5 6 7 8 9 0

J

I

H

G

F

E

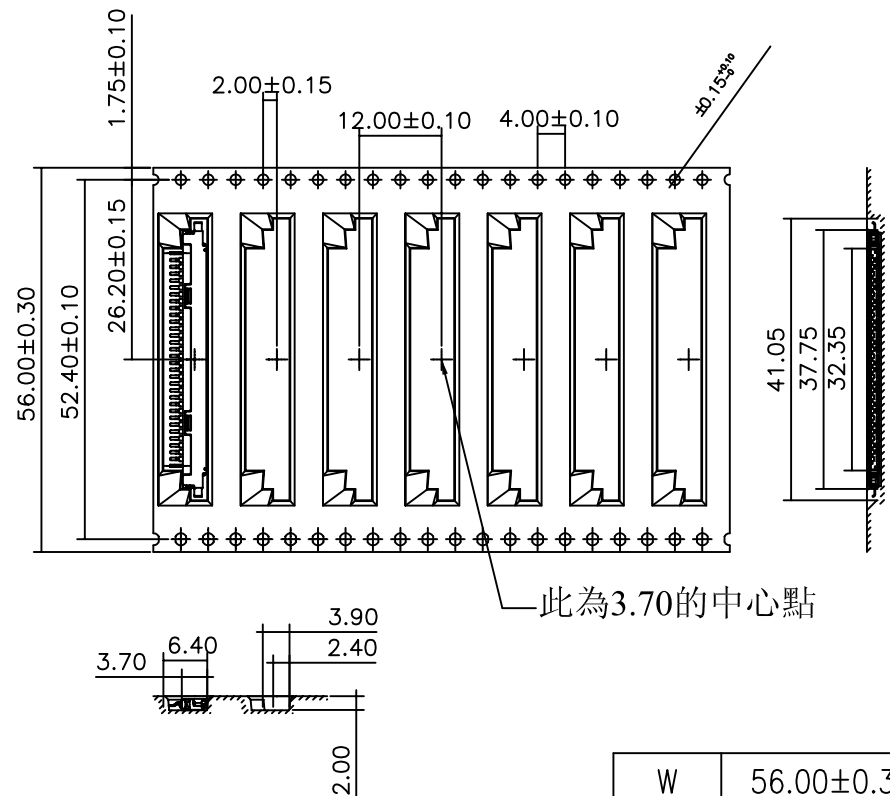
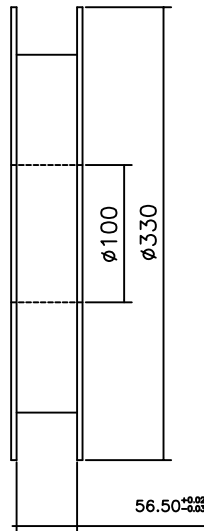
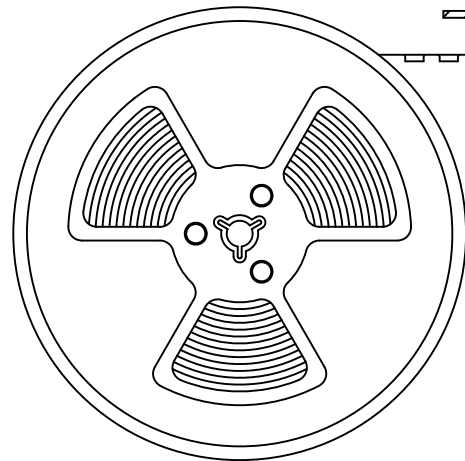
D

C

B

A

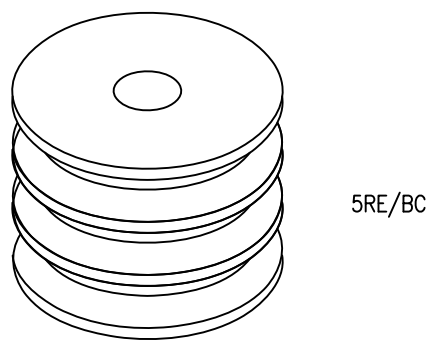
PULL OUT DIRECTION



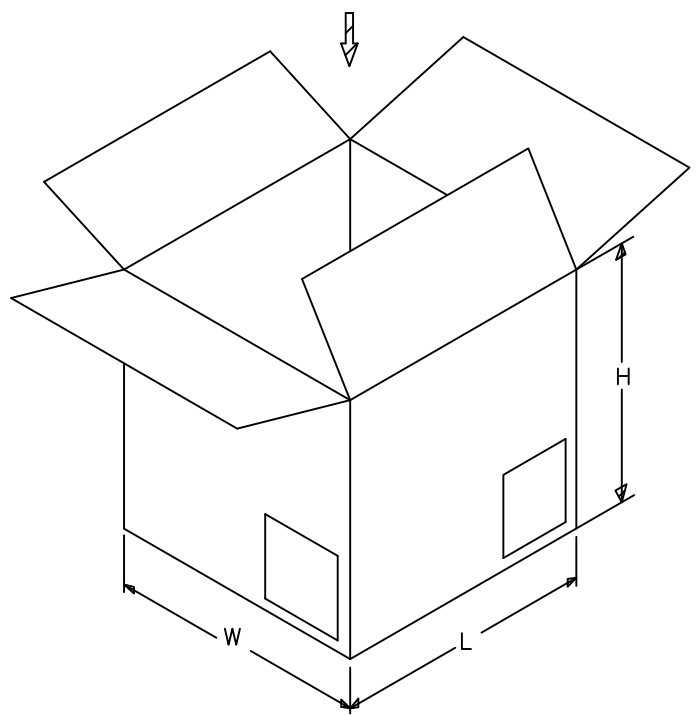
1. 10 sprocket hole pitch cumulative tolerance  $\pm 0.20$ .
2. Carrier camber is within 1 mm in 250 mm.
3. Material : Black Conductive Polystyrene Alloy
4. All dimensions meet EIA-481-B requirements.
5. Thickness :  $0.30 \pm 0.05$ mm.
6. Component load per 13" reel : 2500 pcs.

W	56.00±0.30
A0	3.70±0.10
B0	37.75±0.10
K0	2.00±0.10

PART NO. FIX-WXF10AR-30		CHECKED BY CY		TOLERANCES ARE .X ± 0.2 .XX ± 0.1 .XXX ± AWG	DESCRIP TION:			
DWG NO. FIX-WXF10AR-30		DRAWING BY						
UNIT / mm		SCALE 1:1		PROJECTION	AREA	REVISIONS	HK	DATE



5RE/BC

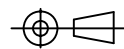


PCAKING MATERIAL

PART NAME	DIM(mm)
REEL	330X56.5
BIG CRTON	350X350X340

PCAKING CAPACITY

PART NO.	PCS/RE	RE/BC	PCS/BC
FIX-WXF10AR-30	2500PCS/RE	5 RE/BC	12500 PCS/BC

PART NO. FIX-WXF10AR-30		CHECKED BY CY		TOLERANCES ARE .X ± 0.2 .XX ± 0.1 .XXX ± AWG	DESCRIP TION:			
DWG NO. FIX-WXF10AR-30		DRAWING BY						
FILE NO.		PROJECTION 		AREA	REVISIONS	HK	DATE	
UNIT / mm	SCALE 1 : 1							