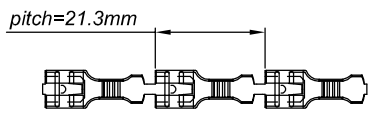
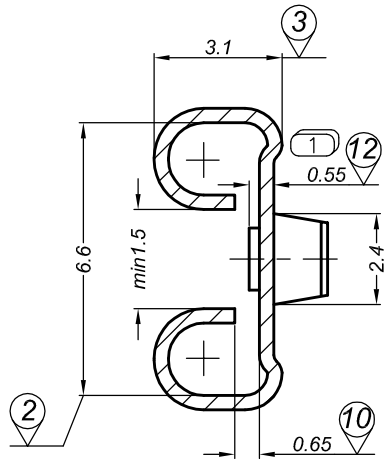
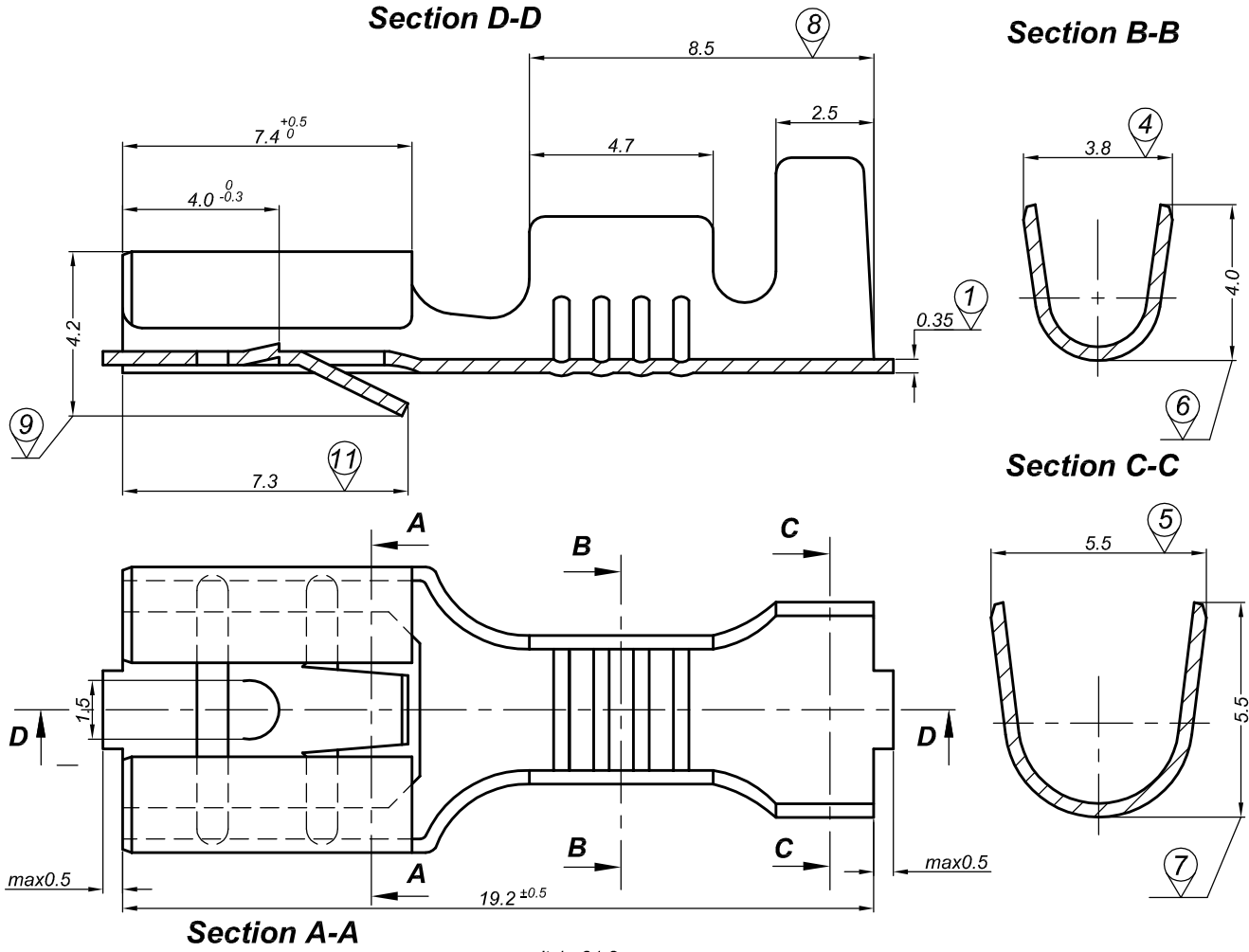
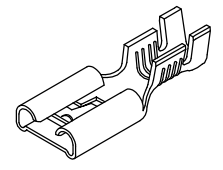


PRODUCT NAME	EDITION	Rev. No	EXPLANATION	DATE
		1		
SF2D	G			

PLEASE DO NOT MEASURE THE DIMENSIONS FROM THE DRAWING.



CABLE CROSS SECTION : 1-2.5 mm²
SOURCE STANDARD: DIN 46340 T3



NOTE: FOR CODES OF COATED PRODUCTS PLEASE LOOK IN THE CHARACTERISTICS NO:S05.017.

NO	MEASUREMENT DEVICE	MAX. VALUE	MIN. VALUE
1	MICROMETER	0.40	0.30
2	CALIPER	6.90	6.60
3	CALIPER	3.30	2.90
4	CALIPER	4.30	3.30
5	CALIPER	6.00	5.00
6	CALIPER	4.50	3.50
7	CALIPER	6.00	5.00
8	CALIPER	9.00	8.00
9	CALIPER	4.60	4.20
10	FEELER BLADE	0.70	0.60
11	CALIPER	7.30	6.90
12	CALIPER (1)	0.57	0.53

DISTRIBUTION	PART CODE	MATERIAL	STANDARD	COATING THICKNESS		
				Sn	Ag	Ni
01 ()	0100104022	CuZn30	TS EN 1652	-	-	-
02 ()						
03 ()	0300104022	CuSn6	TS EN 1652	-	-	-
04 ()	0500104022	DC	TS EN 10139	-	-	-
08 ()						
09 ()	DRAWN BY	T.AL TUNTAŞ	SIGNATURE	DATE	15.03.1999	Part Code No
10 ()	CONFIRMATION	U.AL TUNTAŞ	SIGNATURE	DATE	15.03.1999	Drawing No

0100104022
5.10.0.1.04.022