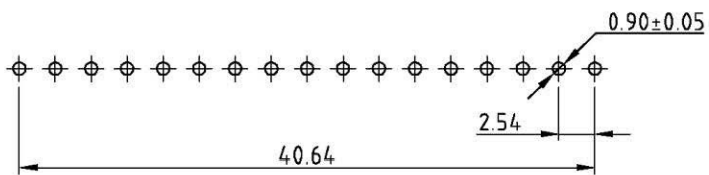
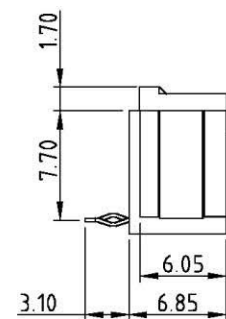
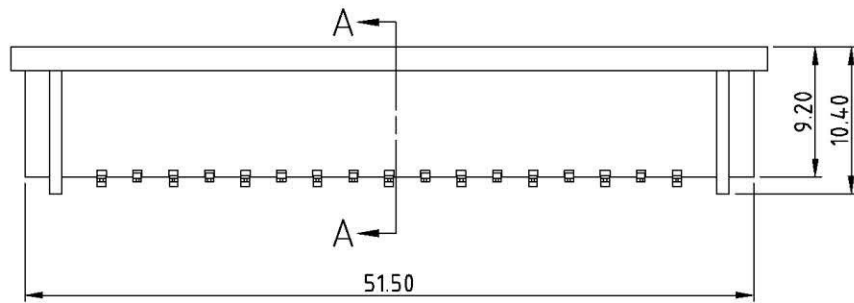
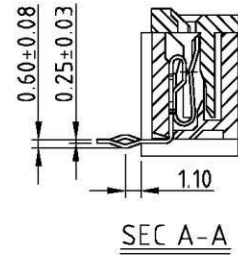
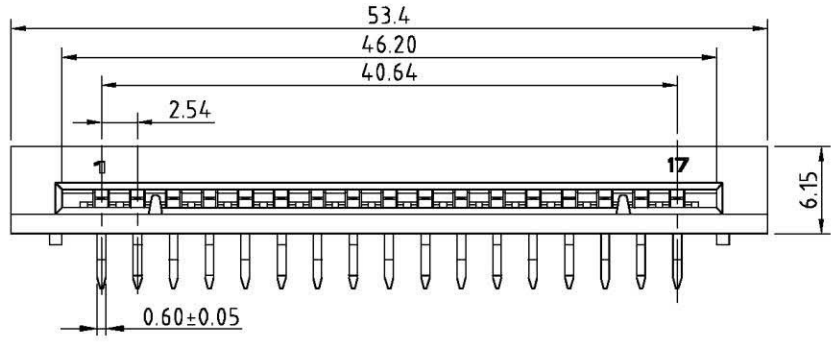
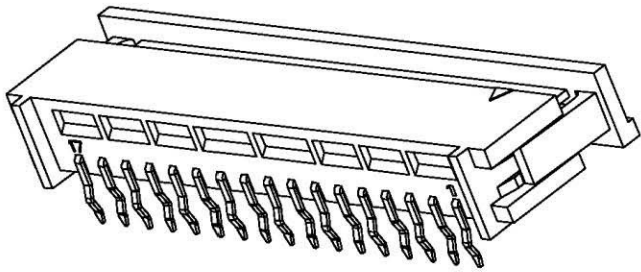
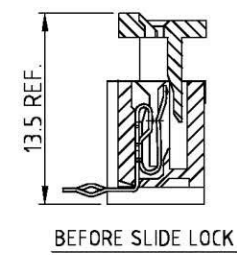


1 2 3 4 5 6 7 8 9 0

J  
I  
H  
G  
F  
E  
D  
C  
B  
A



RECOMMENDED PCB LAYOUT



Notes

- 1. FEATURE:  
Insulator: PBT+30% G/F, 94V-0, Black  
Contact: Phosphor Bronze, Tin Plating Over Nickel.
- 2. SPECIFICATION:  
Current Rating: 1A AC,DC  
Voltage Rating: 250V,AC RMS  
Withstanding Voltage: 1000V AC/minute.  
Contact Resistance: 25 milliohms max.  
Insulation Resistance: 1000 Megohms min.  
Temperature range: -40 to + 85 Degree C  
Applicable PC Board Thickness: 1.60mm [.063"]

FPC-RZB-17-LF  
LEADFREE  
RoHS Compliant

**All Connectors**

www.allconnectors.de info@allconnectors.de  
Tel: 0640 711 7002503 Fax: 0640 711 7009504  
Zilberstr. 25a 60389 Frankfurt am Main

PART NO. FPC-RZB-17		CHECKED BY CY		TOLERANCES ARE .X±0.2 .XX± .XXX± AWG	DESCRIPTION:			
DWG NO. FPC-RZB-17		DRAWING BY						
FILE NO.		PROJECTION		AREA	REVISIONS	HK	DATE	
UNIT / mm	SCALE 1:1							