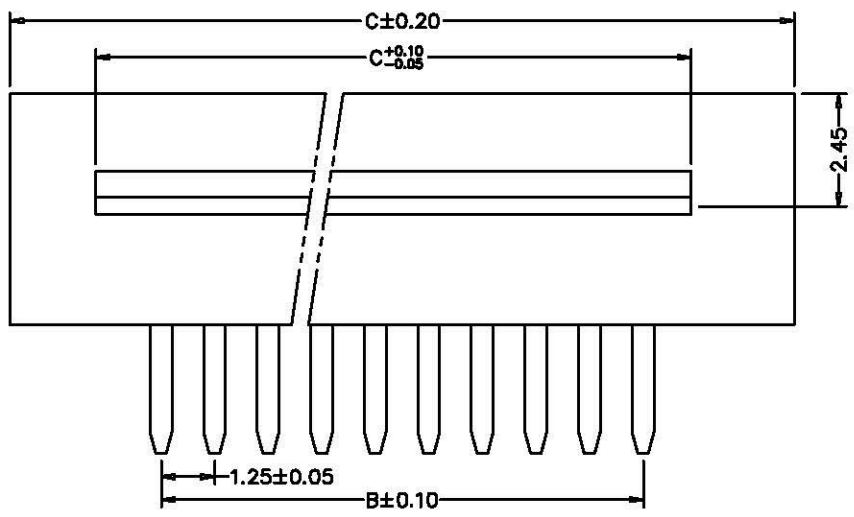
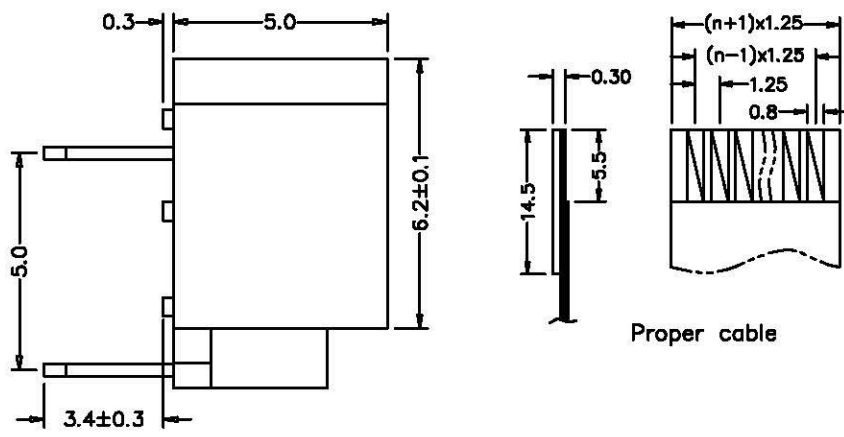
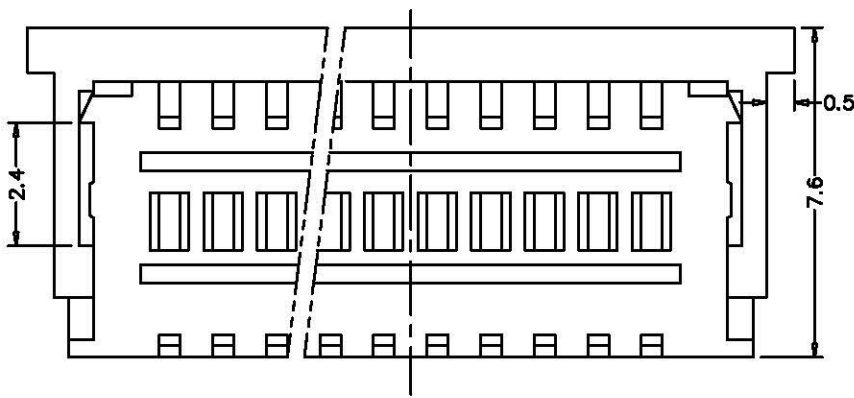


REV.	DATE	ECN NO.	MODIFICATION	APPROVER
A	2009/03/31	/	NEW	Vicky



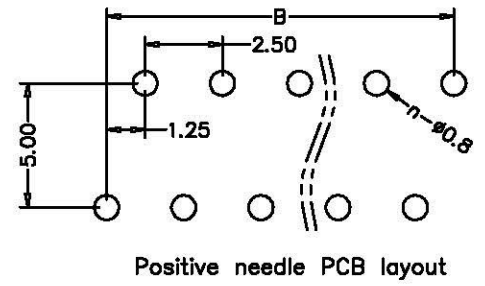
- SPECIFICATIONS**
1. Poles: 3~32
 2. Voltage rating: AC,DC,50V(50HZ)
 3. Current rating: 0.5A,AC,DC
 4. Withstand voltage: 500V AC/minute
 5. Working Temperature: -25°C~+85°C
 6. Insulation resistance: ≥800MΩ
 7. Contact resistance: ≤20mΩ
 - 8 Single Contact

- TERMINAL:**
1. Material: Phosphor Bronze
- HOUSING:**
2. Material: PBT,UL94V-0



Proper cable

PIN NO.	A	B	C
3	5.20	2.50	9.55
4	6.45	3.75	10.80
5	7.70	5.00	12.05
6	8.95	6.25	13.30
7	10.20	7.50	14.55
8	11.45	8.75	15.80
9	12.70	10.00	17.05
10	13.95	11.25	18.30
11	15.20	12.50	19.55
12	16.45	13.75	20.80
13	17.70	15.00	22.05
14	18.95	16.25	23.30
15	20.20	17.50	24.55
16	21.45	18.75	25.80
17	22.70	20.00	27.05
18	23.95	21.25	28.30
19	25.20	22.50	29.55
20	26.45	23.75	30.80
21	27.70	25.00	32.05
22	28.95	26.25	33.30
23	30.20	27.50	34.55
24	31.45	28.75	35.80
25	32.70	30.00	37.05
26	33.95	31.25	38.30
27	35.20	32.50	39.55
28	36.45	33.75	40.80
29	37.70	35.00	42.05
30	38.95	36.25	43.30
31	40.20	37.50	44.55
32	41.45	38.75	45.80



GENERAL TOLERANCE		UNITS mm	NAME:	FPC				
SELECT	✓		PART NO:	FPC125**--40***		TITLE:	FPC1.25mm XP DIP 90° 单接正脚位带锁	
ON TOL	1 2 3	MAT'L	APPD:	Vicky	DWG NO.	ATOM-A00732		
X.XXX	±0.05 ±0.15	FINISH	CHKD:	Amy		SCALE	SHEET	REV
X.XX	±0.05 ±0.13 ±0.25		Q'TY	DR:		Iris	1:1	1/1
X.X	±0.15 ±0.25 ±0.50							
X	±0.20 ±0.30 ±1.00							
ANGLE	±2°							