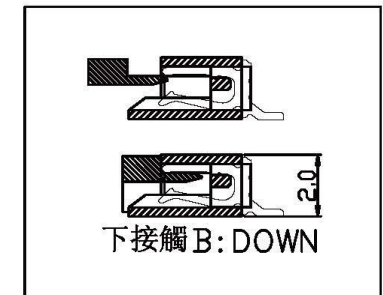
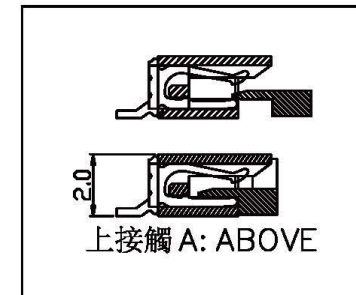
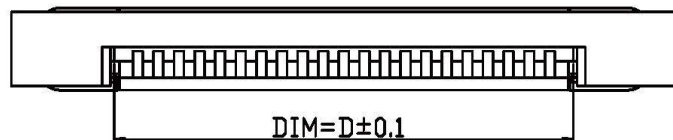
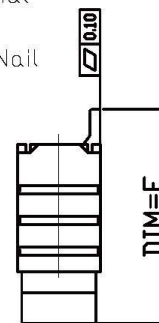
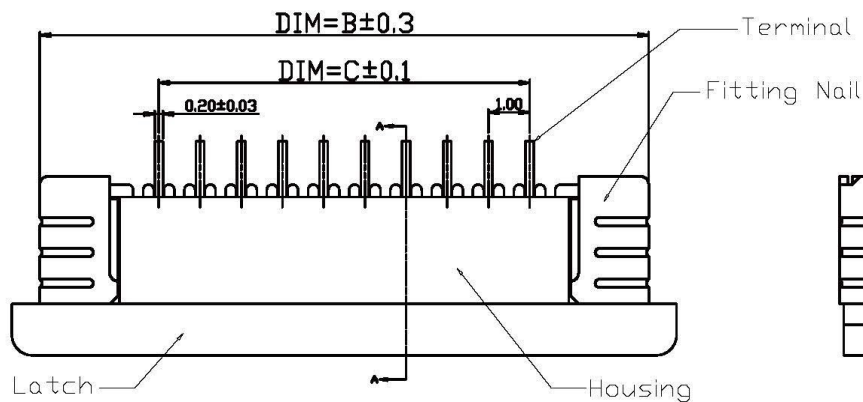
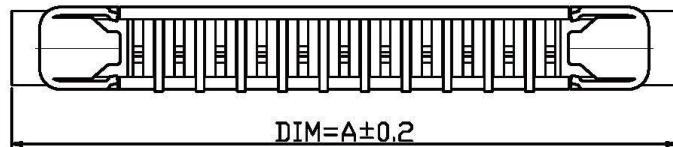


Material:

- 1.1 Housing: thermoplastic high temp. UL94V-0; Color: Natural.
- 1.2 Latch: thermoplastic high temp. UL94V-0; Color: Black.
- 1.3 Terminal: Copper Alloy.
- 1.4 Fitting Nail: Copper Alloy.



PIN NO.	DIM. A	DIM. B	DIM. C	DIM. D
3~N~28	N+6.10	N+5.00	N-1.00	N+1.10
DIM. E	3~N~16 E=5.25 ; 17~N~28 E=5.75			

All Connectors

www.allconnectors.de
Tel.: 0049 711 7009503
70794 Filderstadt - Germany

info@allconnectors.de
Fax: 0049 711 7009504
Kettnerstr. 25

RoHS Compliant

DRAWING BY CY

CHECKED BY GENIUS

UNIT / mm SCALE 1 : 1

DATE

SIZE A4

TOLERANCES ARE

X ±
X ± 0.20
.XX ± 0.15
.XXX ± 0.10
ANG ±

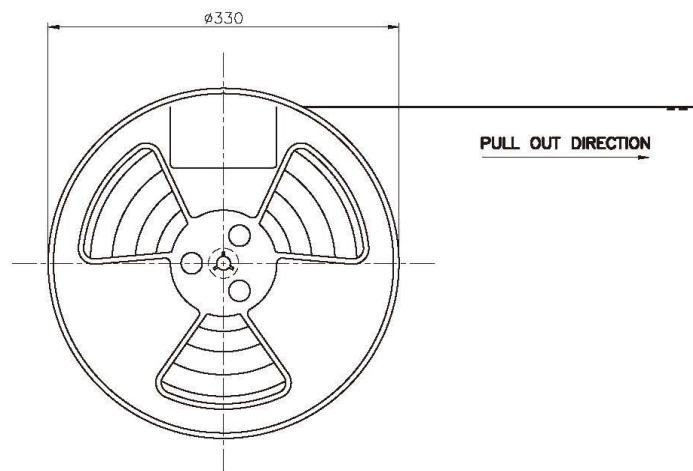
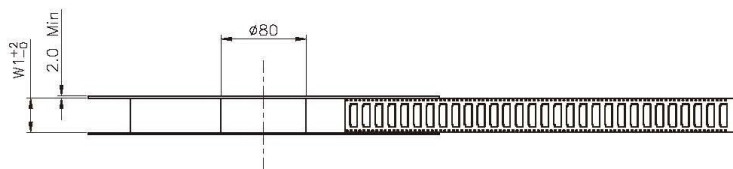
PPOJECTION



ORDER INFORMATION

FPA-WZx202R-xx-LF
SERIES REEL 03~28WAY LEADFREE
90°SMT HIGH 2.0mm
A: UPPER CONTACT
B: BOTTOM CONTACT
ZIF

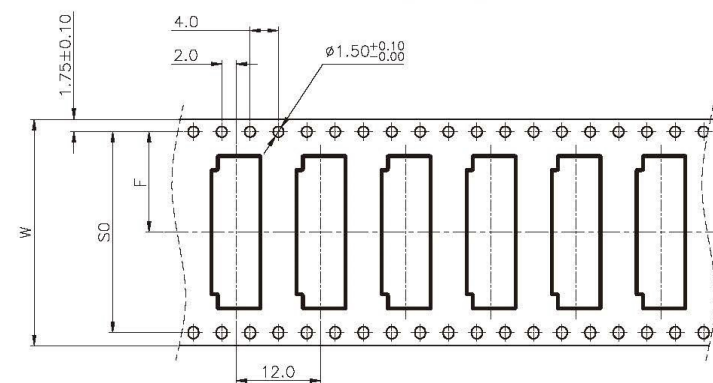
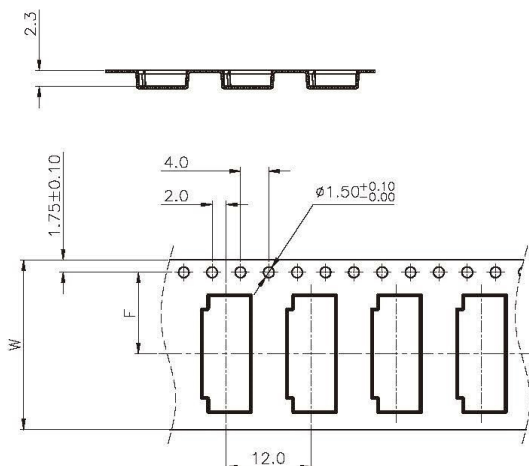
DESCRIPTION: 1.0mm H=2.0 ZIF FPC SMT R/A CONNECTOR



PIN No.	04~10	11~16	17~27	28~30
Reel Width	24.4	32.4	44.4	56.4
DIM W	24	32	44	56
DIM F	11.5	14.2	20.2	26.2
DIM SO	NA	28.4	40.4	52.4

NOTES:

1. ALL DIMENSIONS MEET EIA-481-C REQUIREMENTS.
2. MATERIAL: BLACK ANTI-STATIC POLYSTYRENE.
3. COMPONENT LOAD PER 13" REEL : 2000PCS.
4. PEELING OFF FORCE OF TOP TAPE 0.1N~1.0N.



RoHS Compliant

All Connectors

www.allconnectors.de
Tel.: 0049 711 7009503
70794 Filderstadt - Germany

info@allconnectors.de
Fax: 0049 711 7009504
Kettnerstr. 25

DRAWING BY CY

CHECKED BY GENIUS

UNIT / mm SCALE 1 : 1

DATE

SIZE A4

TOLERANCES ARE

X ±
.X ± 0.20
.XX ± 0.15
.XXX ± 0.10
ANG ±

PPOJECTION



ORDER INFORMATION

FPA-WZx202R-xx-LF

SERIES REEL LEADFREE
03~28WAY
HIGH 2.0mm
A: UPPER CONTACT
B: BOTTOM CONTACT
ZIF
90°SMT

DESCRIPTION: 1.0mm ZIF FPC CONNECTOR SMT R/A TYPE H=2.0 PACKING