

1.0mm PITCH FPC CONNECTORS

Right Angle Lower Contact

H=2.5mm

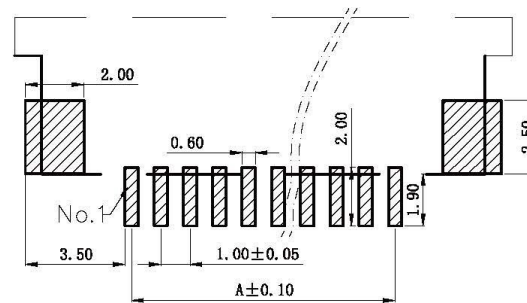
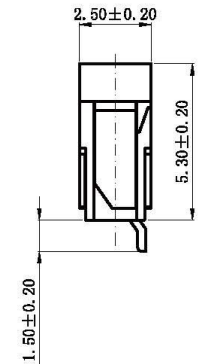
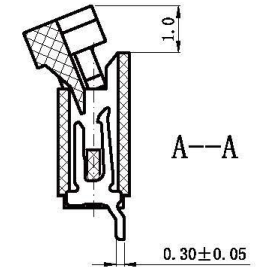
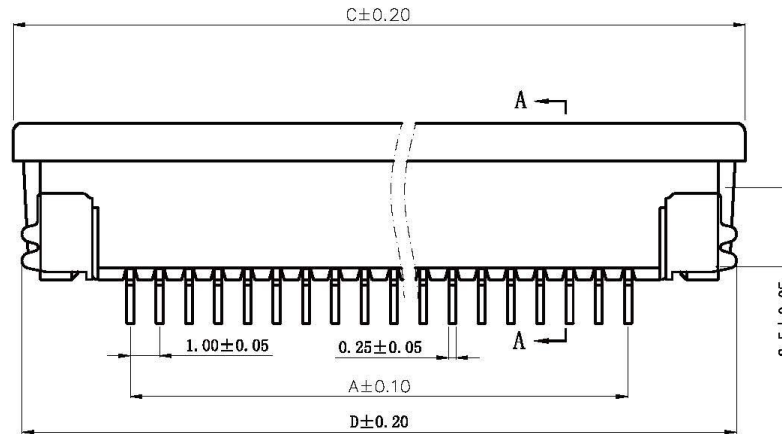
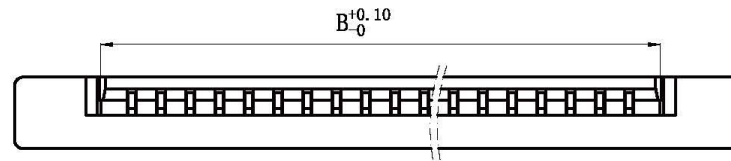
NOTE :

1. Contacts Finish: Tin 100 "u" Over Nickel 50 "u"

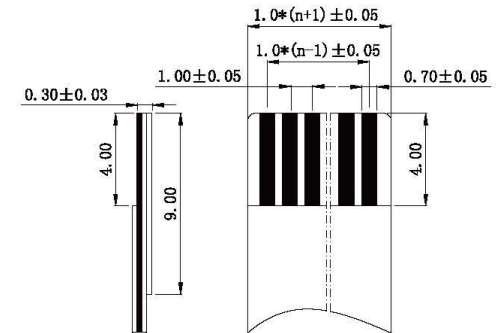
2. Material:

Insulator: Thermoplastic
Contacts: Phosphor Bronze

No. of Contacts	DIM. A	DIM. B	DIM. C	DIM. D
04	3.00	5.30	11.10	10.10
05	4.00	6.30	12.10	11.10
06	5.00	7.30	13.10	12.10
07	6.00	8.30	14.10	13.10
08	7.00	9.30	15.10	14.10
09	8.00	10.30	16.10	15.10
10	9.00	11.30	17.10	16.10
11	10.00	12.30	18.10	17.10
12	11.00	13.30	19.10	18.10
13	12.00	14.30	20.10	19.10
14	13.00	15.30	21.10	20.10
15	14.00	16.30	22.10	21.10
16	15.00	17.30	23.10	22.10
17	16.00	18.30	24.10	23.10
18	17.00	19.30	25.10	24.10
19	18.00	20.30	26.10	25.10
20	19.00	21.30	27.10	26.10
21	20.00	22.30	28.10	27.10
22	21.00	23.30	29.10	28.10
23	22.00	24.30	30.10	29.10
24	23.00	25.30	31.10	30.10
25	24.00	26.30	32.10	31.10
26	25.00	27.30	33.10	32.10
27	26.00	28.30	34.10	33.10
28	27.00	29.30	35.10	34.10
29	28.00	30.30	36.10	35.10
30	29.00	31.30	37.10	36.10
32	31.00	33.30	39.10	38.10



PCB Layout



All Connectors

www.allconnectors.de info@allconnectors.de
Tel.: 0049 711 7009503 Fax: 0049 711 7009504
70794 Filderstadt - Germany Kettenerstr. 25

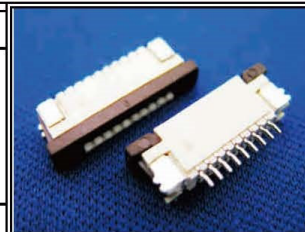
RoHS Compliant

DRAWING BY CY
CHECKED BY GENIUS
UNIT/mm SCALE 1:1
DATE
SIZE A4

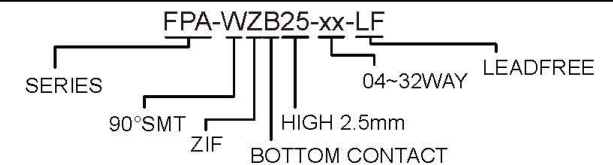
TOLERANCES ARE

X ±
.X ±
.XX ±
.XXX ±
ANG ±

PJECTION



ORDER INFORMATION



DESCRIPTION: FFC/FPC Connector ZIF Right Angle Lower Contact
Type 1.0 mm H=2.5mm