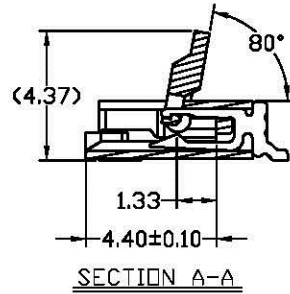
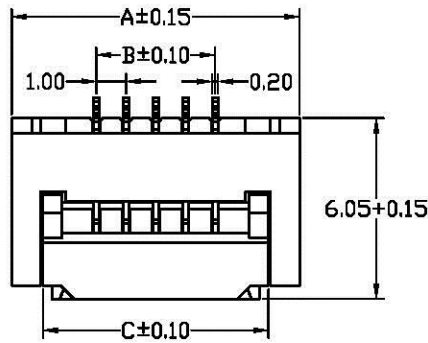


REV.	ECN.NO.	MODIFY.CONTENT	DATE
A			



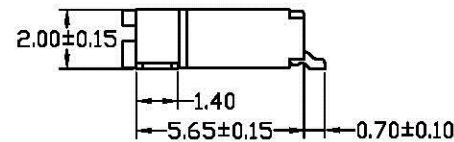
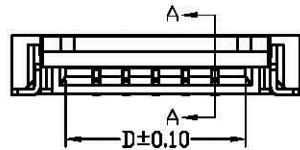
NOTES:

1. Material:

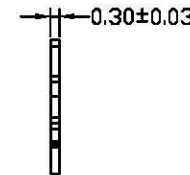
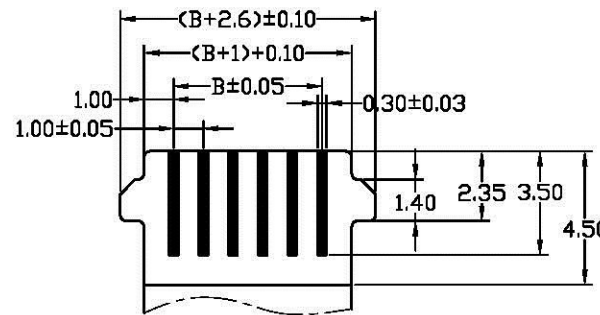
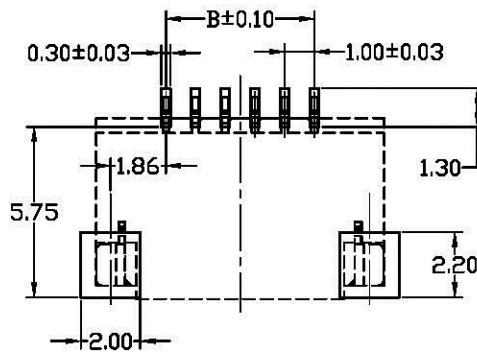
- 1.1 Insulator: Thermo plastic (UL94V-0)
- 1.2 Actuator: Thermo plastic (UL94V-0)
- 1.3 Terminal: Phosphor Bronze
- 1.4 ME: Brass

2. Plating:

- 2.1 Terminal Matte Tin Or Gold Flash Plating Nickel Overall
- 2.2 ME Matte Tin Plating Over Nickel.



Number of Contacts	Dimension			
	A	B	C	D
4	8.70	3.00	6.60	5.15
5	9.70	4.00	7.60	6.15
6	10.70	5.00	8.60	7.15
7	11.70	6.00	9.60	8.15
8	12.70	7.00	10.60	9.15
9	13.70	8.00	11.60	10.15
10	14.70	9.00	12.60	11.15
11	15.70	10.00	13.60	12.15
12	16.70	11.00	14.60	13.15
13	17.70	12.00	15.60	14.15
14	18.70	13.00	16.60	15.15
15	19.70	14.00	17.60	16.15
16	20.70	15.00	18.60	17.15
17	21.70	16.00	19.60	18.15
18	22.70	17.00	20.60	19.15
19	23.70	18.00	21.60	20.15
20	24.70	19.00	22.60	21.15
21	25.70	20.00	23.60	22.15
22	26.70	21.00	24.60	23.15
23	27.70	22.00	25.60	24.15
24	28.70	23.00	26.60	25.15
25	29.70	24.00	27.60	26.15
26	30.70	25.00	28.60	27.15
27	31.70	26.00	29.60	28.15
28	32.70	27.00	30.60	29.15
29	33.70	28.00	31.60	30.15
30	34.70	29.00	32.60	31.15
31	35.70	30.00	33.60	32.15
32	36.70	31.00	34.60	33.15



Recommended FPC Dimension

FPC/FFC Insert Direction  
Recommended P.C.B Layout

GENERAL TOLERANCE		DRAWN	xiaohu.leong	09.17-12	SCALE	PART NO.	1.0PITCH 翻盖式 FPC CONN
X.	±0.30	x. ± 1°	CHECKED	qiang.zhang	09.17-12	TITLE	1.0 Pitch FPC Connector H2.0
X.X	±0.25	.x ±0.1°	APPROVED	yewen.xie	09.17-12	UNITS	MM
X.XX	±0.20			File NO.			成品SPEC图
X.XXX	±0.10			REV.			
SHEET	1/1	Q'TY	1	A			