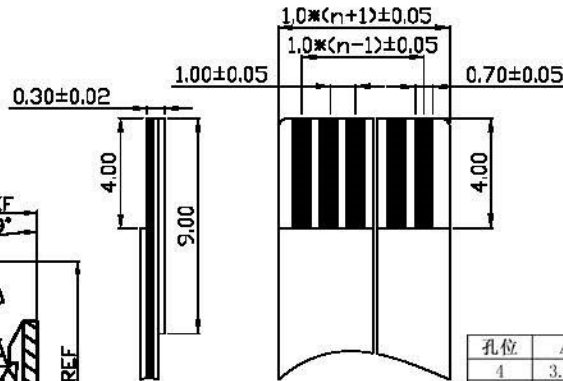
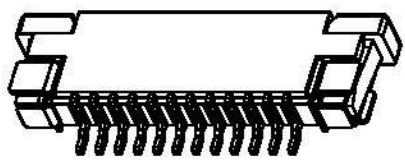
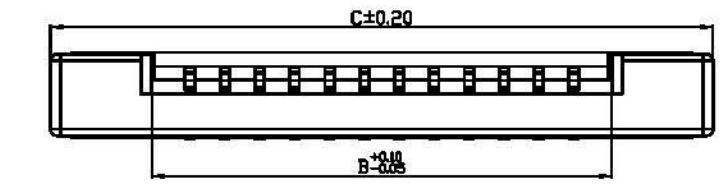


ACAD GENERATED DRAWING. DON'T CHANGE BY HAND

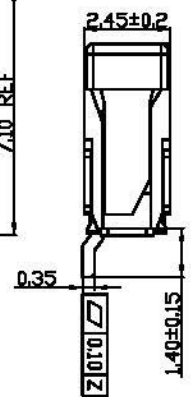
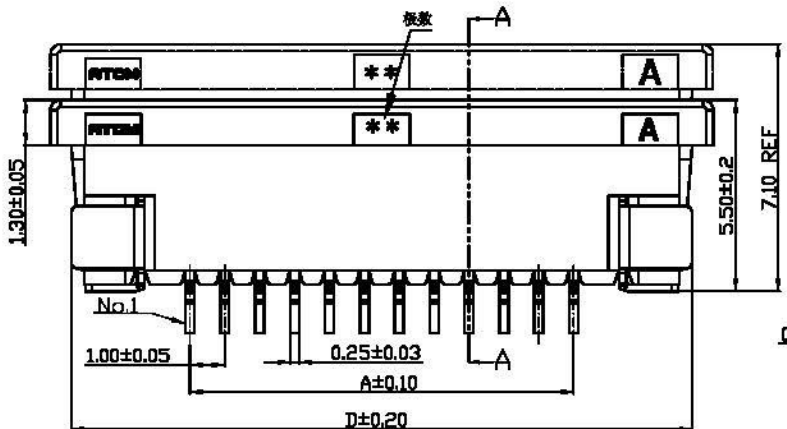
REV	DATE	ECN NO.	MODIFICATION	APPROVER
B	2010/12/15	RD00310121501	版本升级	HYQ

PITCH 1.0mm FPC/FFC CONNECTOR SMT TYPE

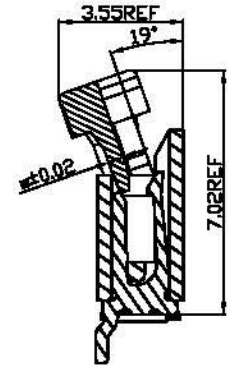


适用电缆

孔位	A	B	C	D
4	3.00	5.20	11.00	9.80
5	4.00	6.20	12.00	10.80
6	5.00	7.20	13.00	11.80
7	6.00	8.20	14.00	12.80
8	7.00	9.20	15.00	13.80
9	8.00	10.20	16.00	14.80
10	9.00	11.20	17.00	15.80
11	10.00	12.20	18.00	16.80
12	11.00	13.20	19.00	17.80
13	12.00	14.20	20.00	18.80
14	13.00	15.20	21.00	19.80
15	14.00	16.20	22.00	20.80
16	15.00	17.20	23.00	21.80
17	16.00	18.20	24.00	22.80
18	17.00	19.20	25.00	23.80
19	18.00	20.20	26.00	24.80
20	19.00	21.20	27.00	25.80
21	20.00	22.20	28.00	26.80
22	21.00	23.20	29.00	27.80
23	22.00	24.20	30.00	28.80
24	23.00	25.20	31.00	29.80
25	24.00	26.20	32.00	30.80
26	25.00	27.20	33.00	31.80
27	26.00	28.20	34.00	32.80
28	27.00	29.20	35.00	33.80
29	28.00	30.20	36.00	34.80
30	29.00	31.20	37.00	35.80
31	30.00	32.20	38.00	36.80
32	31.00	33.20	39.00	37.80
33	32.00	34.20	40.00	38.80
34	33.00	35.20	41.00	39.80
35	34.00	36.20	42.00	40.80



SECTION A-A

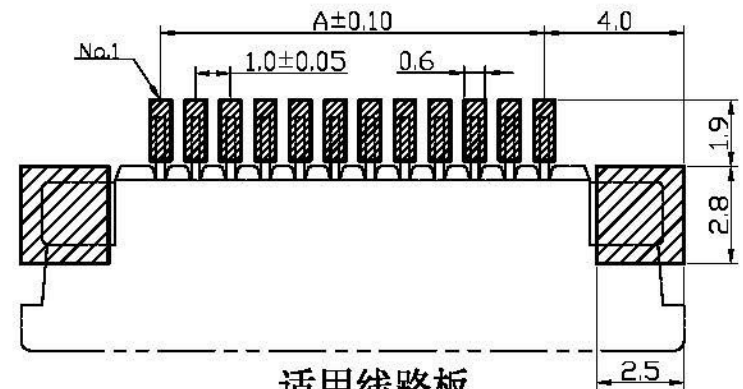


注:
 * "A" 处尺寸为 (公差 ±0.01mm)
 4Pin-10Pin: 0.47mm;
 11Pin-22Pin: 0.45mm;
 22Pin-35Pin: 0.43mm.

SPECIFICATION

1. Material:
 Housing: Thermoplastic, UL94V-0, color: Natural.
 Lock: Thermoplastic, UL94V-0, color: black.
 Contacts: Copper Alloy.
 Tin/Gold plated over nickel plated (50 u" min)
 Solder tabs: Copper Alloy.
 Tin/Gold plated over nickel plated (50 u" min)

2. Electrical Characteristics:
 Voltage rating: 50V(max).
 Current rating: 0.5A(max).
 Operating Temperature: -25°C~+85°C.
 Insulation resistance: 500M ohms min. at 500VDC
 Dielectric withstanding voltage: 500 VAC/1minute.
 Contact resistance: 30m ohms max.



适用线路板
 RECOMMENDED PCB LAYOUT

GENERAL TOLERANCE		UNITS	NAME:	Allconnectors	
SELECT		mm	1.0mm FPC Connector(半包)		
DR	TOL	1 2 3	PART NO:	FPC100 10-10 半包	
X	0.01	0.02 0.05	APPD:	hyq	
X	0.02	0.05 0.10	CHKD:	Vicky	
X	0.05	0.10 0.20	DR:	Aimee	
X	0.10	0.20 0.50			
ANGLE	45°				
			TITLE:		1.0mm FPC 半包卧式上接 (H=2.5mm)
			DWG NO.		ATOM-A01444
			SCALE		1:1
			SHEET		1/1
			REV		B