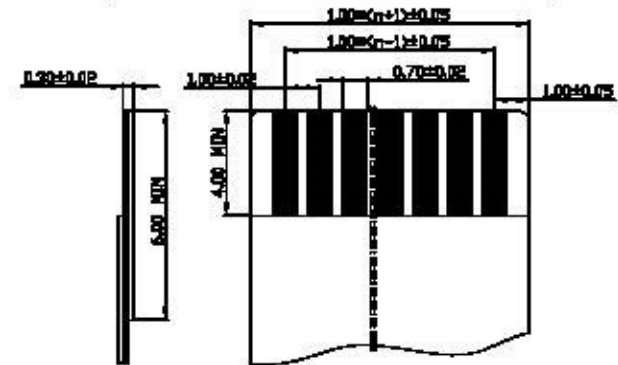
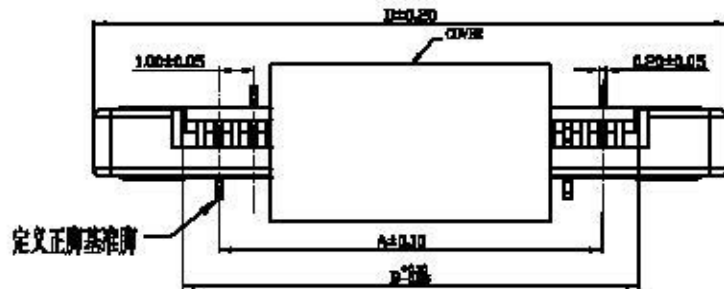


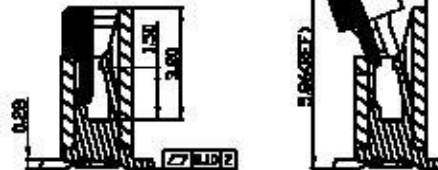
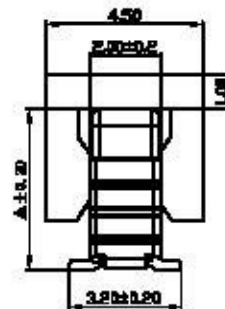
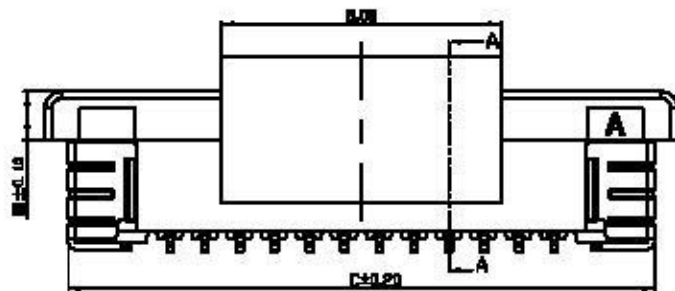
ACAD GENERATED DRAWING. DON'T CHANGE BY HAND

PITCH 1.0mm FPC CONNECTOR SMT TYPE

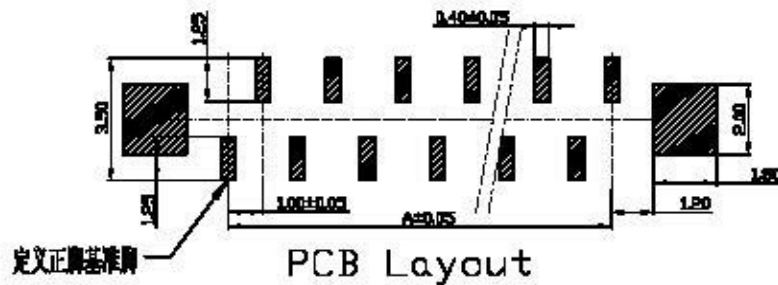
REV	DATE	ECN NO	MODIFICATION	APPROVER
B	2012/01/11	RD00312011101	版本升级	Jason_Lee



适用扁平电缆



SECTION A-A



PCB Layout

SPECIFICATION

1. Material:  
 Housing: Thermoplastic UL94V-0,color:Black  
 Lock: Thermoplastic UL94V-0,color:Black  
 Contact: Copper alloy,  
 Tin/Gold plated over nickel plated (30 u" min)  
 Solder tab: Copper alloy,  
 Tin/Gold plated over nickel plated (30 u" min)  
 Cover: Thermoplastic, UL94V-0,color:Black.

2. Electrical Characteristics:  
 Voltage rating: 80V(max).  
 Current rating: 0.5A(max).  
 Operating Temperature: -55°C~+85°C.  
 Insulation resistance: 500M ohm min. at 500VDC  
 Dielectric withstanding voltage: 250 VAC/1minute.  
 Contact resistance: 20m ohm max.

注:

\* A Dimension:  
 2Pin~14Pin: 4.60mm;  
 16Pin~22Pin: 4.80mm;  
 23Pin~28Pin: 5.20mm;

\* B Dimension:  
 2Pin~14Pin: 1.40mm;  
 16Pin~22Pin: 1.80mm;  
 23Pin~28Pin: 2.00mm;

NO.	A	B	C	D
2	1.00	3.10	6.80	8.15
3	2.00	1.10	7.80	9.15
4	3.00	5.10	8.80	10.15
5	4.00	6.10	9.80	11.15
6	5.00	7.10	10.80	12.15
7	6.00	8.10	11.80	13.15
8	7.00	9.10	12.80	13.15
9	8.00	10.10	13.80	13.15
10	9.00	11.10	14.80	16.15
11	10.00	12.10	15.80	17.15
12	11.00	13.10	16.80	18.15
13	12.00	14.10	17.80	19.15
14	13.00	15.10	18.80	20.15
15	14.00	16.10	19.80	21.15
16	15.00	17.10	20.80	22.15
17	16.00	18.10	21.80	23.15
18	17.00	19.10	22.80	23.15
19	18.00	20.10	23.80	23.15
20	19.00	21.10	24.80	26.15
21	20.00	22.10	25.80	27.15
22	21.00	23.10	26.80	28.15
23	22.00	24.10	27.80	29.15
24	23.00	25.10	28.80	30.15
25	24.00	26.10	29.80	31.15
26	25.00	27.10	30.80	32.15
27	26.00	28.10	31.80	33.15
28	27.00	29.10	32.80	33.15
29	28.00	30.10	33.80	33.15

GENERAL TOLERANCE		UNITS	NAME:	All connectors	
SELECT	<input checked="" type="checkbox"/>	mm	1.0mm FPC Connector	SMT 0101 0101 0101 0101	
FIN	<input type="checkbox"/>	mm	PART NO:	TITLE:	
FIN	<input type="checkbox"/>	mm	FPC100MM-01MM	1.0mm FPC 全包裹 立式(正脚)以上 CP=2.0mm	
FIN	<input type="checkbox"/>	mm	APPD:	DWG NO.	
FIN	<input type="checkbox"/>	mm	Jason_Lee	ATDM-A01435	
FIN	<input type="checkbox"/>	mm	CHKD:	SCALE SHEET REV	
FIN	<input type="checkbox"/>	mm	Vicky	1:1 1/1 B	
FIN	<input type="checkbox"/>	mm	DR:	Aimee	