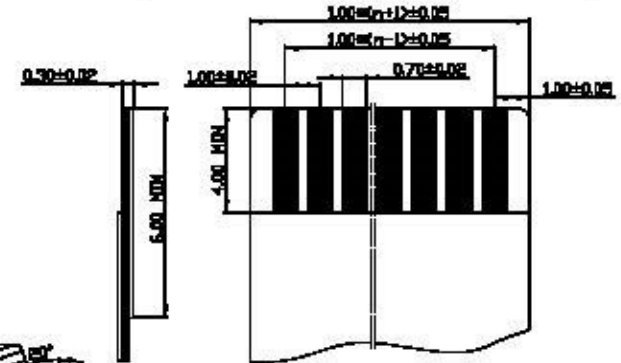
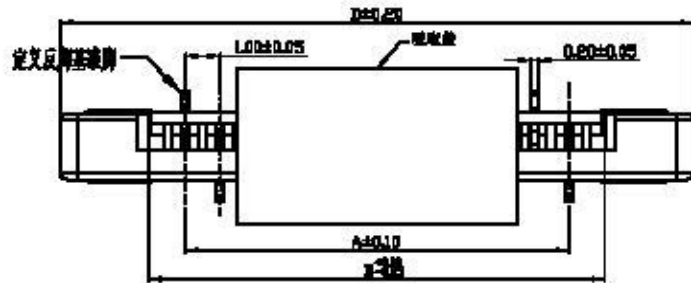


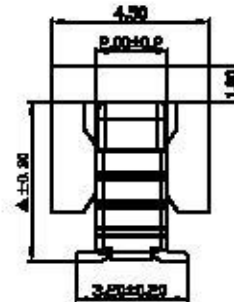
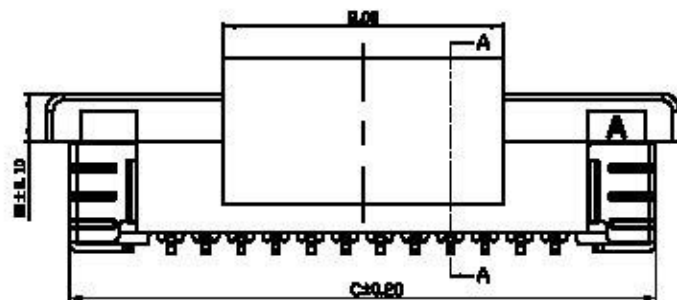
ACAD GENERATED DRAWING. DON'T CHANGE BY HAND

PITCH 1.0mm FPC CONNECTOR SMT TYPE

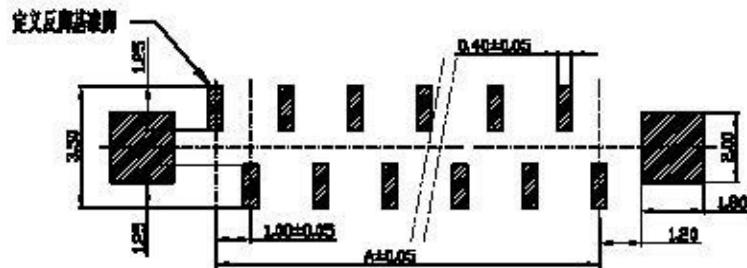
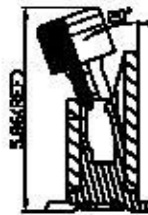
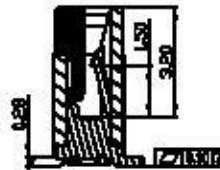
REV	DATE	ECN NO.	MODIFICATION	APPROVER
B	2012/01/11	RD00312011101	版本升级	Jason_Lee



适用扁平电缆



SECTION A-A



PCB Layout

SPECIFICATION

1. Material:

- Housing: Thermoplastic, UL94V-0, color: Natural.
- Leak: Thermoplastic, UL94V-0, color: black.
- Contact: Copper alloy.
- Tin/Gold plated over nickel plated (50 u" min)
- Solder tab: Copper alloy.
- Tin/Gold plated over nickel plated (50 u" min)
- Cover: Thermoplastic, UL94V-0, color: black.

2. Electrical Characteristics:

- Voltage rating: 50V(max).
- Current rating: 0.5A(max).
- Operating Temperature: -25°C~+85°C.
- Insulation resistance: 500M ohms min. at 500VDC.
- Dielectric withstanding voltage: 250 VAC/1minute.
- Contact resistance: 30m ohms max.

注:

- * A * Dimension:
2Pin~14Pin: 4.60mm;
15Pin~22Pin: 4.80mm;
23Pin~29Pin: 5.20mm;

- * B * Dimension:
2Pin~14Pin: 1.40mm;
15Pin~22Pin: 1.80mm;
23Pin~29Pin: 2.00mm;

NO.	A	B	C	D
2	1.00	3.10	6.80	8.15
3	2.00	1.10	7.80	9.15
4	3.00	5.10	8.80	10.15
5	4.00	6.10	9.80	11.15
6	5.00	7.10	10.80	12.15
7	6.00	8.10	11.80	13.15
8	7.00	9.10	12.80	14.15
9	8.00	10.10	13.80	15.15
10	9.00	11.10	14.80	16.15
11	10.00	12.10	15.80	17.15
12	11.00	13.10	16.80	18.15
13	12.00	14.10	17.80	19.15
14	13.00	15.10	18.80	20.15
15	14.00	16.10	19.80	21.15
16	15.00	17.10	20.80	22.15
17	16.00	18.10	21.80	23.15
18	17.00	19.10	22.80	24.15
19	18.00	20.10	23.80	25.15
20	19.00	21.10	24.80	26.15
21	20.00	22.10	25.80	27.15
22	21.00	23.10	26.80	28.15
23	22.00	24.10	27.80	29.15
24	23.00	25.10	28.80	30.15
25	24.00	26.10	29.80	31.15
26	25.00	27.10	30.80	32.15
27	26.00	28.10	31.80	33.15
28	27.00	29.10	32.80	34.15
29	28.00	30.10	33.80	35.15

GENERAL TOLERANCE		UNITS	NAME:	All Connectors	
SELECT	<input checked="" type="checkbox"/>	mm	1.0mm FPC Connector	1.0mm Pitch FPC Connector	
MAT'L	<input type="checkbox"/>		PART NO:	TITLE:	
FINISH	<input type="checkbox"/>		FPC100MM-02MM	1.0mm FPC 全包装 立式(板间距以上) (B=2.0mm)	
QTY	<input type="checkbox"/>		APPD: Jason_Lee	DWG NO. ATDM-A01434	
SCALE	<input type="checkbox"/>		CHKD: Vicky	SCALE SHEET REV	
DR: Aimee	<input type="checkbox"/>			1:1 1/1 B	