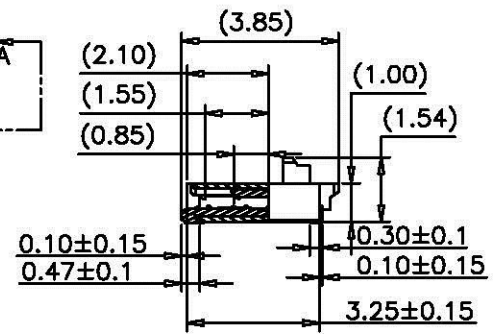
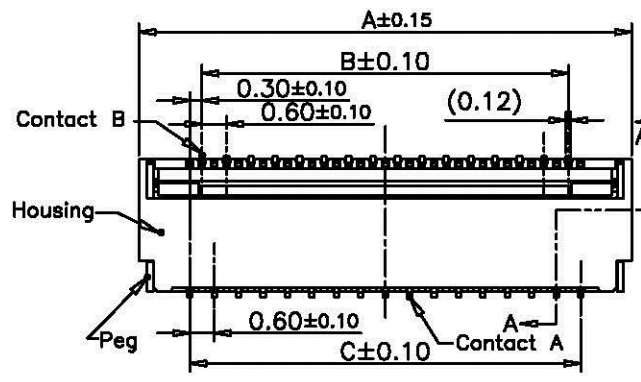
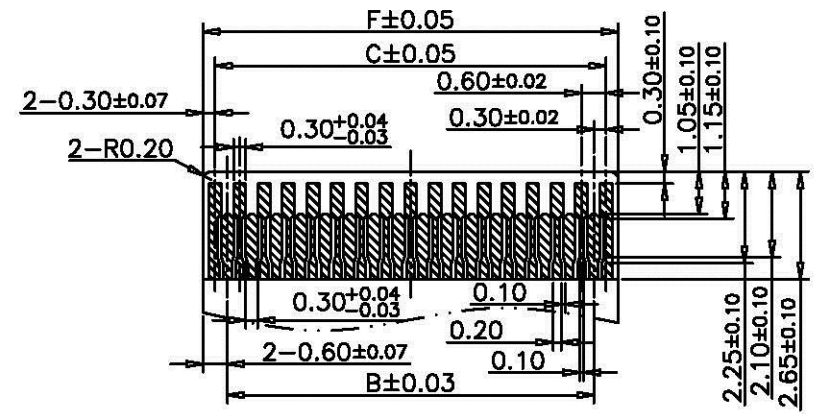


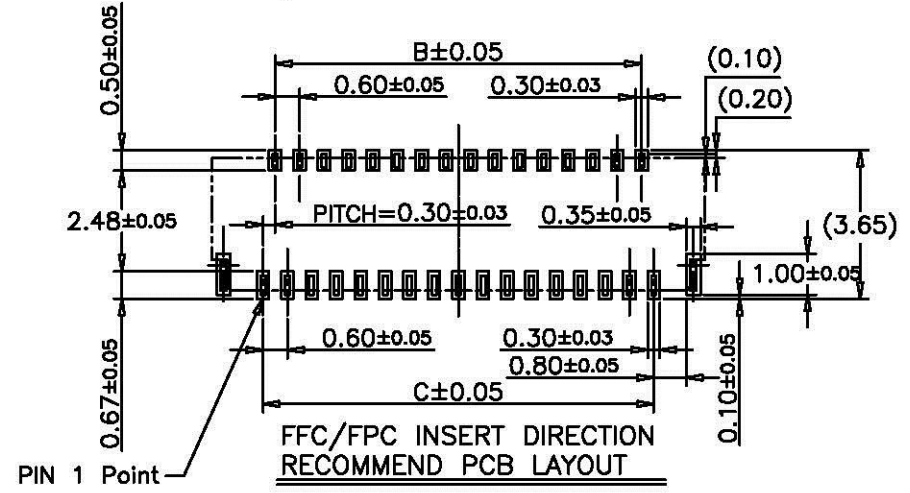
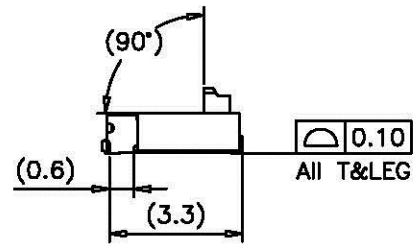
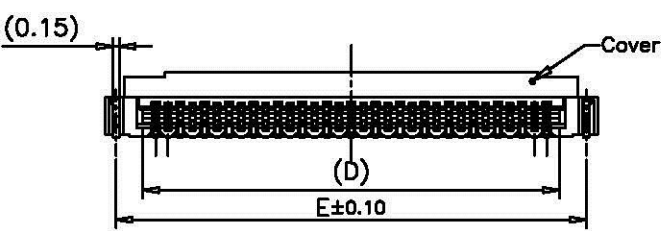
REV.	DATE	ECN NO.	MODIFICATION	APPROVER
A	2011/09/12	/	NEW	Vicky



SECTION A-A



APPLICABLE FFC/FPC
FFC/FPC THICKNESS=0.20±0.03



FFC/FPC INSERT DIRECTION
RECOMMEND PCB LAYOUT

PIN 1 Point

GENERAL TOLERANCE	UNITS	mm	NAME:	FPC
SELECT	✓		MAT'L	
ON:	1	2	3	
X.XXX	±0.05	±0.05	±0.15	
X.XX	±0.15	±0.13	±0.25	
X.X	±0.25	±0.25	±0.50	
X.		±0.50	±1.00	
ANGLE	±2°			

PART NO:	FPC030**--42***
APPD:	Vicky
CHKD:	Emilia
DR:	Anna

All Connectors

www.allconnectors.com info@allconnectors.com

TITLE: FPC0.3mm XP SMT H=1.0mm 前插后掀


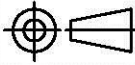
DWG NO. ATOM-A00910

SCALE	SHEET	REV
1:1	1/2	A

5	6	7	8
REV.	DATE	ECN NO.	MODIFICATION
A	2011/09/12	/	NEW
			APPROVER
			Vicky

A	PIN NO.	DIM A	DIM B	DIM C	DIM D	DIM E	DIM F
	09	4.90	1.80	2.40	3.03	4.35	3.00
	11	5.50	2.40	3.00	3.63	4.95	3.60
	13	6.10	3.00	3.60	4.23	5.55	4.20
	15	6.70	3.60	4.20	4.83	6.15	4.80
	17	7.30	4.20	4.80	5.43	6.75	5.40
	19	7.90	4.80	5.40	6.03	7.35	6.00
B	21	8.50	5.40	6.00	6.63	7.95	6.60
	23	9.10	6.00	6.60	7.23	8.55	7.20
	25	9.70	6.60	7.20	7.83	9.15	7.80
	27	10.30	7.20	7.80	8.43	9.75	8.40
	29	10.90	7.80	8.40	9.03	10.35	9.00
	31	11.50	8.40	9.00	9.63	10.95	9.60
	33	12.10	9.00	9.60	10.23	11.55	10.20
C	35	12.70	9.60	10.20	10.83	12.15	10.80
	37	13.30	10.20	10.80	11.43	12.75	11.40
	39	13.90	10.80	11.40	12.03	13.35	12.00
	41	14.50	11.40	12.00	12.63	13.95	12.60
	43	15.10	12.00	12.60	13.23	14.55	13.20
	45	15.70	12.60	13.20	13.83	15.15	13.80
	47	16.30	13.20	13.80	14.43	15.75	14.40
D	49	16.90	13.80	14.40	15.03	16.35	15.00
	51	17.50	14.40	15.00	15.63	16.95	15.60
	53	18.10	15.00	15.60	16.23	17.55	16.20
	55	18.70	15.60	16.20	16.83	18.15	16.80
	57	19.30	16.20	16.80	17.43	18.75	17.40
	59	19.90	16.80	17.40	18.03	19.35	18.00
	61	20.50	17.40	18.00	18.63	19.95	18.60
E	63	21.10	18.00	18.60	19.23	20.55	19.20
	65	21.70	18.60	19.20	19.83	21.15	19.80
	67	22.30	19.20	19.80	20.43	21.75	20.40
	69	22.90	19.80	20.40	21.03	22.35	21.00
	71	23.50	20.40	21.00	21.63	22.95	21.60

NOTES:
 1.MATERIAL:
 HOUSING: HIGHT-TEMP PLASTIC, UL94V-0,COLOR:NATURE;
 COVER: HIGHT-TEMP PLASTIC, UL94V-0,COLOR:BLACK;
 TERMINAL: COPPER ALLOY;
 PEG: ALLOY;
 2.PLATING:
 TERMINAL: GOLD PLATED ON NICKEL OVERALL.
 PEG: TIN PLATED ON NICKEL OVERALL.
 3.RATING:
 CURRENT RATING : 0.3A AC/DC
 VOLTAGE RATING: 30V AC/DC
 TEMPERATURE RANGE: -55°C~+85°C.

GENERAL TOLERANCE			UNITS	mm	NAME:	FPC			
SELECT	<input checked="" type="checkbox"/>		MAT'L		PART NO:	FPC030**-42***	TITLE: FPC0.3mm XP SMT H=1.0mm 前插后掀		
ON TOL	1	2	3		APPD:	Vicky	DWG NO. ATOM-A00910		
X.XXX	±0.05	±0.05	±0.15		CHKD:	Emilia			
X.XX	±0.15	±0.15	±0.25		DR:	Anna	SCALE	SHEET	REV
X.X	±0.25	±0.25	±0.50				1:1	2/2	A
X.		±0.50	±1.00						
ANGLE	±2°								