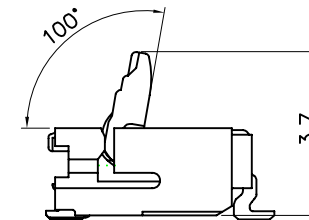
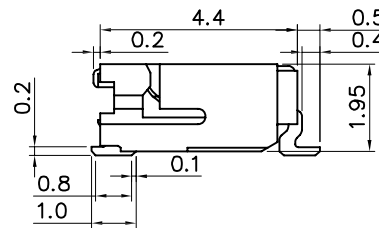
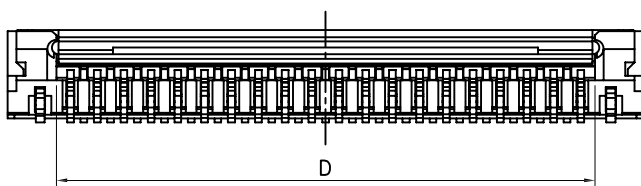


SECTION B-B



WHEN ACTUATOR IS OPENED

1. MATERIAL:

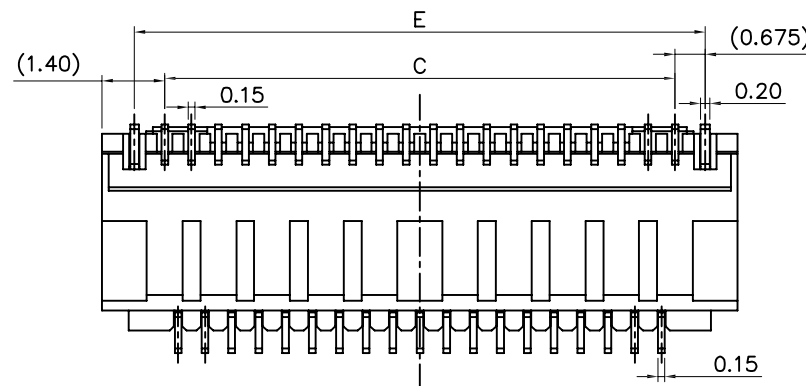
HOUSING: LCP(UL 94V-0)
 ACTUATOR: LCP(UL 94-0)
 TERMINAL: PHOSPHOR BRONZE
 STOPPER: PHOSPHOR BRONZE

2. PLATING:

TERMINAL: SEE ORDERING INFORMATION
 STOPPER: TIN OVER NICKEL(LEAD FREE)

3. RATING:

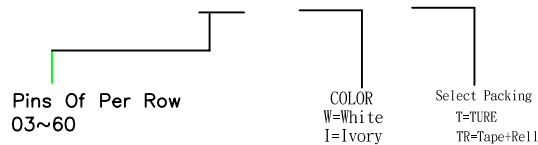
OPERATING VOLTAGE: 30V
 CURRENT RATING: 0.2A
 OPERATING TEMPERATURE: -25°C~+85°C



PIN	DIM A	DIM B	DIM C	DIM D	DIM E
13	6.40	3.00	3.60	4.23	4.95
15	7.00	3.60	4.20	4.83	5.55
17	7.60	4.20	4.80	5.43	6.15
19	8.20	4.80	5.40	6.03	6.75
21	8.80	5.40	6.00	6.63	7.35
23	9.40	6.00	6.60	7.23	7.95
25	10.00	6.60	7.20	7.83	8.55
27	10.60	7.20	7.80	8.43	9.15
29	11.20	7.80	8.40	9.03	9.75
31	11.80	8.40	9.00	9.63	10.35
33	12.40	9.00	9.60	10.23	10.95
35	13.00	9.60	10.20	10.83	11.55
37	13.60	10.20	10.80	11.43	12.15
39	14.20	10.80	11.40	12.03	12.75
41	14.80	11.40	12.00	12.63	13.35
45	16.00	12.60	13.20	13.83	14.55
49	17.20	13.80	14.40	15.03	15.75
51	17.80	14.40	15.00	15.63	16.35
57	19.60	16.20	16.80	17.43	18.15
61	20.80	17.40	18.00	18.63	19.35
71	23.80	20.40	21.00	21.63	22.35

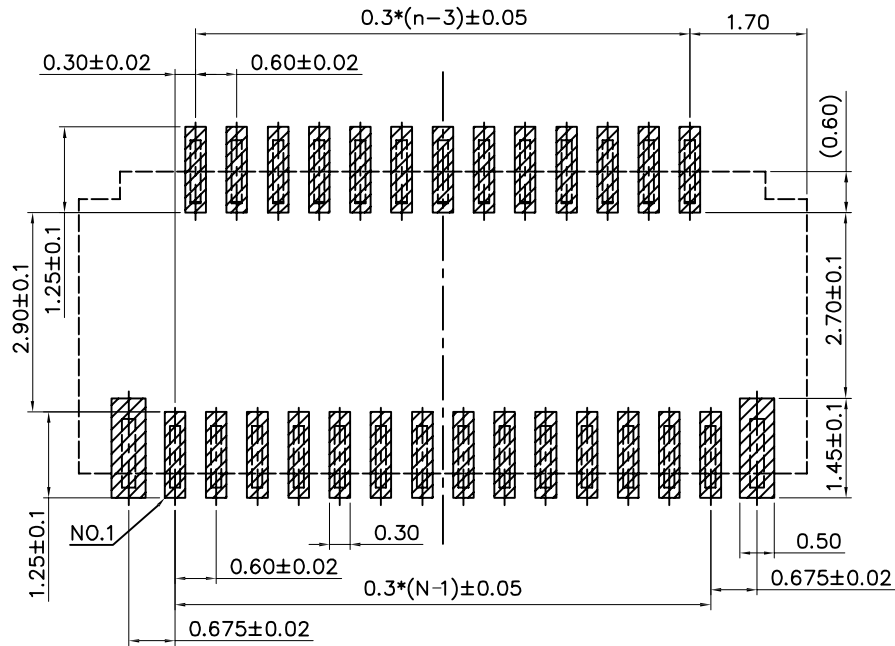
Ordering Information

FCZASHD1 - X 1 X X

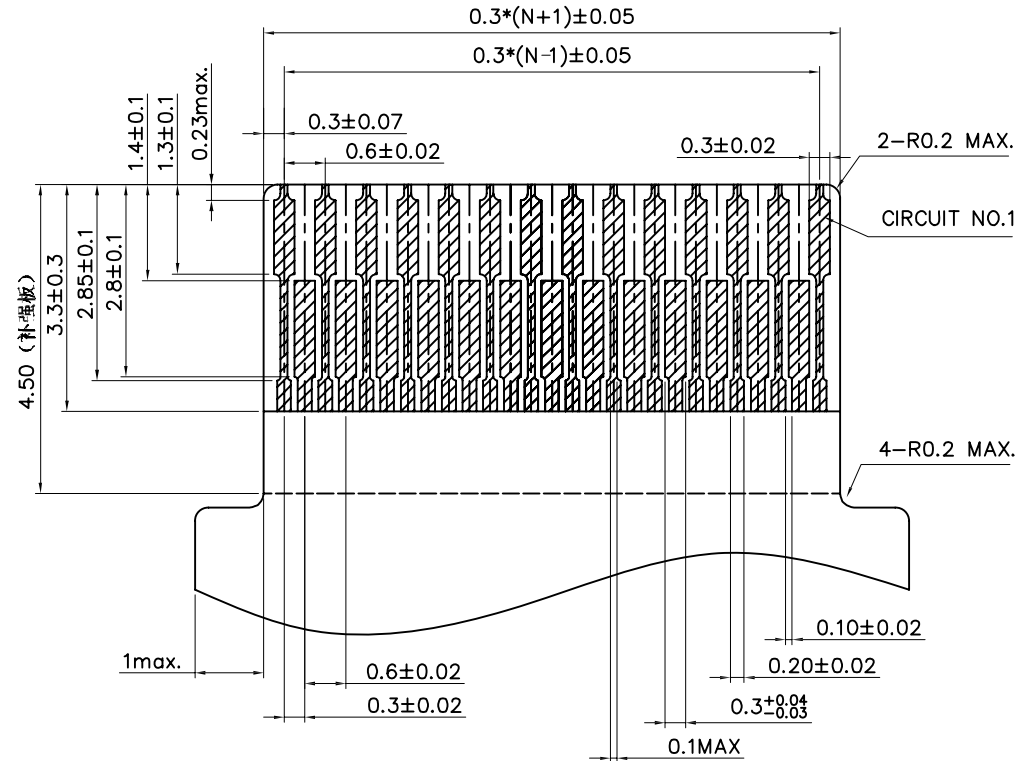


GENERAL TOLERANCE	ANGLE TOLERANCE	DESIGN	DATE
X. ± 0.38	X' ±5°	Andy2009.08.12	
.XX ±0.25	.X' ±2°	CHECK	DATE
.XXX ±0.13	.XX' ±1°	APPRO.	DATE
	.XXX' ±0.5°		
UNIT:mm	SCALE 1:1		
A4	SHEET: 1 of 1		

All Connectors	
www.allconnectors.eu info@allconnectors.eu Tel. +49 (0)711 / 358 110 20 Fax +49 (0)711 / 358 110 25	
FILE NAME	0.3 FPC Downside SMT Type
PART NO	FCZASHD1-X1XX
DRAWING NO.	FCZASHD1-01
	REV.A0



RECOMMENDED PCB PATTERN LAYOUT

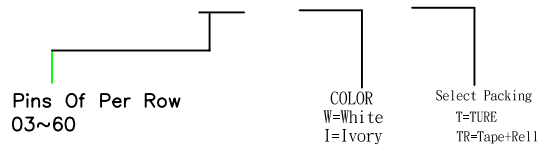



APPLICABLE FPC OF GOLD PATING
RECOMMENDED DIMENSION

THICKNESS: 0.2±0.03

Ordering Information

FCZASHD1 - X 1 X X



GENERAL TOLERANCE	ANGLE TOLERANCE	DESIGN DATE	 www.allconnectors.eu info@allconnectors.eu Tel. +49 (0)711 / 358 110 20 Fax +49 (0)711 / 358 110 25	
X. ± 0.38 .X ± 0.25 .XX ± 0.13	X' ± 5° .X' ± 2° .XX' ± 1° .XXX' ± 0.5°	Andy2009.08.12		
UNIT:mm	SCALE 1:1	CHECK DATE	FILE NAME	0.3 FPC Downside SMT Type
A4	SHEET: 1 of 1	APPRO. DATE	PART NO	FCZASHD1-X1XX
			DRAWING NO.	FCZASHD1-01
				REV.A0