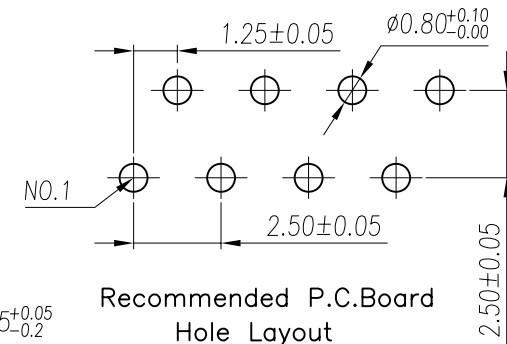
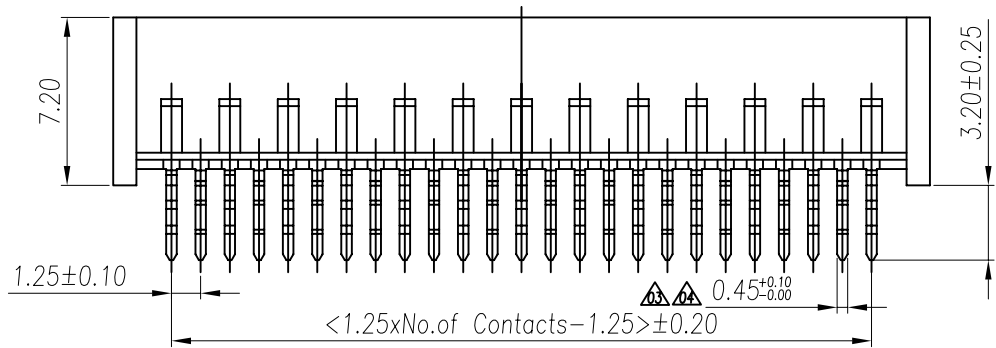


**Specifications**

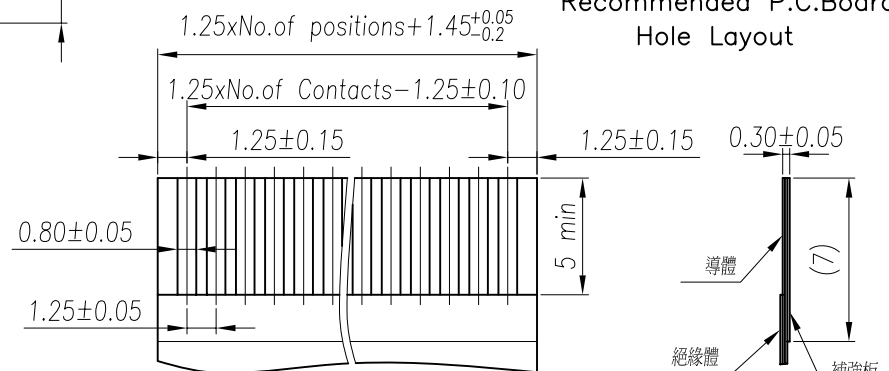
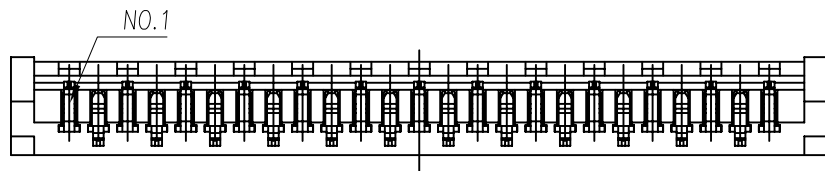
Current Rating: 1Amp  
 Voltage Rating: 200V AC  
 Dielectric Withstanding: 500V AC  
 Insulation Resistance: 1000MΩ Min.  
 Contact Resistance: 20MΩ Min.  
 Operating Temperature: -25°C to +85°C

**Materials**

Contact Material: Phosphor Bronze  
 Insulation Material: Polyester, UL 94V-0  
 P.B.T  
 All materials must be GP materials



Recommended P.C.Board Hole Layout



FFC/FPC

**Ordering Information**

FCLHS1B - X 1 X X

Pins Of Per Row  
 08, 10, 11, 12, 13, 14,  
 15, 17, 20, 25, 29, 32, 30

COLOR  
 W=White  
 I=Ivory

Select Packing  
 T=TURE  
 TR=Tape+Rel1

GENERAL TOLERANCE	ANGLE TOLERANCE	DESIGN DATE	 www.allconnectors.eu   info@allconnectors.eu Tel. +49 (0)711 / 358 110 20   Fax +49 (0)711 / 358 110 25	
X. ± 0.38 .XX ± 0.25 .XXX ± 0.13	X° ± 5° .X° ± 2° .XX° ± 1° .XXX° ± 0.5°	Andy2009.08.12		
UNIT:mm	SCALE 1:1	CHECK DATE	FILE NAME	1.25 MM FPC DIP Type
A4	SHEET: 1 of 1	APPRO. DATE	PART NO	FCLHS1B-X1XX
			DRAWING NO.	FCLHS1B-01
				REV.A0