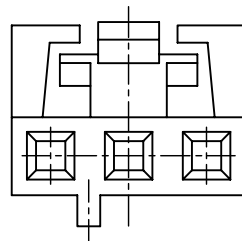
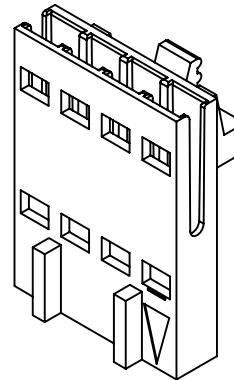


02P

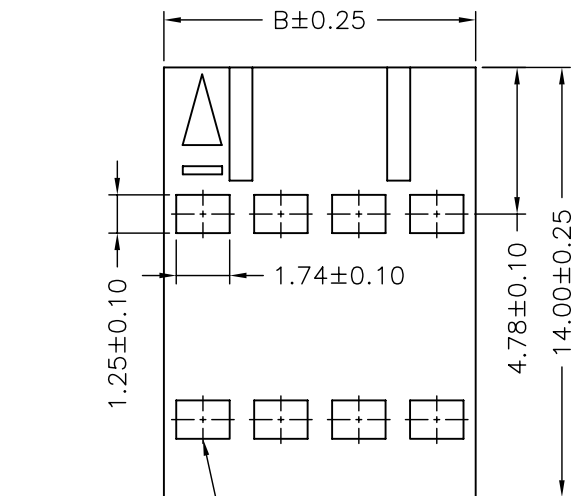


03P

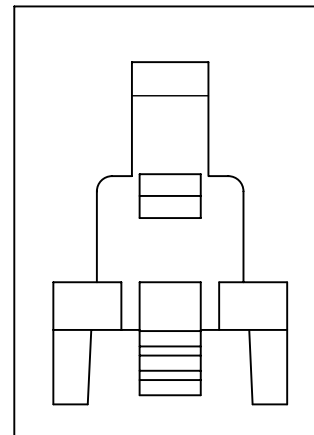
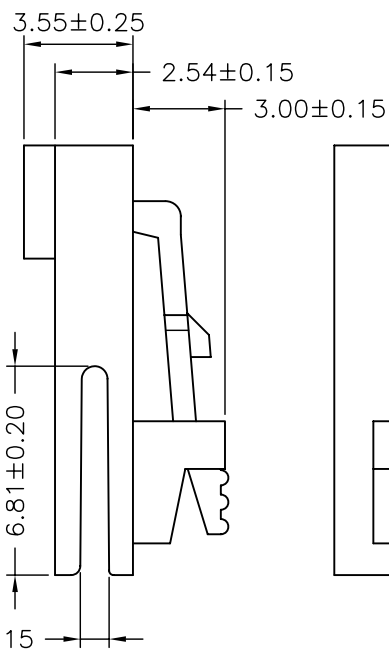


SPECIFICATIONS

Current Rating: 2A AC,DC
 Voltage Rating: 250V AC,DC
 Temperature Range: -25°C ~ +85°C
 Contact Resistance: 10mΩ Max
 Insulation Resistance: 1000MΩ Min
 Withstanding Voltage: 500V AC/minute
 Material: PBT30%GF,UL94V-0
 Color: Natural(Black)



Circuit 1



Ordering Information & Dimensions

PART NO.	Dimensions	
	A	B
F2544H-02P-LA	2.54	5.08
F2544H-03P-LA	5.08	7.62
F2544H-04P-LA	7.62	10.16
F2544H-05P-LA	10.16	12.70
F2544H-06P-LA	12.70	15.24
F2544H-07P-LA	15.24	17.78
F2544H-08P-LA	17.78	20.32
F2544H-09P-LA	20.32	22.86
F2544H-10P-LA	22.86	25.40
F2544H-11P-LA	25.40	27.94
F2544H-12P-LA	27.94	30.48
F2544H-14P-LA	33.02	35.56

Allconnectors

www.allconnectors.eu | info@allconnectors.eu
 Tel: +49 (0)711 358 110 20 | Fax: +49 (0)711 358 110 25

UNIT: mm
 SCALE: 1 of 1
 SHEET: 1 of 1

DRAWN BY: 蕭惠風
 APPROVED BY: 謝瑞清
 2004.03.16

GENERAL TOLERANCE: X.XX±0.15
 ANGLE±: X.XXX±0.05

TITLE:
 2.54mm PITCH
 HOUSING WITH LOCK,
 FFC CONNECTOR, A TYPE

DRAW NO.: F2544H-XP-LA
 REV. B2

REV.	DESCRIPTION	DATE	GENERAL TOLERANCE	ANGLE±
B2	EN0911050541	2009.11.05	X.XX±0.25	ANGLE±
B1	REVISE	2007.11.30	X.XX±0.15	
B0	NEW RELEASE	2005.12.05	X.XXX±0.05	