

RoHS compliant

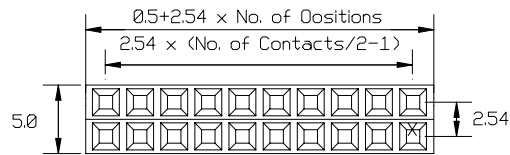
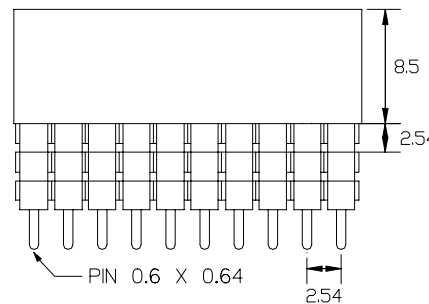
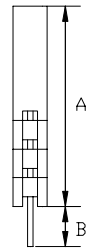
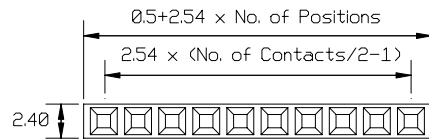
SPECIFICATION

Current Rating: 3 Amp
 Insulation Resistance: 5000 Megohms min
 Contact Resistance: 20 m ohms Max
 Dielectric Withstanding: AC 500 V
 Operating Temperature: -65 ° C to +125° C
 Contact Material: Brass
 Insulator Material: High Temperature Plastic
 UL94V-0

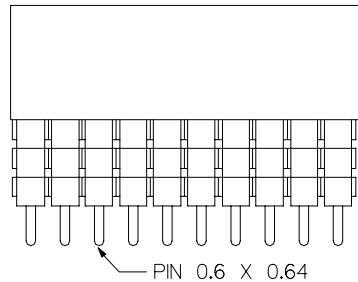
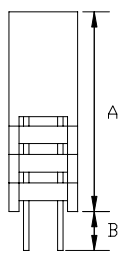
Ordering Code:


EFD12- X - X - X - X - X
 ① ② ③ ④ ⑤ ⑥

- ① Series No:
- ② No. of Contact
A: 03 TO 40
B: 04 TO 80
- ③ Connector Type
A: Single Row
B: Dual Row
- ④ Contact Plating
A: Gold Flash
E: 3u" Gold
B: 10u" Gold
C: 15u" Gold
D: 30u" Gold
- ⑤ Code Packing
B: Tray
- ⑥ Lead Style
From Chart



Lead Style	A	B
C1	11.05	2.50
D1	11.05	7.35
D2	13.59	4.85
D3	16.13	2.30
F1	11.05	12.2
F2	13.59	9.65
F3	16.13	7.10
F4	18.67	4.60



UNLESS OTHERWISE SPECIFIED TOLERANCE		 <small>www.allconnectors.eu info@allconnectors.eu Tel. +49 (0)711 / 358 110 20 Fax +49 (0)711 / 358 110 25</small>
ANG. 0. 0 ±0.25 .00 ±0.2		
SCALE: AS SHOWN	UNIT: mm	TITLE: 254mm Elevated Socket
DRAWN		
CHECKED		
APPROVED		DRAWN NO: EFD12-XXXXX-1
REV	DESCRIPTION	PRODUCT NO. EFD12-XXXXX