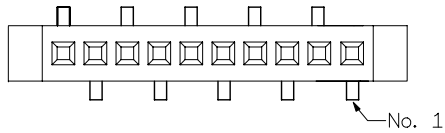
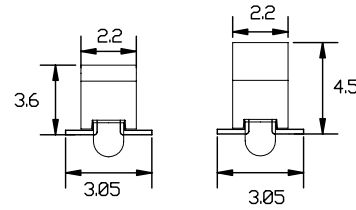
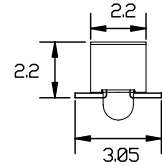
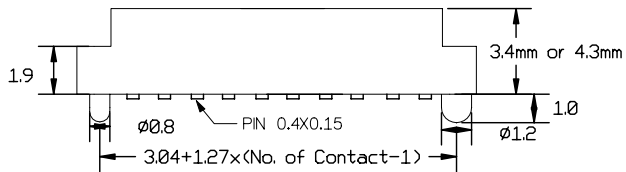
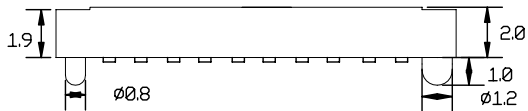
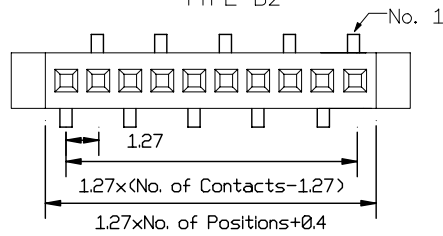


RoHS compliant

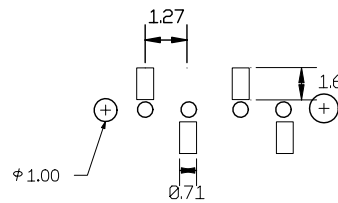
TYPE B1



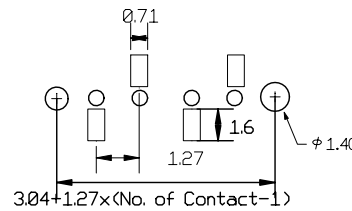
TYPE B2



TYPE B1



TYPE B2



Recommended P.C.Board
SMD Layout

SPECIFICATION

Current Rating: 1 Amp
 Insulation Resistance: 5000 Megohms min
 Contact Resistance: 20 m ohms Max
 Dielectric Withstanding: AC 500 V
 Operating Temperature: -65 ° C to +125° C
 Contact Material: Phosphor Bronze
 Insulator Material: Black Liquid Crystal Polymer

Processing

Max Processing Temp: 260 ° C for 6 seconds
 SMT Lead Coplanarity: (0.10mm)>0.04"max (04-40)

Ordering Code:

CFS09- X - X - X - X - X
 ① ② ③ ④ ⑤ ⑥

- | | |
|--|-------------------|
| ① Series No: | ⑤ Contact Plating |
| ② No. of Contact
04 TO 40 | A: Gold Flash |
| ③ Contact Type
B1: Type B1
B2: Type B2 | B: 10u" Gold |
| ④ Special Function
A: Profile:2.2mm
B: Profile:3.6mm
C: Profile:4.5mm | C: 15u" Gold |
| | D: 30u" Gold |
| | E: 3u" Gold |
| | ⑥ Code Packing |
| | A: Tube |
| | B: Pad+Tube |
| | C: Pad+T&R |

UNLESS OTHERWISE
SPECIFIED TOLERANCE

ANG.
0.
0 ±0.25
00 ±0.2

SCALE: AS SHOWN UNIT: mm

Allconnectors

www.allconnectors.eu | info@allconnectors.eu
Tel: +49 (0)711 / 358 110 20 | Fax: +49 (0)711 / 358 110 25

DRAWN
CHECKED
APPROVED

TITLE:
1.27mm Female Header SMT Type,with peg
Single Row, Profile: 2.0mm , 3.6mm , 4.5mm
DRAWN NO: CFS09-XXXX-1

REV DESCRIPTION DATE

PRODUCT NO. CFS09-XXXX